

# CROOKED CREEK ANGUS REDUCTION SALE

WEDNESDAY DECEMBER 1, 2010

VOLD, JONES & VOLD AUCTION CO. LTD. PONOKA, AB AT 1:00 PM

**OFFERING:**

**84 BRED FEMALES • 2 CANADIAN GENETICS SEMEN LOTS**



**CROOKED CREEK ANGUS  
RICK, SHARON, NICOLE, MATHILDA  
& VALENTINA GABERT  
FORT SASKATCHEWAN, AB  
HOME: (780) 998-1963  
CELL: (587) 784-7859**

Welcome to our herd reduction Sale. We are having this sale to help Rick & me to get the numbers down to where we can manage them with out the a lot extra help of our girls. As they are all grown up and last one going college and the other 2 are working. Some of these will be from the girls past 4-H and our show projects, one we have shown over the past few years.

If you would like more info please talk to Sharon or one of the girls. We hope to see you Dec 1. Please feel free to contact us or any of our capable sales representatives to discuss your needs or questions. Pre-Sale Viewing of the Cattle is encouraged.

**SALE DAY PHONES: Rob: 780-916-2628 • Bob: 306-834-7385  
AUCTION MART: 403-783-5561**

# Black Angus Females

## CROOKED CREEK JUMBO 26K

1

KFB 26K MARCH 08 1978 #520561

JUMBO ERIC OF A L F 29Y

S: BOTHALTA JUMBO 28F

BOTHALTA ALPHA QUEEN 16C

CORALTA CHALLENGER 43'71

D: CORALTA LASSIE 46'73

BLACKBIRD LASSIE CORALTA 36V

LOT 1A - 10 STRAWS • LOT 1B - 10 STRAWS

Some unique Canadian Genetics here to obtain through this very special sale. Jumbo 26K was a bull used by Corvallis Angus Farms as their Main Herdsire in the Early 80's. He is a straight Canadian Bull with alot of value nowadays with everyone looking for NEW GENETICS. **FOBALTA GENETICS.**

	WTs	EPDs
BW	-	+0.2
WW	-	+4
YW	-	+8
MILK	-	+8
TM		+10

## C CRK JESTRESS 18W

3

KFB 18W JANUARY 20 2009 #1508684

TC FREEDOM 104 NHF AMF

S: VTG FREEDOM 34S

FISHER DIXIE ERICA 3P

BON VIEW NEW DESIGN 878 NHF AMF CAF

D: CROOKED CREEK JESTRESS 88M

CROOKED CREEK JESTRESS 36K

	WTs	EPDs
BW	79	+2.6
WW	-	+42
YW	-	+91
MILK	-	+26
TM		-

A.I. TO LLB GRIDLOCK 293W ON APRIL 21. PE. TO CROOKED CREEK ICEMAN 1W FROM JUNE 17 TO JULY 18. DUE EARLY FEB.



C CRK DEWDROP 52W  
LOT 4

## C CRK LASS 63W

5

KFB 63W FEBRUARY 09 2009 #1508704

HERO 6267 OF R R 2418

S: H A IMAGE MAKER 0415 NHF AMF CAF

H A RITO BLACKCAP 9038

CROOKED CREEK CLASS 5N

D: CROOKED CREEK LASS 102R

CROOKED CREEK LASS 41N

	WTs	EPDs
BW	66	+0.7
WW	-	+49
YW	-	+91
MILK	-	+26
TM		-

P.E. TO CROOKED CREEK ICEMAN 1W FROM MAY 10 TO JULY 30. DUE END OF MARCH.

## C CRK MS MORRISON 75W

7

KFB 75W FEBRUARY 14 2009 #1508709

TC FREEDOM 104 NHF AMF

S: VTG FREEDOM 34S

FISHER DIXIE ERICA 3P

K C F BENNET COALITION SCC NHF AMF CAF

D: CROOKED CRK MS MORRISON 9S

CROOKED CREEK MS MORRISON 21G

	WTs	EPDs
BW	73	+2.2
WW	-	+38
YW	-	+86
MILK	-	+25
TM		-

A.I. ON MAY 6 TO SAF CONNECTION. DUE MID FEB.

## C CRK DEWDROP 2W

2

KFB 2W JULY 07 2009 #1588269

NJA ELIXIR 37N

S: NJA ELIXIR 168S

CROOKED CREEK DEWDROP 26G

K C F BENNET COALITION SCC NHF AMF CAF

D: CROOKED CREEK DEWDROP 39S

CROOKED CREEK DEWDROP 43N

	WTs	EPDs
BW	70	+0.5
WW	-	+37
YW	-	+77
MILK	-	+15
TM		-

P.E. TO CROOKED CREEK ICEMAN 1W FROM APRIL 10 TO JULY 30. DUE END OF MARCH.



C CRK JESTRESS 18W  
LOT 3

## C CRK DEWDROP 52W

4

KFB 52W FEBRUARY 05 2009 #1508747

SITZ TRAVELER 8180 NHF AMF CAF

S: S A V FINAL ANSWER 0035 NHF AMF CAF

S A V EMULOUS 8145

KMK ALLIANCE 6595 I87 NHF AMF CAF

D: NJA DEWDROP 6T

NJA DEWDROP 30N

	WTs	EPDs
BW	56	-1.7
WW	-	+50
YW	-	+95
MILK	-	+19
TM		-

P.E. TO CROOKED CREEK ICEMAN 1W FROM APRIL 10 TO JULY 30. DUE LATE JAN.

## C CRK BARB ROSE 72W

6

KFB 72W FEBRUARY 13 2009 #114137

TC FREEDOM 104 AMF NHF

S: VTG FREEDOM 34S

FISHER DIXIE ERICA 3P

NJA UNIQUE 153R

D: CROOKED CREEK BARB ROSE 172T

CROOKED CRK BARB ROSE 48R

	WTs	EPDs
BW	75	-
WW	-	-
YW	-	-
MILK	-	-
TM		-

A.I. ON MAY 9 TO SAF CONNECTION. DUE MID FEB.



C CRK MS MORRISON 75W  
LOT 7

**C CRK LUCY 83W**

KFB 83W FEBRUARY 12 2009 #1508706

S A V 8180 TRAVELER 004 NHF AMF CAF  
 S: LT CURVE BENDER 4810 OF EA NHF AMF CAF  
 SAV BLACKCLASS 203 EA

WOODHILL FORESIGHT NHF AMF CAF  
 D: CROOKED CREEK LUCY 7P  
 CROOKED CREEK LUCY 40G

A.I. ON MAY 19 TO SAF CONNECTION. DUE MID FEB.

	WTs	EPDs
BW	83	+4.1
WW	-	+54
YW	-	+96
MILK	-	+20
TM		-

**8**C CRK LUCY 83W  
LOT 8**C CRK BARBARA ROSE 86W**

KFB 86W FEBRUARY 25 2009 #1508716

S A V 8180 TRAVELER 004 NHF AMF CAF  
 S: LT CURVE BENDER 4810 OF EA NHF AMF CAF  
 SAV BLACKCLASS 203 EA

CONNELLY FRONTLINE NHF AMF CAF  
 D: CROOKED CREEK BARBARA ROSE 34K  
 CROOKED CREEK BARBARA ROSE 6F

A.I. TO LLB GRIDLOCK 293W ON APRIL 25. PE. TO CROOKED CREEK ICEMAN 1W FROM JUNE 17 TO JULY 18. DUE EARLY FEB.

	WTs	EPDs
BW	86	+3.9
WW	-	+52
YW	-	+94
MILK	-	+19
TM		-

**9****MMG DEWDROP 91W**

MMG 91W MARCH 05 2009 #1507004

S A V 8180 TRAVELER 004 NHF AMF CAF  
 S: LT CURVE BENDER 4810 OF EA NHF AMF CAF  
 SAV BLACKCLASS 203 EA

MINERTS FORTUNE 2000 NHF AMF CAF  
 D: MMG DEWDROP 84K  
 CROOKED CREEK DEWDROP 53E

A.I. ON APRIL 26 TO SAV BISMARK 5682. DUE EARLY FEB.

	WTs	EPDs
BW	80	+3.8
WW	-	+52
YW	-	+100
MILK	-	+18
TM		-

**11****C CRK MS MORRISON 92W**

KFB 92W MARCH 06 2009 #1508777

TC FREEDOM 104 NHF AMF  
 S: VTG FREEDOM 34S  
 FISHER DIXIE ERICA 3P

CROOKED CREEK FREEDOM 82R  
 D: C CRK MS MORRISON 130T  
 CROOKED CREEK MS MORRISON 23H

P.E. TO CROOKED CREEK ICEMAN 1W FROM APRIL 10 TO JULY 30. DUE MID MARCH.

	WTs	EPDs
BW	73	+3.8
WW	-	+45
YW	-	+87
MILK	-	+21
TM		-

**12**

C CRK MS MORRISON 92W - LOT 12

**C CRK DEWDROP 103W**

KFB 103W FEBRUARY 24 2009 #1508762

LT CURVE BENDER 4810 OF EA NHF AMF CAF  
 S: VTG BENDER 121T  
 FISHER DIXIE ERICA 3P

HOFF TRIUMPH S C 927 NHF AMF CAF  
 D: CROOKED CREEK DEWDROP 24G  
 CROOKED CREEK DEWDROP 64E

A.I. ON MAY 1 TO SAF CONNECTION. A.I. ON MAY 21 TO VTG FREEDOM 34S. DUE LATE FEB.

	WTs	EPDs
BW	65	-0.2
WW	-	+49
YW	-	+96
MILK	-	+14
TM		-

**13****MMG ECHO'S MIA 107W**

MMG 107W MARCH 28 2009 #1527090

NJA ELIXIR 37N  
 S: NJA ELIXIR 168S  
 CROOKED CREEK DEWDROP 26G

W C C SPECIAL DESIGN L309 NHF AMF CAF  
 D: MMG ECHO MIA 26R  
 HFDF ECHO 11N

A.I. TO VTG FREEDOM 34S ON MAY 1. DUE MID FEB.

	WTs	EPDs
BW	72	+1.0
WW	-	+24
YW	-	+53
MILK	-	+10
TM		-

**14**

**MMG MIA ECHO 111W**

MMG 111W MARCH 03 2009 #1507002

TC FREEDOM 104 NHF AMF  
**S: CROOKED CREEK FREEDOM 82R**  
 CROOKED CREEK DEWDROP 7L

S A F DIRECTIVE NHF AMF CAF  
**D: MMG ECHO MIA 58T**  
 MMG ECHO MIA 26R

**P.E. TO CROOKED CREEK ICEMAN 1W FROM APRIL 10 TO JULY 30. DUE MID MARCH.**

**15**

	WTs	EPDs
<b>BW</b>	79	+4.5
<b>WW</b>	-	+60
<b>YW</b>	-	+101
<b>MILK</b>	-	+21
<b>TM</b>		-

**NJA FAVORITE 128W**

NJ A 128W APRIL 10 2009 #1507020

TC FREEDOM 104 NHF AMF  
**S: CROOKED CREEK FREEDOM 82R**  
 CROOKED CREEK DEWDROP 7L

NJA TRIUMPH 9H  
**D: NJA FAVORITE 100N**  
 NJA FAVORITE 60H

**P.E. TO CROOKED CREEK ICEMAN 1W FROM APRIL 10 TO JULY 30. DUE MID MARCH.**

**17**

	WTs	EPDs
<b>BW</b>	79	+2.5
<b>WW</b>	-	+42
<b>YW</b>	-	+68
<b>MILK</b>	-	+6
<b>TM</b>		-

**MMG DEWDROP 140W**

MMG 140W APRIL 16 2009 #1507007

TC FREEDOM 104 NHF AMF  
**S: CROOKED CREEK FREEDOM 82R**  
 CROOKED CREEK DEWDROP 7L

TC FREEDOM 104 NHF AMF  
**D: MMG DEWDROP 86R**  
 MMG DEWDROP 6L

**P.E. TO CROOKED CREEK ICEMAN 1W FROM APRIL 10 TO JULY 30. DUE MAY.**

**19**

	WTs	EPDs
<b>BW</b>	76	+2.8
<b>WW</b>	-	+53
<b>YW</b>	-	+99
<b>MILK</b>	-	+20
<b>TM</b>		-

**C CRK FAVORITE 158W**

KFB 158W MAY 05 2009 #1521825

TC FREEDOM 104 NHF AMF  
**S: NJA FREEDOM 65S**  
 NJA DEWDROP 92L

CROOKED CREEK KAHN 1P NHF  
**D: NJA FAVORITE 121S**  
 NJA DEWDROP 86N

**P.E. TO CROOKED CREEK ICEMAN 1W FROM APRIL 10 TO AUG 30. DUE MID MAY.**

**21**

	WTs	EPDs
<b>BW</b>	75	+3.0
<b>WW</b>	-	+38
<b>YW</b>	-	+76
<b>MILK</b>	-	+14
<b>TM</b>		-

**NJA LADY 9U**

NJ A 9U JANUARY 17 2008 #1427938

TC FREEDOM 104 NHF AMF  
**S: CROOKED CREEK FREEDOM 56R**  
 CROOKED CREEK MS MORRISON 21G

NJA TRIUMPH 9H  
**D: CROOKED CREEK LADY 12K**  
 BLACKSTONE LADY 28F

**A.I. TO CONNEALY STIMULUS 8419 ON MAY 9. DUE EARLY FEB.**

**22**

	WTs	EPDs
<b>BW</b>	85	+1.6
<b>WW</b>	610	+45
<b>YW</b>	807	+74
<b>MILK</b>	-	+12
<b>TM</b>		+35

**C CRK MS MORRISON 118W**

KFB 118W APRIL 04 2009 #1544090

NJA ELIXIR 37N  
**S: NJA ELIXIR 168S**  
 CROOKED CREEK DEWDROP 26G

LCC BIG RIVER 3499J  
**D: CROOKED CRK MS MORRISON 95S**  
 CROOKED CREEK MS MORRISON 66H

**A.I. ON MAY 6 TO SAF CONNECTION. A.I. P.E. FROM MAY 31 TO JULY 30 TO VTG FREEDOM 34S. DUE EARLY MARCH.**

**16**

	WTs	EPDs
<b>BW</b>	77	+2.6
<b>WW</b>	-	+16
<b>YW</b>	-	+29
<b>MILK</b>	-	+11
<b>TM</b>		-

**C CRK DEWDROP 131W**

KFB 131W APRIL 12 2009 #1508755

TC FREEDOM 104 NHF AMF  
**S: CROOKED CREEK FREEDOM 56R**  
 CROOKED CREEK MS MORRISON 21G

LT CURVE BENDER 4810 OF EA NHF AMF CAF  
**D: NJA DEWDROP 62T**  
 NJA DEWDROP 18R

**P.E. TO CROOKED CREEK ICEMAN 1W FROM MAY 10 TO SEPT 30. DUE JUNE.**

**18**

	WTs	EPDs
<b>BW</b>	71	+3.3
<b>WW</b>	-	+49
<b>YW</b>	-	+90
<b>MILK</b>	-	+19
<b>TM</b>		-

**C CRK DEWDROP 146W**

KFB 146W APRIL 22 2009 #1517470

TC FREEDOM 104 NHF AMF  
**S: CROOKED CREEK FREEDOM 82R**  
 CROOKED CREEK DEWDROP 7L

NJA ELIXIR 37N  
**D: NJA DEWDROP 159T**  
 NJA DEWDROP 21H

**A.I. ON APRIL 30 TO SAF CONNECTION. DUE EARLY FEB.**

**20**

	WTs	EPDs
<b>BW</b>	74	+3.9
<b>WW</b>	-	+53
<b>YW</b>	-	+91
<b>MILK</b>	-	+15
<b>TM</b>		-



C CRK DEWDROP 146W  
 LOT 20

**CRKED CRK BLACKBIRD 12U**

KFB 12U JANUARY 18 2008 #1446239

S A V 8180 TRAVELER 004 NHF AMF CAF  
**S: LT CURVE BENDER 4810 OF EA NHF AMF CAF**  
 SAV BLACKCLASS 203 EA

SITZ TRAVELER 8180 NHF AMF CAF  
**D: CROOKED CREEK BLACKBIRD 17H**  
 CROOKED CREEK BLACKBIRD 36D

**A.I. TO VTG FREEDOM 34S ON MAY 6 & MAY 29. DUE EARLY MARCH.**

**23**

	WTs	EPDs
<b>BW</b>	80	+2.9
<b>WW</b>	548	+44
<b>YW</b>	763	+85
<b>MILK</b>	-	+16
<b>TM</b>		+38

**CRKED CRK MS MORRISON 13U****24**

KFB 13U JANUARY 19 2008 #1449408

S A F FOCUS OF E R NHF AMF CAF  
 S: MYTTY IN FOCUS NHF AMF CAF  
 MYTTY COUNTESS 906

K C F BENNET COALITION SCC NHF AMF CAF  
 D: CROOKED CRK MS MORRISON 9S  
 CROOKED CREEK MS MORRISON 21G

	WTs	EPDs
BW	70	+0.6
WW	530	+42
YW	752	+81
MILK	-	+23
TM		+44

A.I. TO MMG FREEDOM 38S ON MAY 8. DUE EARLY FEB.

**CRKED CRK DEWDROP 20U****25**

KFB 20U JANUARY 25 2008 #1449411

S A V 8180 TRAVELER 004 NHF AMF CAF  
 S: LT CURVE BENDER 4810 OF EA NHF AMF CAF  
 SAV BLACKLASS 203 EA

NJA BATTLE 13M  
 D: CROOKED CREEK DEWDROP 103P  
 CROOKED CREEK DEWDROP 83J

	WTs	EPDs
BW	88	+3.3
WW	556	+54
YW	809	+102
MILK	-	+18
TM		+45

A.I. TO LLB GRIDLOCK 293W ON MAY 25. DUE EARLY MARCH.

**CRKED CRK DEWDROP 29U****26**

KFB 29U JANUARY 27 2008 #1449412

S A F 598 BANDO 5175 AMF CAC  
 S: BOYD ON TARGET 1083 NHF AMF CAF  
 BOYD FOREVER LADY 7095

WOODHILL FORESIGHT NHF AMF CAF  
 D: CROOKED CREEK DEWDROP 50P  
 CROOKED CREEK DEWDROP 22H

	WTs	EPDs
BW	77	+3.7
WW	531	+50
YW	758	+94
MILK	-	+19
TM		+44

A.I. TO MMG TARGET 4U ON APRIL 22. DUE LATE JAN.

**CRKED CRK BLACKBIRD 32U****27**

KFB 32U JANUARY 28 2008 #1454493

SITZ ALLIANCE 6595 NHF AMF  
 S: KMK ALLIANCE 6595 187 NHF AMF CAF  
 G A R EXT 916 AMF

CROOKED CREEK FRONTLINE 49K  
 D: CROOKED CREEK BLACKBIRD 46N  
 CROOKED CREEK BLACKBIRD 17H

	WTs	EPDs
BW	79	+1.8
WW	576	+49
YW	734	+82
MILK	-	+17
TM		+42

P.E. TO VTG INITIATIVE 3W FROM APRIL 10 TO JULY 30. DUE MID APRIL.

**MMG ECHO MIA 53U****28**

MMG 53U FEBRUARY 04 2008 #1432398

S A F 598 BANDO 5175 AMF CAC  
 S: BOYD ON TARGET 1083 NHF AMF CAC  
 BOYD FOREVER LADY 7095

W C C SPECIAL DESIGN L309 NHF AMF CAF  
 D: MMG ECHO MIA 26R  
 HFDF ECHO 11N

	WTs	EPDs
BW	74	+3.2
WW	423	+43
YW	603	+92
MILK	-	+21
TM		+43

P.E. TO VTG YOUNG BENDER 1W FROM APRIL 10 TO JULY 30. DUE EARLY APRIL.



CRKED CRK MS MORRISON 13U - LOT 24



CRKED CRK BLACKBIRD 32U - LOT 27



MMG ECHO MIA 53U - LOT 28



C CRK MS MORRISON 64U  
LOT 29

## C CRK MS MORRISON 64U

KFB 64U FEBRUARY 10 2008 #1461893

29

TC FREEDOM 104 NHF AMF  
S: VTG FREEDOM 34S  
FISHER DIXIE ERICA 3P

CROOKED CREEK KESS MAN 11D  
D: CROOKED CREEK MS MORRISON 66H  
PROSPECT MISS MORRISON 21S

	WTs	EPDs
BW	76	+2.1
WW	501	+31
YW	677	+68
MILK	-	+20
TM		+36

A.I. TO CROOKED CRK FREEDOM 100U ON APRIL 30. DUE EARLY FEB.

## NJA DEWDROP 66U

NJA 66U FEBRUARY 13 2008 #1446231

30

S A F 598 BANDO 5175 AMF CAC  
S: BOYD ON TARGET 1083 NHF AMF CAC  
BOYD FOREVER LADY 7095

BON VIEW NEW DESIGN 1407 NHF AMF CAF  
D: NJA DEWDROP 18M  
NJA DEWDROP 8D

	WTs	EPDs
BW	76	+1.8
WW	508	+43
YW	846	+94
MILK	-	+21
TM		+43

A.I. TO C CRK FREEDOM 39W APRIL 30. DUE MID FEB.



NJA DEWDROP 66U  
LOT 30

## NJA DEWDROP 78U

NJA 78U FEBRUARY 19 2008 #1446233

31

S A F 598 BANDO 5175 AMF CAC  
S: BOYD ON TARGET 1083 NHF AMF CAC  
BOYD FOREVER LADY 7095

KING KAHN B100 NHC AMF CAF  
D: NJA DEWDROP 27R NHF  
NJA DEWDROP 12F

	WTs	EPDs
BW	78	+2.7
WW	540	+47
YW	723	+91
MILK	-	+17
TM		+41

P.E. TO VTG INITIATIVE 3W FROM APRIL 10 TO JULY 30. DUE LATE MARCH.

## CRKED CRK DEWDROP 97U

KFB 97U JUNE 03 2008 #1520498

32

TC FREEDOM 104 NHF AMF  
S: VTG FREEDOM 34S  
FISHER DIXIE ERICA 3P

CROOKED CREEK KAHN 1P NHF  
D: CROOKED CRK DEWDROP 148S  
CROOKED CREEK DEWDROP 118P

	WTs	EPDs
BW	75	+4.4
WW	-	+48
YW	-	+96
MILK	-	+22
TM		+46

A.I. ON APRIL 19 TO MMG BENDER 80T. DUE LATE FEB.

## NJA DEWDROP 105U

NJA 105U MARCH 12 2008 #1461890

33

TC FREEDOM 104 NHF AMF  
S: VTG FREEDOM 34S  
FISHER DIXIE ERICA 3P

KMK ALLIANCE 6595 187 NHF AMF CAF  
D: NJA DEWDROP 68R  
NJA DEWDROP 42H

	WTs	EPDs
BW	75	+2.8
WW	534	+47
YW	808	+95
MILK	-	+16
TM		+40

A.I. ON MAY 9 TO CONNEALY STIMULUS 8419. DUE MID FEB.

## NJA FAVORITE 106U

NJA 106U MARCH 12 2008 #1461891

34

TC FREEDOM 104 NHF AMF  
S: VTG FREEDOM 34S  
FISHER DIXIE ERICA 3P

S A F CONNECTION NHF AMF CAF  
D: NJA FAVORITE 103S  
NJA FAVORITE 100N

	WTs	EPDs
BW	77	+3.4
WW	534	+43
YW	854	+93
MILK	-	+19
TM		+41

A.I. TO MMG FREEDOM 38S ON MAY 13. DUE LATE FEB.

## CRKED CRK LUCY 113U

KFB 113U MARCH 25 2008 #1461895

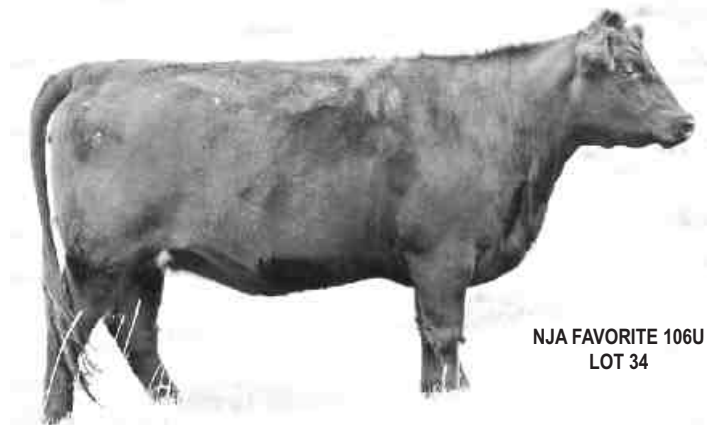
35

TC FREEDOM 104 NHF AMF  
S: VTG FREEDOM 34S  
FISHER DIXIE ERICA 3P

WOODHILL FORESIGHT NHF AMF CAF  
D: CROOKED CREEK LUCY 7P  
CROOKED CREEK LUCY 40G

	WTs	EPDs
BW	77	+3.0
WW	624	+52
YW	788	+97
MILK	-	+22
TM		+48

A.I. ON APRIL 12 TO SAV NET WORTH 4200. DUE MID JAN.



NJA FAVORITE 106U  
LOT 34

**VTG LADY BATE 113U**

VTG 115U MARCH 29 2008 #1446220

CROOKED CREEK IMPROVE 57L  
**S: NJA IMPROVE 118N**  
 CROOKED CREEK FAVORITE 65K

SITZ ALLIANCE 6595 NHF AMF  
**D: VTG LADY BATE 11P**  
 VTG LADY BATE 57K

**P.E. TO VTG YOUNG BENDER 1W FROM APRIL 10 TO JULY 30.  
 DUE LATE MARCH.**

	WTs	EPDs
<b>BW</b>	78	+3.5
<b>WW</b>	495	+46
<b>YW</b>	699	+90
<b>MILK</b>	-	+15
<b>TM</b>		+38

**36****NJA DEWDROP 118U**

NJA 118U APRIL 01 2008 #1461867

SITZ TRADITION RLS 8702  
**S: CROOKED CRK TRADITION 60S**  
 CROOKED CREEK QUEEN MOM 84M

SUMMITCREST HI FLYER 3B18 NHF AMF CAF  
**D: NJA DEWDROP 6S**  
 NJA DEWDROP 54P

**A.I. TO VTG FREEDOM 34S ON MAY 1. DUE MID FEB.**

	WTs	EPDs
<b>BW</b>	74	+2.0
<b>WW</b>	632	+48
<b>YW</b>	738	+74
<b>MILK</b>	-	+20
<b>TM</b>		+44

**37****NJA DEWDROP 123U**

NJA 123U APRIL 04 2008 #1446236

TC FREEDOM 104 NHF AMF  
**S: CROOKED CREEK FREEDOM 56R**  
 CROOKED CREEK MS MORRISON 21G

HOFF TRIUMPH S C 927 NHF AMF CAF  
**D: NJA DEWDROP 21H**  
 NJA DEWDROP 12F

**A.I. TO VTG FREEDOM 34S ON JUNE 4. P.E. TO C CRK 116W FROM JULY 1 TO  
 OCT 17. DUE MID MARCH.**

	WTs	EPDs
<b>BW</b>	73	+1.6
<b>WW</b>	482	+40
<b>YW</b>	746	+82
<b>MILK</b>	-	+17
<b>TM</b>		+37

**38****NJA FAVORITE 121U**

NJA 121U APRIL 06 2008 #1461869

SITZ TRADITION RLS 8702  
**S: CROOKED CRK TRADITION 60S**  
 CROOKED CREEK QUEEN MOM 84M

CROOKED CREEK KAHN 1P NHF  
**D: NJA FAVORITE 121S**  
 NJA DEWDROP 86N

**P.E. TO MMG FREE SPIRIT 16W FROM APRIL 10 TO JULY 30.  
 DUE LATE MARCH.**

	WTs	EPDs
<b>BW</b>	75	+4.5
<b>WW</b>	-	+38
<b>YW</b>	-	+68
<b>MILK</b>	-	+13
<b>TM</b>		+32

**39****CRKED CRK BARB ROSE 130U**

KFB 130U APRIL 12 2008 #1446245

ANKONIAN ELIXIR 100  
**S: NJA ELIXIR 37N**  
 NJA DEWDROP 12F

BON VIEW NEW DESIGN 878 NHF AMF CAF  
**D: CROOKED CK BARBARA ROSE 102M**  
 CROOKED CREEK BARBARA ROSE 22K

**P.E. TO VTG YOUNG BENDER 1W FROM APRIL 10 TO JULY 30.  
 DUE MID MARCH.**

	WTs	EPDs
<b>BW</b>	77	+1.6
<b>WW</b>	624	+52
<b>YW</b>	686	+87
<b>MILK</b>	-	+19
<b>TM</b>		+45

**40****CROOKED CRK MS MORRISON 3T**

KFB 3T JANUARY 19 2007 #1413682

BON VIEW NEW DESIGN 878 NHF AMF CAF  
**S: W C C SPECIAL DESIGN L309 NHF AMF CAF**  
 N BAR PRIMROSE 2424

LEACHMAN EXPLORER NHF AMF CAF  
**D: CROOKED CREEK MS MORRISON 110M**  
 CROOKED CREEK MISS MORRISON 39

**A.I. TO MMG FREEDOM 38S ON JUNE 5. DUE MID MARCH.**

	WTs	EPDs
<b>BW</b>	65	+0.8
<b>WW</b>	644	+59
<b>YW</b>	-	+93
<b>MILK</b>	-	+20
<b>TM</b>		+50

**41****NJA DEWDROP 6T**

NJA 6T JANUARY 21 2007 #1401495

SITZ ALLIANCE 6595 NHF AMF  
**S: KMK ALLIANCE 6595 187 NHF AMF CAF**  
 G A R EXT 916 AMF

S A F CONNECTION NHF AMF CAF  
**D: NJA DEWDROP 30N**  
 NJA DEWDROP 92L

**A.I. TO VTG FREEDOM 34S ON MAY 5. P.E. TO VTG YOUNG BENDER 1W.  
 DUE LATE MARCH.**

	WTs	EPDs
<b>BW</b>	75	+1.5
<b>WW</b>	492	+47
<b>YW</b>	-	+85
<b>MILK</b>	-	+17
<b>TM</b>		+41

**42****CROOKED CREEK LUCY 12T**

KFB 12T JANUARY 22 2007 #1404105

SITZ ALLIANCE 6595 NHF AMF  
**S: K C F BENNET COALITION SCC NHF AMF CAF**  
 PLEASANT PILL OF CONANGA

NJA BATTLE 13M  
**D: CROOKED CREEK LUCY 10R**  
 CROOKED CREEK LUCY 67B

**A.I. TO LLB GRIDLOCK 293W ON APRIL 24. DUE MID FEB.**

	WTs	EPDs
<b>BW</b>	73	+2.5
<b>WW</b>	474	+38
<b>YW</b>	-	+68
<b>MILK</b>	-	+18
<b>TM</b>		+37

**43**

NJA DEWDROP 6T - LOT 42

**VTG LADY BATE 16T**

VTG 16T JANUARY 23 2007 #1387034

BON VIEW NEW DESIGN 878 NHF AMF CAF  
 S: W C C SPECIAL DESIGN L309 NHF AMF CAF  
 N BAR PRIMROSE 2424

S A F CONNECTION NHF AMF CAF  
 D: VTG LADY BATE 3P  
 VTG LADY BATE 64M

A.I. TO VTG FREEDOM 34S ON APRIL 24. DUE EARLY FEB.

**44**

	WTs	EPDs
BW	79	+3.4
WW	539	+53
YW	-	+96
MILK	-	+21
TM		+48

**CROOKED CRK MS MORRISON 51T**

KFB 51T FEBRUARY 03 2007 #1404557

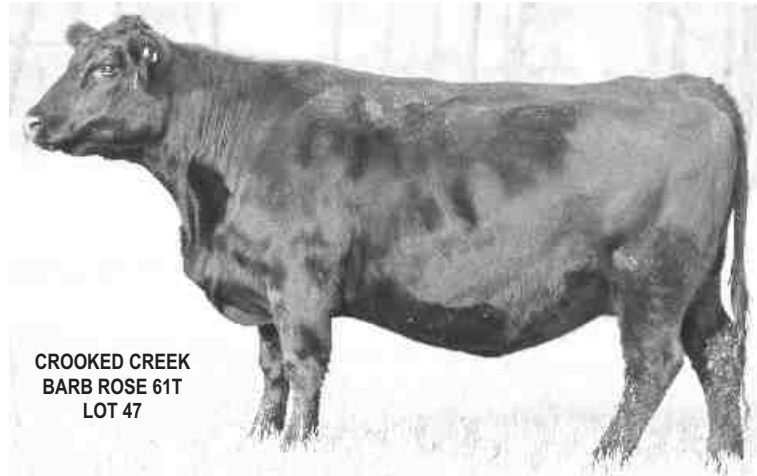
S A F 598 BANDO 5175 AMF CAC  
 S: S A V 5175 BANDO 4597 NHF AMF CAC  
 CHAMPION HILL BLOSSOM 1611 NHC AMF

SUMMITCREST HI FLYER 3B18 NHF AMF CAF  
 D: CROOKED CREEK MS MORRISON 18L  
 CROOKED CREEK MS MORRISON 64J

P.E. TO VTG INITIATIVE 3W FROM APRIL 10 TO JULY 30. DUE LATE MARCH.

**46**

	WTs	EPDs
BW	74	+1.8
WW	480	+43
YW	-	+85
MILK	-	+24
TM		+46

CROOKED CREEK  
BARB ROSE 61T  
LOT 47**C CRK MS MORRISON 71T**

KFB 71T FEBRUARY 09 2007 #1404807

S A F 598 BANDO 5175 AMF CAC  
 S: S A V 5175 BANDO 4597 NHF AMF CAC  
 CHAMPION HILL BLOSSOM 1611 NHC AMF

HOFF TRIUMPH S C 927 NHF AMF CAF  
 D: CROOKED CREEK MS MORRISON 21G  
 CROOKED CREEK MISS MORRISON 52

A.I. TO MMG FREEDOM 38S ON JUNE 5. P.E. TO MMG FREE SPIRIT 116W.

**48**

	WTs	EPDs
BW	84	+3.1
WW	543	+43
YW	-	+80
MILK	-	+26
TM		+48

**CROOKED CREEK LUCY 91T**

KFB 91T FEBRUARY 17 2007 #1405263

MILLCREEK DIVERSITY NHF AMF CAF  
 S: S A F DIRECTIVE NHF AMF CAF  
 S A F ROYAL QUEEN 5084

TC FREEDOM 104 NHF AMF  
 D: CROOKED CREEK LUCY 21R  
 CROOKED CREEK LUCY 117M

P.E. TO VTG INITIATIVE 3W FROM APRIL 10 TO JULY 30. DUE LATE MARCH.

**50**

	WTs	EPDs
BW	78	+4.2
WW	484	+44
YW	-	+86
MILK	-	+25
TM		+47

**CROOKED CREEK DEWDROP 20T**

KFB 20T JANUARY 24 2007 #1404108

BON VIEW NEW DESIGN 878 NHF AMF CAF  
 S: W C C SPECIAL DESIGN L309 NHF AMF CAF  
 N BAR PRIMROSE 2424

ANKONIAN ELIXIR 100  
 D: CROOKED CREEK DEWDROP 34R  
 CROOKED CREEK DEWDROP 18K

P.E. TO LLB GRIDLCOK 293W FROM APRIL 10 TO JULY 30. DUE EARLY APRIL.

**45**

	WTs	EPDs
BW	82	+5.4
WW	514	+45
YW	-	+95
MILK	-	+22
TM		+45

CROOKED CREEK  
DEWDROP 20T  
LOT 45**CROOKED CREEK BARB ROSE 61T**

KFB 61T FEBRUARY 06 2007 #1404560

S A V 8180 TRAVELER 004 NHF AMF CAF  
 S: LT CURVE BENDER 4810 OF EA NHF AMF CAF  
 SAV BLACKCLASS 203 EA

BON VIEW NEW DESIGN 878 NHF AMF CAF  
 D: CROOKED CK BARBARA ROSE 102M  
 CROOKED CREEK BARBARA ROSE 22K

A.I. TO CONNEALY STIMULUS 8419 ON MAY 13. DUE MID FEB.

**47**

	WTs	EPDs
BW	74	+1.8
WW	566	+53
YW	-	+101
MILK	-	+23
TM		+50

**MMG FAVORITE 84T**

MMG 84T FEBRUARY 14 2007 #1404814

S A F 598 BANDO 5175 AMF CAC  
 S: BOYD ON TARGET 1083 NHF AMF CAC  
 BOYD FOREVER LADY 7095

F A R KRUGERRAND 410H NHF AMF CAF  
 D: ANGUS GLEN FAVORITE 2P  
 ANGUS GLEN FAVORITE 3L

A.I. ON APRIL 7 TO SAV NET WORTH 4200. DUE MID JAN.

**49**

	WTs	EPDs
BW	76	+3.0
WW	555	+50
YW	-	+97
MILK	-	+20
TM		+45

CROOKED CREEK  
LUCY 91T - LOT 50

**CROOKED CREEK****BARB ROSE 172T**

KFB 172T MAY 20 2007 #114133

NJA UNIQUE 85N

S: NJA UNIQUE 153R  
NJA DEWDROP 54N

S A F STRATEGY 9015 AMF NHF

D: CROOKED CRK BARB ROSE 48R  
CROOKED CRK BARB ROSE 74N

A.I. TO MMG FREEDOM 38S ON MAY 6. DUE MID FEB.

**NJA DEWDROP 43S**

NJA 43S JANUARY 30 2006 #1369476

SITZ ALLIANCE 6595 NHF AMF

S: KMK ALLIANCE 6595 I87 NHF AMF CAF  
G A R EXT 916 AMF

THREE TREES EVERREADY NHF AMF CAF

D: NJA DEWDROP 22M  
NJA DEWDROP 33GA.I. TO MMG FREEDOM 38S ON MAY 21. P.E. TO VTG YOUNG BENDER 1W.  
DUE EARLY MARCH.CROOKED CRK  
MS MORRISON 95S  
LOT 54**NJA FAVORITE 121S**

NJA 121S MARCH 07 2006 #1315121

KING KAHN B100 NHC AMF CAF

S: CROOKED CREEK KAHN 1P NHF  
CROOKED CREEK MS MORRISON 16K

CROOKED CREEK FRONTLINE 46K

D: NJA DEWDROP 86N  
NJA DEWDROP 8JA.I. TO MMG FREEDOM 38S ON JUNE 6. P.E. TO MMG FREE SPIRIT 116W.  
DUE EARLY MARCH.**CROOKED CRK DEWDROP 148S**

KFB 148S APRIL 03 2006 #1517456

KING KAHN B100 NHC AMF CAF

S: CROOKED CREEK KAHN 1P NHF  
CROOKED CREEK MS MORRISON 16K

WOODHILL FORESIGHT NHF AMF CAF

D: CROOKED CREEK DEWDROP 118P  
CROOKED CREEK DEWDROP 3HP.E. TO VTG YOUNG BENDER 1W FROM APRIL 10 TO JULY 30.  
DUE LATE APRIL.**51**

	WTs	EPDs
BW	78	+4.2
WW	484	+44
YW	-	+86
MILK	-	+25
TM		+47

**CROOKED CRK MS MORRISON 9S**

KFB 9S JANUARY 22 2006 #1312850

SITZ ALLIANCE 6595 NHF AMF

S: K C F BENNET COALITION SCC NHF AMF CAF  
PLEASANT PILL OF CONANGA

HOFF TRIUMPH S C 927 NHF AMF CAF

D: CROOKED CREEK MS MORRISON 21G  
CROOKED CREEK MISS MORRISON 52

A.I. ON APRIL 20 TO MMG TARGET 4U. DUE EARLY FEB.

NJA DEWDROP 43S  
LOT 53**52**

	WTs	EPDs
BW	80	+2.2
WW	462	+33
YW	-	+65
MILK	-	+22
TM		+39

**CROOKED CRK MS MORRISON 95S**

KFB 98S FEBRUARY 14 2006 #1525600

LEACHMAN SAUGAHATCHEE 3000C NHF AMF C

S: LCC BIG RIVER 3499J  
BON VIEW PRIDE 664

CROOKED CREEK KESS MAN 11D

D: CROOKED CREEK MS MORRISON 66H  
PROSPECT MISS MORRISON 21SP.E. TO VTG YOUNG BENDER 1W FROM APRIL 10 TO JULY 30.  
DUE LATE APRIL.**55**

	WTs	EPDs
BW	81	+4.4
WW	470	+40
YW	-	+76
MILK	-	+7
TM		+27

**56**

	WTs	EPDs
BW	85	+5.2
WW	580	+51
YW	-	+85
MILK	-	+15
TM		+41



CROOKED CRK DEWDROP 148S - LOT 56



VTG TIBBIE 2R  
LOT 57

## VTG TIBBIE 2R

VTG 2R JANUARY 12 2005 #1257533

HOFF HI FLYER S C 7134 NHF AMF CAF  
S: SUMMITCREST HI FLYER 3B18 NHF AMF CAF  
SUMMITCREST LASS 229Y

CIRCLE A 2000 PLUS AMF  
D: J D TIBBIE 106N  
J D TIBBIE 2

	WTs	EPDs
BW	92	+5.1
WW	634	+50
YW	1043	+90
MILK	-	+21
TM		+46

A.I. TO MMG FREEDOM 38S ON MAY 5. DUE MID FEB.

## CROOKED CREEK DEWDROP 72R

58

KFB 72R JANUARY 30 2005 #1294526

CONNEALY FOREFRONT NHF AMF CAF  
S: TC FREEDOM 104 NHF AMF  
T C RUBY 9095

EXAR SHOW ME THE MONEY  
D: CROOKED CREEK DEWDROP 14L  
CROOKED CREEK DEWDROP 18Z

	WTs	EPDs
BW	65	+0.3
WW	517	+44
YW	756	+74
MILK	-	+13
TM		+35

A.I. TO MMG FREEDOM 38S ON APRIL 19. DUE MID FEB.



CROOKED CREEK  
DEWDROP 72R  
LOT 58

## NJA DEWDROP 79R

59

NJA 79R FEBRUARY 03 2005 #1301977

O G L BATTLE CRY 427 128  
S: NJA BATTLE 13M  
NJA FAVORITE 27F

HOFF HEAD OF THE CLASS SC534  
D: NJA DEWDROP 27M  
NJA DEWDROP 12F

	WTs	EPDs
BW	84	+2.6
WW	579	+46
YW	866	+81
MILK	-	+23
TM		+46

A.I. TO VTG FREEDOM 34S ON JUNE 4. DUE MID MARCH.

## CROOKED CREEK LASS 124R

60

KFB 124R MARCH 15 2005 #1313784

ANKONIAN ELIXIR 100  
S: NJA ELIXIR 37N  
NJA DEWDROP 12F

WHITESTONE FLY TRAVELER NHF AMF CAF  
D: G FORCE LASS 45F  
G FORCE LASS 4T

	WTs	EPDs
BW	73	+1.0
WW	545	+37
YW	744	+71
MILK	-	+10
TM		+29

P.E. TO VTG YOUNG BENDER 1W FROM APRIL 10 TO JULY 30.  
DUE MID APRIL.

## CROOKED CREEK FAVORITE 135R

61

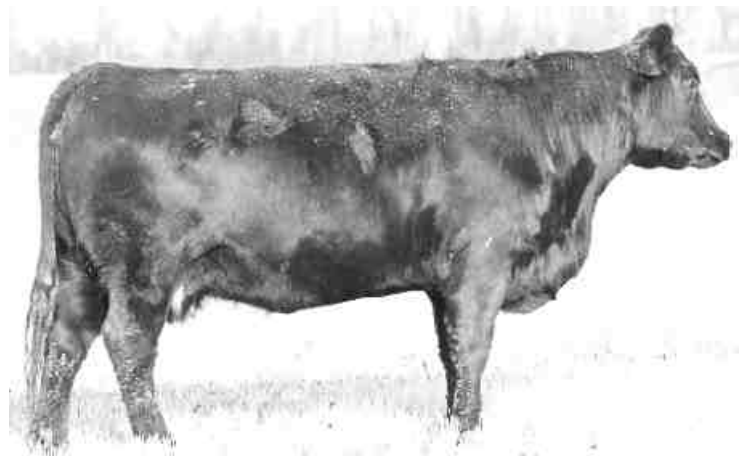
KFB 135R MARCH 28 2005 #1313785

HOFF HEAD OF THE CLASS SC534  
S: CROOKED CREEK CLASS 5N  
CROOKED CREEK DEWDROP 64E

GDAR SVF TRAVELER 234D NHF AMF CAF  
D: CROOKED CREEK FAVORITE 86L  
CROOKED CREEK FAVORITE 27C

	WTs	EPDs
BW	79	+3.9
WW	563	+42
YW	781	+69
MILK	-	+13
TM		+34

P.E. TO VTG YOUNG BENDER 1W FROM JUNE 10 TO JULY 30.  
DUE MID APRIL.



CROOKED CREEK FAVORITE 135R - LOT 61

## NJA DEWDROP 108P

62

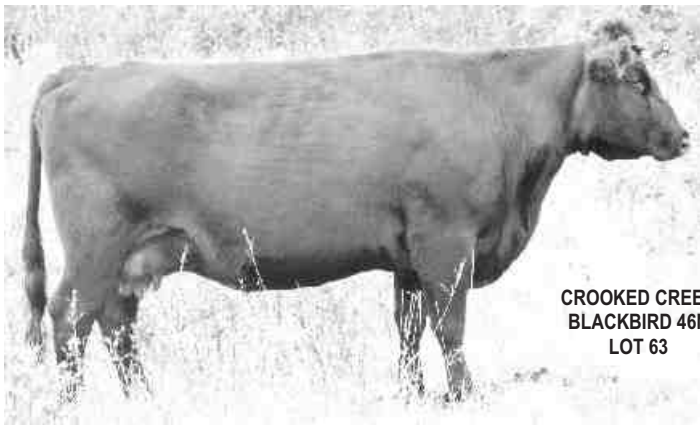
NJA 108P FEBRUARY 07 2004 #1256574

O G L BATTLE CRY 427 128  
S: NJA BATTLE 13M  
NJA FAVORITE 27F

HOFF TRIUMPH S C 927 NHF AMF CAF  
D: NJA DEWDROP 21H  
NJA DEWDROP 12F

	WTs	EPDs
BW	81	+2.1
WW	436	+30
YW	-	+68
MILK	-	+20
TM		+35

A.I. TO VTG FREEDOM 34S ON MAY 8. P.E. TO MMG FREE SPIRIT 116W FROM  
JUNE 30 TO NOV 16. DUE LATE MARCH.



CROOKED CREEK  
BLACKBIRD 46N  
LOT 63

## CROOKED CREEK BLACKBIRD 46N **63**

KFB 46N FEBRUARY 04 2003 #1301939

CONNELLY FRONTLINE NHF AMF CAF  
S: CROOKED CREEK FRONTLINE 49K  
CROOKED CREEK MS MORRISON 21G

SITZ TRAVELER 8180 NHF AMF CAF  
D: CROOKED CREEK BLACKBIRD 17H  
CROOKED CREEK BLACKBIRD 36D

	WTs	EPDs
<b>BW</b>	75	+1.8
<b>WW</b>	536	+30
<b>YW</b>	832	+58
<b>MILK</b>	-	+15
<b>TM</b>		+30

A.I. ON MAY 15 TO MMG BENDER 80T. DUE MID FEB.

## J D TIBBIE 106N **64**

ESG 106N JANUARY 13 2003 #1141604

SVF GDAR 216 LTD  
S: CIRCLE A 2000 PLUS AMF  
CIRCLE A RITA 5H11 3201

BELVIN BOARDWALK 11'92  
D: J D TIBBIE 2  
GREENBUSH TIBBIE 12E

	WTs	EPDs
<b>BW</b>	75	+5.4
<b>WW</b>	-	+47
<b>YW</b>	-	+78
<b>MILK</b>	-	+23
<b>TM</b>		+47

A.I. TO MMG FREEDOM 38S ON MAY 26. DUE MID FEB.



J D TIBBIE 106N - LOT 64

## NJA DEWDROP 18M **65**

NJA 18M JANUARY 15 2002 #1107508

B/R NEW DESIGN 036 NHF AMF  
S: BON VIEW NEW DESIGN 1407 NHF AMF CAF  
BON VIEW PRIDE 664

KESSLERS RAINMAN 002  
D: NJA DEWDROP 8D  
CROOKED CREEK DEWDROP 20B

	WTs	EPDs
<b>BW</b>	80	+1.6
<b>WW</b>	721	+38
<b>YW</b>	990	+74
<b>MILK</b>	-	+20
<b>TM</b>		+39

A.I. TO CROOKED CRK FREEDOM 100U JUNE 3. DUE EARLY MARCH.



NJA DEWDROP 18M  
LOT 65

## CROOKED CREEK ERROLINE 31M **66**

KFB 31M JANUARY 19 2002 #1142599

HOFF HI FLYER S C 7134 NHF AMF CAF  
S: SUMMITCREST HI FLYER 3B18 NHF AMF CAF  
SUMMITCREST LASS 229Y

TC ADVANTAGE NHF AMF CAF  
D: CROOKED CREEK ERROLINE 2K  
CROOKED CREEK ERROLINE 41Z

	WTs	EPDs
<b>BW</b>	70	+0.6
<b>WW</b>	698	+43
<b>YW</b>	996	+76
<b>MILK</b>	-	+18
<b>TM</b>		+40

A.I. TO CROOKED CRK FREEDOM 100U JUNE 4. DUE EARLY MARCH.

## CROOKED CREEK LASS 27L **67**

KFB 27L JANUARY 29 2001 #1199083

CONNELLY DATELINE  
S: CONNELLY LEADTIME NHF AMF CAF  
RUTHS RONA OF CONANGA

CROOKED CREEK THREAT 45G  
D: CROOKED CREEK LASS 31J  
CROOKED CREEK LASS 39F

	WTs	EPDs
<b>BW</b>	78	+1.9
<b>WW</b>	742	+51
<b>YW</b>	856	+86
<b>MILK</b>	-	+17
<b>TM</b>		+43

A.I. TO CROOKED CRK FREEDOM 100U APRIL 8. P.E. TO C CRK 116W FROM  
JUNE 30 TO NOV 16. DUE EARLY MARCH.



CROOKED CREEK ERROLINE 31M - LOT 66

## NJA BLACKBIRD 44L

NJA 44L FEBRUARY 02 2001 #1324430

HOFF HI FLYER S C 7134 NHF AMF CAF  
S: SUMMITCREST HI FLYER 3B18 NHF AMF CAF  
SUMMITCREST LASS 229Y

SITZ TRAVELER 8180 NHF AMF CAF  
D: NJA BLACKBIRD 26H  
NJA FAVORITE 27F

A.I. TO MMG FREEDOM 38S ON APRIL 27. P.E. TO VTG INITIATIVE 3W FROM  
JULY 1 TO NOV 15. DUE LATE MARCH.

68

	WTs	EPDs
BW	80	+1.7
WW	-	+38
YW	-	+71
MILK	-	+17
TM		+36



NJA BLACKBIRD 44L  
LOT 68



CROOKED CREEK  
BARBARA ROSE 34K  
LOT 69

## CROOKED CREEK

### BARBARA ROSE 34K

KFB 34K FEBRUARY 01 2000 #1033423

CONNEALY DATELINE  
S: CONNEALY FRONTLINE AMF NHF CAF  
PLEASANT PILL OF CONANGA

WHITESTONE FLY TRAVELER AMF NHF CAF  
D: CROOKED CREEK BARBARA ROSE 6F  
CROOKED CREEK BARBARA ROSE 32U

A.I. ON MAY 13 TO SITZ UPWARD. DUE MID FEB.

69

	WTs	EPDs
BW	75	+1.0
WW	586	+38
YW	876	+71
MILK	-	+15
TM		+34

## CROOKED CREEK MS MORRISON 66H

KFB 66H MARCH 21 1998 #945608

KESSLERS RAINMAN 002  
S: CROOKED CREEK KESS MAN 11D  
CROOKED CREEK LUCY 67B

PREMIER INDEPENDENCE K N CAC  
D: PROSPECT MISS MORRISON 21S  
MISS MORRISON DON WOOD 43 72

A.I. TO CONNEALY STIMULUS 8419 ON MAY 13. DUE MID FEB.

70

	WTs	EPDs
BW	80	+1.6
WW	619	+20
YW	886	+37
MILK	-	+11
TM		+21



CROOKED CREEK  
MS MORRISON 66H  
LOT 70

## CROOKED CREEK LUCY 40G

KFB 40G JANUARY 24 1997 #907383

EMULATION N BAR 5522  
S: N BAR EMULATION EXT NHF AMF CAF  
N BAR PRIMROSE 2424

LLB BABE RUTH 80Z  
D: CROOKED CREEK LUCY 67B  
LUCY OF GUMBO GULCH 99Y

A.I. ON MAY 8 TO SAV NET WORTH 4200. DUE MID FEB.

71

	WTs	EPDs
BW	85	+3.0
WW	538	+28
YW	759	+50
MILK	-	+7
TM		+21



CROOKED CREEK  
LUCY 40G  
LOT 71

# Angus Females Selling without Registration Papers

## C CRK 132W

**72**

KFB 132W APRIL 12 2009 #CM257768

NJA ELIXIR 37N  
**S: NJA ELIXIR 168S**  
 CROOKED CREEK DEWDROP 26G  
  
 K C F BENNET COALITION SCC AMF NHF CAF  
**D: CROOKED CREEK 19S**  
 CROOKED CREEK JESTRESS 88M

	WTs	EPDs
BW	-	-
WW	-	-
YW	-	-
MILK	-	-
TM		-

A.I. TO VTG FREEDOM 34S ON MAY 11. DUE LATE FEB.

## C CRK QUEEN MOM 3W

**74**

KFB 3W JULY 27 2009 #CM290554

**S: ANGUS BULL**  
  
 KMK ALLIANCE 6595 187 AMF NHF CAF  
**D: CROOKED CRK QUEEN MOM 25T**  
 CROOKED CREEK QUEEN MOM 84M

	WTs	EPDs
BW	-	-
WW	-	-
YW	-	-
MILK	-	-
TM		-

P.E. TO CROOKED CREEK ICEMAN 1W FROM APRIL 10 TO JULY 30. DUE MID MARCH.

## C CRK DEWDROP 56W

**76**

KFB 56W FEBRUARY 07 2009 #1508702

SITZ TRAVELER 8180 NHF AMF CAF  
**S: S A V FINAL ANSWER 0035 NHF AMF CAF**  
 S A V EMULOUS 8145

KING KAHN B100 NHC AMF CAF  
**D: CROOKED CREEK DEWDROP 41P NHC**  
 CROOKED CREEK DEWDROP 18K

	WTs	EPDs
BW	64	-1.3
WW	-	+46
YW	-	+94
MILK	-	+21
TM		-

A.I. ON MAY 8 TO SAF CONNECTION. P.E. TO CROOKED CRK ICEMAN 1W. DUE MID APRIL.

## CROOKED CREEK DEWDROP 69T

**78**

KFB 69T FEBRUARY 08 2007 #1404957

S A F 598 BANDO 5175 AMF CAC  
**S: S A V 5175 BANDO 4597 NHF AMF CAC**  
 CHAMPION HILL BLOSSOM 1611 NHC AMF

KING KAHN B100 NHC AMF CAF  
**D: CROOKED CREEK DEWDROP 41P NHC**  
 CROOKED CREEK DEWDROP 18K

	WTs	EPDs
BW	73	+2.1
WW	577	+49
YW	-	+93
MILK	-	+28
TM		+53

A.I. TO CROOKED CRK FREEDOM 100U ON APRIL 25. DUE EARLY FEB.

## RED C CRK BLACKBIRD

**80**

KFB 84W FEBRUARY 22 2009 #1508712

RED BFCK CHEROKEE CNYN 4912 MAF OSF  
**S: RED LCC MAJOR LEAGUE A502M MAF OSF**  
 RED KRN REBA'S ROBIN OSF

RED MLK CRK CUB 722 OSF  
**D: RED C CRKBLACKBIRD 69N**  
 RED CROOKED CREEK BLCKBIRD 51L

	WTs	EPDs
BW	83	+1.1
WW	-	+38
YW	-	+60
MILK	-	+9
TM		-

A.I. TO CROOKED CREEK JUMBO 26K ON MAY 9. DUE LATE FEB.

## CD CRK FOXIE 143W

**73**

KFB 143W APRIL 20 2009 #CM290736

TC FREEDOM 104 AMF NHF  
**S: CROOKED CREEK FREEDOM 82R**  
 CROOKED CREEK DEWDROP 7L

ANGUS BULL  
**D: CROOKED CREEK FOXIE 150T**  
 CROOKED CREEK FOXIE 158R

	WTs	EPDs
BW	85	+3.0
WW	538	+28
YW	759	+50
MILK	-	+7
TM		+21

A.I. ON MAY 1 TO SAF CONNECTION. DUE MID FEB.

## C CRK BARB ROSE 58W

**75**

KFB 58W FEBRUARY 8 2009 #CM260871

**S: ANGUS BULL**  
  
 CONNEALY LEAD ON AMF NHF CAF  
**D: CROOKED CRK BARB ROSE 41R**  
 CROOKED CREEK BARBARA ROSE 21L

A.I. ON MAY 2 & MAY 23 TO SAF CONNECTION. DUE EARLY MARCH.

	WTs	EPDs
BW	-	-
WW	-	-
YW	-	-
MILK	-	-
TM		-

## CRKED CRK DEWDROP 155U

**77**

KFB 155U JUNE 01 2008 #1454500

CROOKED CREEK IMPROVE 57L  
**S: NJA IMPROVE 118N**  
 CROOKED CREEK FAVORITE 65K

KING KAHN B100 NHC AMF CAF  
**D: CROOKED CREEK DEWDROP 33P NHC**  
 CROOKED CREEK DEWDROP 50J

	WTs	EPDs
BW	68	+3.4
WW	452	+40
YW	-	+89
MILK	-	+9
TM		+29

A.I. ON MAY 25 TO CONNEALY STIMULUS 8419. DUE EARLY MARCH.

## CROOKED CREEK DEWDROP 41P

**79**

KFB 41P JANUARY 31 2004 #1291556 NHC

B/R NEW DESIGN 323  
**S: KING KAHN B100 NHC AMF CAF**  
 G A R PRECISION 706 NHC AMF

CROOKED CREEK THREAT 45G  
**D: CROOKED CREEK DEWDROP 18K**  
 CROOKED CREEK DEWDROP 15C

	WTs	EPDs
BW	82	+3.4
WW	574	+42
YW	809	+84
MILK	-	+21
TM		+42

A.I. TO CONNEALY STIMULUS 8419 ON MAY 16. DUE LATE FEB.

# Red Angus Females



**RED C CRK HENRIETTA 120W**

KFB 120W APRIL 05 2009 #1508722

RED LODI PRINCE 2632 MAF OSF  
**S: RED CROOKED CREEK PRINCE 9P**  
 RED G FORCE HENRIETTA 9G

RED MLK CRK CUB 722 OSF  
**D: RED CROOKED CRK HENRIETTA 22R**  
 RED CROOKEDCREEK HENREITA 104L

**P.E. TO CROOKED CREEK ICEMAN 1W FROM MAY10 TO JULY 30.  
 DUE LATE MARCH.**

**81**

	WTs	EPDs
<b>BW</b>	90	+2.8
<b>WW</b>	-	+27
<b>YW</b>	-	+49
<b>MILK</b>	-	+10
<b>TM</b>		-



RED C CRK  
 HENRIETTA 120W  
 LOT 81



RED C CRK  
 BLACKBIRD 77W  
 LOT 82

**RED C CRK BLACKBIRD 77W**

KFB 77W FEBRUARY 20 2009 #1508776

RED SHOCO SIR ROBIN  
**S: RED SHOCO DATA MAF OSF**  
 RED VDAR BLACKANA 303

RED MLK CRK CUB 722 OSF  
**D: RED C CRK BLACKBIRD 61R**  
 RED CROOKED CREEK BLKBIRD 51L

**P.E. TO CROOKED CREEK ICEMAN 1W FROM MAY10 TO JULY 30.  
 DUE LATE MARCH.**

**82**

	WTs	EPDs
<b>BW</b>	77	+0.5
<b>WW</b>	-	+30
<b>YW</b>	-	+49
<b>MILK</b>	-	+7
<b>TM</b>		-

**RED CRKED CRK HENRIETTA 126U**

KFB 126U APRIL 08 2008 #1449420

RED LODI PRINCE 2632 MAF OSF  
**S: RED CROOKED CREEK PRINCE 9P**  
 RED G FORCE HENRIETTA 9G

RED MLK CRK CUB 722 OSF  
**D: RED C CRK HENRIETTA 65R**  
 RED G FORCE HENRIETTA 9G

**A.I. ON JUNE 12 TO MMG BENDER 80T. DUE MID MARCH.**

**83**

	WTs	EPDs
<b>BW</b>	86	+1.7
<b>WW</b>	586	+25
<b>YW</b>	681	+48
<b>MILK</b>	-	+8
<b>TM</b>		+20

**RED CROOKED CREEK  
 BLACKBIRD 15P**

KFB 15P JANUARY 19 2004 #1291548

RED GLACIER CUB 446 MAF OSF  
**S: RED MLK CRK CUB 722 OSF**  
 RED MLK CRK LAKOTA 152-HOBO OSF

RED LCHMN GOLD ROBBER 1909E MAF OSF  
**D: RED CROOKED CREEK BLACKBIRD 47**  
 RED CROOKED CREEK BLACKBIRD 6K

**A.I. ON MAY 18 TO MMG BENDER 80T. DUE MID MARCH.**

**84**

	WTs	EPDs
<b>BW</b>	60	-2.3
<b>WW</b>	536	+18
<b>YW</b>	744	+35
<b>MILK</b>	-	+14
<b>TM</b>		+23

**RED CROOKEDCREEK  
 HENREITA 106L**

KFB 106L MARCH 24 2001 #1100434

CROOKED CREEK GRAND SLAM 20C  
**S: RED CROOKED CREEK SLAM 42E**  
 CROOKED CREEK DEWDROP 59Y

RED LCC HEAVEN OR BUST1000B MAF OSF  
**D: RED G FORCE HENRIETTA 78F**  
 RED G FORCE HENRIETTA 17D

**A.I. TO CROOKED CREEK ICEMAN 1W ON JUNE 9. DUE MID MARCH.**

**85**

	WTs	EPDs
<b>BW</b>	70	-1.1
<b>WW</b>	605	+12
<b>YW</b>	831	+25
<b>MILK</b>	-	+15
<b>TM</b>		+21



RED CROOKED CREEK  
 BLACKBIRD 15P  
 LOT 84

# Reference Sires

## CROOKED CRK ICEMAN 1W

KFB 1W JANUARY 28 2009 #1497078

S A F FOCUS OF E R NHF AMF CAF  
S: MYTTY IN FOCUS NHF AMF CAF  
MYTTY COUNTESS 906

CROOKED CREEK FREEDOM 82R  
D: NJA DEWDROP 22T  
NJA DEWDROP 12J

	WTs	EPDs
BW	85	+2.9
WW	770	+63
YW	1342	+104
MILK	-	+17
TM		-

## VTG INITIATIVE 3W

VTG 3W JANUARY 20 2009 #1507010

S A V 8180 TRAVELER 004 NHF AMF CAF  
S: S A V INITIATIVE 4406 NHF AMF CAF  
S A V MISS BOBBIE 0405

SANDY BAR ADVANTAGE 43M  
D: HF ECHO 11S  
DURALTA 14C ECHO 32E

	WTs	EPDs
BW	86	+4.2
WW	764	+51
YW	1314	+91
MILK	-	+21
TM		-

## C CRK 116W

KFB 116W APRIL 03 2009 #1508721

TC FREEDOM 104 NHF AMF  
S: CROOKED CREEK FREEDOM 82R  
CROOKED CREEK DEWDROP 7L

LCC BIG RIVER 3499J  
D: CROOKED CREEK DEWDROP 98N  
CROOKED CREEK DEWDROP 49H

	WTs	EPDs
BW	89	+3.6
WW	754	+50
YW	1276	+87
MILK	-	+21
TM		-

## LLB GRIDLOCK 293W

LLB 293W FEBRUARY 24 2009 #1508057

TC GRID TOPPER 355 NHF AMF CAF  
S: TIMBER TRAIL GRIDLOCK  
SANE SURV JESTRESS 206P

KBJ NIGHT TRAIN 384H  
D: LLB EULIMA 187K  
LLB EULIMA 106G

	WTs	EPDs
BW	90	+4.6
WW	806	+54
YW	-	+93
MILK	-	+15
TM		+42

## CRKED CRK FREEDOM 100U

KFB 100U MARCH 08 2008 #1461879

TC FREEDOM 104 NHF AMF  
S: VTG FREEDOM 34S  
FISHER DIXIE ERICA 3P

BON VIEW NEW DESIGN 878 NHF AMF CAF  
D: CROOKED CREEK BARBARA ROSE 24M  
CROOKED CREEK BARBARA ROSE 30K

	WTs	EPDs
BW	90	+2.4
WW	717	+51
YW	1378	+108
MILK	-	+25
TM		+51

## MMG FREEDOM 38S

MMG 38S JANUARY 29 2006 #1311621

CONNEALY FOREFRONT NHF AMF CAF  
S: TC FREEDOM 104 NHF AMF  
T C RUBY 9095

RIVERBEND POWERLINE 0050  
D: HFDF ECHO 11N  
HF ECHO 17L

	WTs	EPDs
BW	89	+3.0
WW	752	+36
YW	1301	+85
MILK	-	+28
TM		+46

## VTG YOUNG BENDER 1W

VTG 1W APRIL 16 2009 #1500298

LT CURVE BENDER 4810 OF EA NHF AMF CAF  
S: VTG BENDER 121T  
FISHER DIXIE ERICA 3P

YOUNG DALE TOUCH DOWN 36M  
D: YOUNG DALE ROSEBUD 1T  
VBR ROSEBUD 111H

	WTs	EPDs
BW	-	+3.7
WW	751	+51
YW	1566	+91
MILK	-	+20
TM		-

## MMG FREE SPIRIT16W

MMG 16W FEBRUARY 01 2009 #1506998

TC FREEDOM 104 NHF AMF  
S: VTG FREEDOM 34S  
FISHER DIXIE ERICA 3P

V D A R NEW TREND 802 AMF CAF  
D: CROOKED CREEK DEWDROP 55F  
CROOKED CREEK DEWDROP 29Y

	WTs	EPDs
BW	96	+5.3
WW	666	+39
YW	1321	+91
MILK	-	+20
TM		-

## C CRK FREEDOM 49W

KFB 49W FEBRUARY 05 2009 #1508701

TC FREEDOM 104 NHF AMF  
S: MMG FREEDOM 38S  
HFDF ECHO 11N

W V F HB ATLANTIC NATL MERIT  
D: CROOKED CRK MS MORRISON 34N  
CROOKED CREEK MS MORRISON 16K

	WTs	EPDs
BW	85	+3.4
WW	650	+34
YW	1163	+66
MILK	-	+24
TM		-

## MMG TARGET 4U

MMG 4U JANUARY 20 2008 #1432395

S A F 598 BANDO 5175 AMF CAC  
S: BOYD ON TARGET 1083 NHF AMF CAC  
BOYD FOREVER LADY 7095

V D A R NEW TREND 802 AMF CAF  
D: CROOKED CREEK DEWDROP 55F  
CROOKED CREEK DEWDROP 29Y

	WTs	EPDs
BW	97	+4.0
WW	765	+50
YW	1217	+89
MILK	-	+17
TM		+42

## VTG FREEDOM 34S

VTG 34S JANUARY 28 2006 #1309429

CONNEALY FOREFRONT NHF AMF CAF  
S: TC FREEDOM 104 NHF AMF  
T C RUBY 9095

VERMILION DATELINE 7078 NHF AMF CAF  
D: FISHER DIXIE ERICA 3P  
C M DIXIE ERICA 659G

	WTs	EPDs
BW	87	+3.5
WW	707	+45
YW	1392	+106
MILK	-	+28
TM		+51

## LT CURVE BENDER 4810 OF EA

IMP 4810P MARCH 02 2004 #1319206  
NHF AMF CAF

SITZ TRAVELER 8180 NHF AMF CAF  
S: S A V 8180 TRAVELER 004 NHF AMF CAF  
BOYD FOREVER LADY 8003

BASIN MAX 602C NHF AMF CAF  
D: SAV BLACKCLASS 203 EA  
S A V BLACKCLASS 718

	WTs	EPDs
BW	-	+4.1
WW	-	+60
YW	-	+116
MILK	-	+22
TM		+52

# A.I. Sires



## SAV FINAL ANSWER 0035

IMP 035K FEBRUARY 22 2000 #1061938  
NHF AMF CAF

G D A R TRAVELER 71 NHF AMF CAF  
S: SITZ TRAVELER 8180 NHF AMF CAF  
SITZ EVERELDA ENTENSE 1137

BON VIEW BANDO 598 AMF CAC  
D: S A V EMULOUS 8145  
S A V SKY EMULOUS 2124

	WTs	EPDs
BW	-	-1.1
WW	-	+61
YW	-	+104
MILK	-	+20
TM		+51



## SAF CONNECTION

(ET) IMP 0097K JANUARY 24 2000 #1083690  
NHF AMF CAF

TRAVELER 124 G D A R  
S: SVF GDAR 216 LTD  
G D A R FOREVER LADY 718

BON VIEW BANDO 598 AMF CAC  
D: S A F ROYAL QUEEN 5084  
S A F ROYAL QUEEN 9022

	WTs	EPDs
BW	-	+0.3
WW	-	+47
YW	-	+86
MILK	-	+23
TM		+47



## CONNEALY STIMULUS 8419

IMP 8419U FEBRUARY 04 2008#1582393  
NHF AMF

SITZ ALLIANCE 6595 NHF AMF  
S: H A POWER ALLIANCE 1025 NHF AMF CAF  
H A RITO LADY 4167

G A R GRID MAKER NHF AMF CAF  
D: BLACK CREESA OF CONANGA 5332  
BLACK CRUST OF CONANGA

	WTs	EPDs
BW	-	+4.4
WW	-	+55
YW	-	+100
MILK	-	+19
TM		-



## SAV BISMARCK 5682

(ET) IMP 5682R FEBRUARY 01 2005 #1369591  
NHF AMF CAF

G D A R TRAVELER 044 NHF AMF CAF  
S: G A R GRID MAKER NHF AMF CAF  
G A R PRECISION 2536 NHF AMC


SCHOENES FIX IT 826 NHF AMF CAF  
D: S A V ABIGALE 0451  
S A V ABIGALE 6062

	WTs	EPDs
BW	-	+0.0
WW	-	+56
YW	-	+100
MILK	-	+27
TM		-

View the catalogue online at:

[www.optimalbovines.com](http://www.optimalbovines.com) OR [www.cattlemanagement.ca](http://www.cattlemanagement.ca)

Sale managed by:



**Optimal Bovines Inc.**  
Rob Holowaychuk: (780) 916-2628  
Bob Toner: (306) 834-7385  
email: o.b.i@shaw.ca  
[www.optimalbovines.com](http://www.optimalbovines.com)  
[www.cattlemanagement.ca](http://www.cattlemanagement.ca)

### SALES STAFF

Auctioneer: Dan Skeels.....403-783-1217  
Ringman: Mark Stock .....306-678-4811  
Rob Holowaychuk, OBI .....780-916-2628  
Bob Toner, OBI .....306-834-7385  
Blair Vold, VJV .....403-783-0660  
Blair Nansen, VJV .....403-783-0349  
Stan Skeels, VJV .....403-704-0288

SALE DAY PHONES: Rob: 780-916-2628 • Bob: 306-834-7385 • AUCTION MART: 403-783-5561