

## LOCUST GROVE MARION 9X LOT 38

WTM 9X JANUARY 14 2010 #1551689

SITZ TRAVELER 8180 NHF AMF  
 S A V 8180 TRAVELER 004 NHF AMF  
 BOYD FOREVER LADY 8003  
**S: S A V NET WORTH 4200 NHF AMF**  
 S A F 598 BANDO 5175 AMF  
 S A V MAY 2410  
 S A V MAY 6269

G A R SLEEP EASY 1009 NHF AMF  
 MILLCREEK DIVERSITY NHF AMF  
 MILLCREEK TRAVEL LASS  
**D: ALLENCROFT MISS MARION 04 178P**  
 ALLENCROFT FLYER 02 124H  
 ALLENCROFT MISS MARION 03 138K  
 ALLENCROFT MISS MARION 03 91F

SC	YG	BW	WW	YW	MILK	MAT	BW	WW	YW
-	+44	+3.7	+48	+91	+19	+43	89	-	-

Make sure you don't overlook this heifer if you are looking for a show prospect! A fancy, eye appealing, powerful Networth daughter who is a favorite with all visitors to the farm. Her dam is very maternal with a beautiful udder. With an excellent set of EPD's she should have a great brood cow future. Entered at this year's RAWF. Eligible for Central Ontario Angus \$250.00 rebate upon completion of a Junior 4H project.



LOCUST GROVE MARION 9X - LOT 38

## LOCUST GROVE ERICA 26X LOT 39

TW WTM 26X MARCH 02 2010 #1551695

D H D TRAVELER 6807 NHF AMF  
 O C C EMBLAZON 854E NHF AMF  
 DIXIE ERICA OF C H 1019  
**S: B C C-J C L EMBLAZON 038-287**  
 ROCKN D AMBUSH 1531 NHF AMF  
 B C C 1531 ELDORENE 826-038  
 KAPP ELDORENE ERICA ND 826

N BAR EMULATION EXT NHF AMF  
 WHITESTONE WIDESPREAD MB NHF AMF  
 M B RACHEL 2173  
**D: LOCUST GROVE ERICA K3**  
 ANGUS KNOLL SHOCKER 15'88  
 KLT ERICA 6A  
 BASIN ELINE ERICA 2872

SC	YG	BW	WW	YW	MILK	MAT	BW	WW	YW
-	+36	+4.4	+44	+79	+11	+33	89	-	-

An easy fleshing Emblazon daughter whose dam was purchased in dam at the 1999 Highlight Sale. Will be halter broke and eligible for the Central Ontario Angus \$250.00 rebate upon completion of a Junior 4H project.



B C C-J C L EMBLAZON 038-287 - SIRE OF LOT 39

## Rolling Acres Farms

STEPHEN, PAULA, LAIRD & MARY HAMILTON  
 C260 Heath Road Shawville, PQ J0X 2Y0  
 (819) 647-3540 • www.rollingacres.biz

Our Angus herd began in 2000...a new venture for third generation Hereford breeders! Currently we are breeding over 50 Angus females, and over 200 Hereford cows (100 of which are bred Angus to supply our F1 female market). The purebred heifers and bulls are home tested and predominately sold by private treaty. Along with our Angus and Hereford herds, we have branched into finishing and retailing beef in our on-farm store. Visitors are always welcome. We are located just across the river from Renfrew, Ontario or 1 hour west of Ottawa.



## LOT 40

### ROLLING ACRES PRIDE 233W

RAA 233W APRIL 15 2009 #1535255

SITZ TRAVELER 8180 NHF AMF  
 SITZ ALLIANCE 6595 NHF AMF  
 SITZ BARBARAMERE JET 2698  
**S: ROLLING ACRES 6595 25T**  
 G D A R ROGUE 6322  
 MJLC MCHENRY LASS 25J  
 GEIS MCHENRY LASS 217'96

WHITESTONE FLY TRAVELER 3006 NHF AMF  
 EQUITY FLY TRAVELER NITRO 47  
 KYBURGS SPIRIT  
**D: WKF PRIDE 33S**  
 ALTA ERIC REVOLUTION 464D  
 WAVENY PRIDE 75H  
 WAVENY PRIDE 40E

SC	YG	BW	WW	YW	MILK	MAT	BW	WW	YW
-	+33	+1.3	+31	+64	+21	+37	80	545	-

**SERVICE: EXPOSED FROM MAY 27 TO JULY 14 TO BAILEY ACRES DIPLOMAT 2W. DUE MARCH 2011.**

Pride 233W is a moderate framed, deep ribbed heifer. Bred to Diplomat who is an excellent New Attraction son out of Tambri Daisy 10P. Maternal sister sold to Forsyth Ranch in last years' Highlight Sale.



### LOT 41

## ROLLING ACRES NITCHIE 244W

RAA 244W FEBRUARY 08 2009 #1512759

B/R NEW DESIGN 036 NHF AMF      DA ES RO TWISTER 0627  
 B/R NEW FRONTIER 095 NHF AMF      ROLLING ACRES TWISTER 24M  
 WHITE FENCE PRIDE H1      DODSWOOD ENCHANTRESS 598-24F  
**S: ROLLING ACRES FRONTIER 28N**      **D: ROLLING ACRES NITCHIE 234R**  
 BOYD NEW DAY 8005 NHF AMF      ROYLE-HEAD RIGHT TIME 27E  
 RIDEAU ZARA 28K      LLB NITCHIE 334K  
 RIDEAU ZARA 29F      LLB NITCHIE 5F

SC	YG	BW	WW	YW	MILK	MAT	BW	WW	YW
-	+42	+5.1	+49	+91	+16	+41	95	572	-

**SERVICE: A.I. ON APRIL 6 TO DUFF NEW ATTRACTION. EXPOSED FROM MAY 27 TO JULY 14 TO BAILEY ACRES DIPLOMAT 2W. DUE JAN 12 2011.**

Nitchie 244W is a powerful heifer stemming from a solid LLB foundation.

## Service Animal Noiseux

LUC & CHANTEL NOISEUX

20, Rang Elmire

St. Paul D'Abbotsford, QC J0E 1A0

(450) 379-9989

Once again we would like to thank the Highlight Group for inviting us to this very fine event. We strive to market very correct, sound females across the land. If I can help you in any way please do not hesitate to call or stop by for a visit anytime.



### SANE 416 PRIDE 120W

SANE 120W JANUARY 20 2009 #1505430

RITO 616 OF 4B20 6807 NHF AMF      WHITESTONE SURVIVOR N088 NHF AMF  
 RITO 112 OF 2536 RITO 616 NHF AMF      SANE 317J SURVIVOR 319P  
 G A R PRECISION 2536 NHF AMC      SAN EXT BLACKBIRD 317J  
**S: TC RITO 416 NHF AMF**      **D: SANE 319P PRIDE 316S**  
 CONNEALY FOREFRONT NHF AMF      S A F 598 BANDO 5175 AMF  
 TC CHLOE 2056      SANE 5175 PRIDE 226M  
 TC CHLOE 6010      SANE 27D PRIDE 506H

SC	YG	BW	WW	YW	MILK	MAT	BW	WW	YW
-	+41	+1.9	+53	+94	+24	+51	77	-	-

**SERVICE: AI. ON APRIL 18 TO WILDE'S ARMOR 6210.**

120W is from the good Pride family. We are able to market 120W because her mother is still young enough and the grandmother a 5175 daughter still is producing for us. 120W was 2nd at Showdown 2010. She was also Junior Champion at the Quebec Expo 2010. Bred to a son of Mytty In Focus, Wilde's Armor 6210.

### SANE 102T ELMIRA 228W

SANE 228W FEBRUARY 28 2009 #1522520

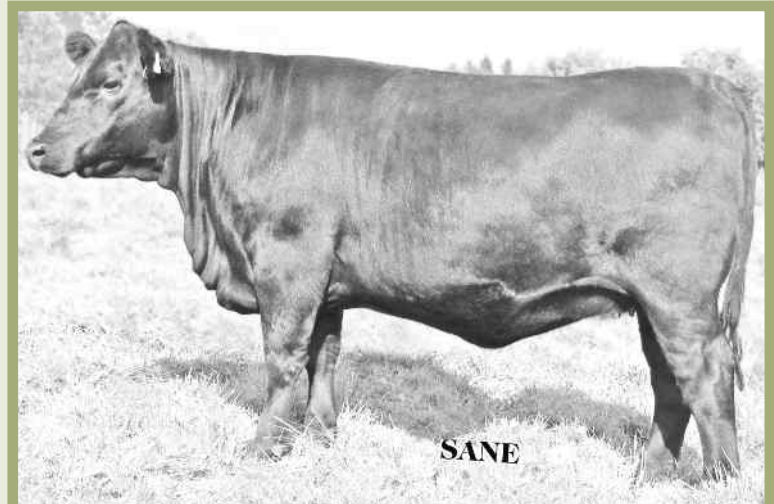
### LOT 43

WOODHILL ADMIRAL 77K NHF AMF      R&J ACE  
 WOODHILL COMMANDER 143LNHF AMF      RAN BURNY ROUVILLE 3B  
 WOODHILL ERICA 1167-143L      PREMIER QUEEN 8010C  
**S: SANE 125N COMMANDER 102T**      **D: RAN ELCOME 12E**  
 BT DIRECTION 65D NHF AMF      PROSPECT POWER PLAY 23R  
 SANE 65D PRIDE 125N      WELCOME 23R DE ROUVILLE 20W  
 SANE 27D PRIDE 506H      OLIVE DE ROUVILLE

SC	YG	BW	WW	YW	MILK	MAT	BW	WW	YW
-	+23	+5.8	+39	+62	+12	+32	92	-	-

**SERVICE: BRED ON APRIL 27 TO SANE 22K NET WORTH 217U.**

Another deep bodied, high muscled daughter of our Commander 102T herdsire. Her mother is deep bodied, easy keeping and very good milker. She is bred to a Net Worth son we have roaming the pastures.





**LOT 44**

**SANE 319P BLACKBIRD 502W**

**SANE 502W MAY 02 2009 #1505417**

B C C BUSHWACKER 41-93 NHF AMF  
 WHITESTONE SURVIVOR N088 NHF AMF  
 M B RACHEL 2173  
**S: SANE 317J SURVIVOR 319P**  
 N BAR EMULATION EXT NHF AMF  
 SAN EXT BLACKBIRD 317J  
 SAN VF BLACKBIRD 402F

LEACHMAN RIGHT TIME AMF  
 SAN RIGHT TIME 108F  
 CCCC QUEENETTE 34C  
**D: SAN 108F BLACKBIRD 22K**  
 RED SAGEBUSH ICEBERG 24B  
 SAN 24B BLACKBIRD 313G  
 RAN BLACKBIRD ROUVILLE 20B

SC	YG	BW	WW	YW	MILK	MAT	BW	WW	YW
-	+37	+2.6	+42	+79	+13	+34	75	-	-

**SERVICE: A.I. ON JULY 1 TO CW DAKOTA GOLD 164.**

She is a maternal sister to SANE 22K Net Worth 217U, the service sire of Lot 43 and 45. We really appreciate his easy keeping, heavy muscling and easy calving he has gave to us on his first calf crop. Bred to CW Dakota Gold 164, KG Dakota son out of a Generic Bando 3117 daughter.



**LOT 45**

**SANE 102T PATTY 320W**

**SANE 320W MARCH 20 2009 #1522523**

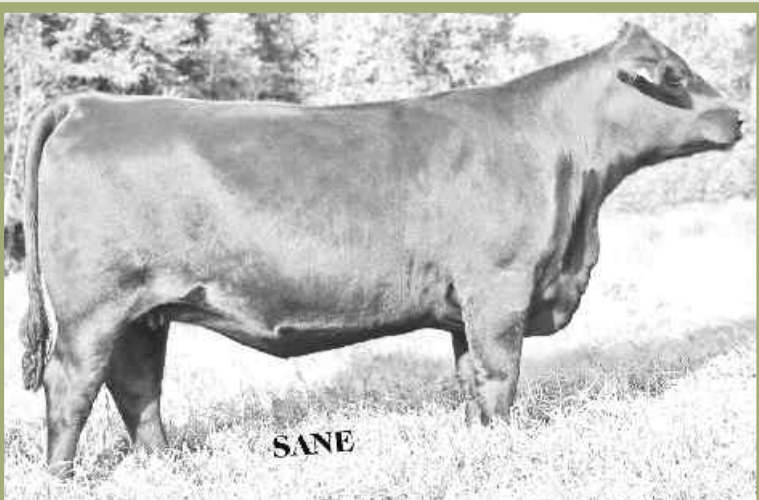
WOODHILL ADMIRAL 77K NHF AMF  
 WOODHILL COMMANDER 143LNHF AMF  
 WOODHILL ERICA 1167-143L  
**S: SANE 125N COMMANDER 102T**  
 BT DIRECTION 65D NHF AMF  
 SANE 65D PRIDE 125N  
 SANE 27D PRIDE 506H

WHITESTONE SURVIVOR N088 NHF AMF  
 SANE 317J SURVIVOR 319P  
 SAN EXT BLACKBIRD 317J  
**D: SANE 319P PATTY 213T**  
 RITO 2100 G D A R  
 SAN 2100 PATTY 627K  
 CCCC PATTY 4E

SC	YG	BW	WW	YW	MILK	MAT	BW	WW	YW
-	+34	+4.4	+43	+77	+18	+40	75	-	-

**SERVICE: BRED ON MAY 28 TO SANE 22K NET WORTH 217U.**

320W is a very nice heifer just like her momma who was shown twice at the Royal Winter Fair. On the sire side the Pride 125N was a real complete cow that produced us 2 herd bulls. We are using another bull at home this year.



**LOT 46**

**SANE ADM BLACK KERRIE 103W**

**SANE 103W JANUARY 03 2009 #1502940**

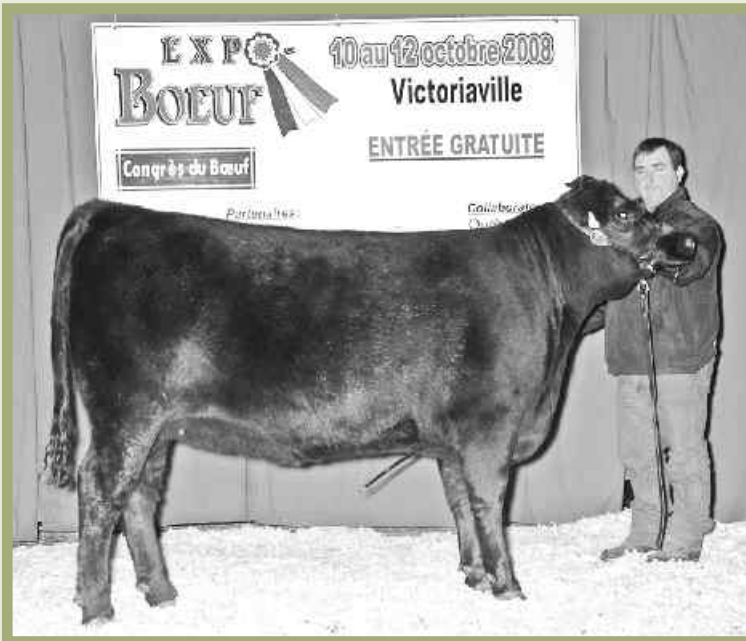
S A F FAME NHF AMF  
 S A F FOCUS OF E R NHF AMF  
 G D A R FOREVER LADY 246  
**S: WOODHILL ADMIRAL 77K NHF AMF**  
 R R SCOTCHCAP 9440 NHF AMF  
 WOODHILL LASS 344-1178  
 WOODHILL LASS 1172-344

G A R PRECISION 1680 NHC AMC  
 C A FUTURE DIRECTION 5321 NHC AMC  
 C A MISS POWER FIX 308 AMF  
**D: KLT BLACKBIRD MINNIE 24M**  
 GET-A-LONG BLACK DIAMOND 446  
 KLT BLACKBIRD'S KERRI 12K  
 KLT 711 BLACKBIRD 3D

SC	YG	BW	WW	YW	MILK	MAT	BW	WW	YW
-	+33	+4.9	+47	+80	+19	+43	92	-	-

**SERVICE: A.I. ON APRIL 6 TO GDAR GAME DAY 449.**

A nice female with a wide top and good muscling. The dam is another nice moderate framed cow. She has a full brother at her side this year, a very good bull calf with big muscle. We are planning to use next year for the breeding season. 2nd at the Showdown 2010. Bred to GDAR Game Day 449.



SANE 319P PRINCESS 129T - DAM OF LOT 47

**SANE 416 PRINCESS 202W**

**LOT 47**

**SANE 202W FEBRUARY 02 2009 #1502938**

RITO 616 OF 4B20 6807 NHF AMF  
 RITO 112 OF 2536 RITO 616 NHF AMF  
 G A R PRECISION 2536 NHF AMC  
**S: TC RITO 416 NHF AMF**  
 CONNEALY FOREFRONT NHF AMF  
 TC CHLOE 2056  
 TC CHLOE 6010

WHITESTONE SURVIVOR N088 NHF AMF  
 SANE 317J SURVIVOR 319P  
 SAN EXT BLACKBIRD 317J  
**D: SANE 319P PRINCESS 129T**  
 G D A R ROGUE 6322  
 KBJ PRINCESS 212K  
 KBJ PRINCESS 105Y

SC	YG	BW	WW	YW	MILK	MAT	BW	WW	YW
-	+39	+1.6	+49	+88	+23	+48	70	-	-

**SERVICE: A.I. ON APRIL 22 TO CW DAKOTA GOLD 164.**

She was shown last year with her dam and won her class at most of the shows we attended. Her dam and granddam are still working at home and doing a good job.

**LOT 48**

**SANE N.W. BLACKCAP 127W**

**SANE 127W JANUARY 27 2009 #1505422**

SITZ TRAVELER 8180 NHF AMF  
 S A V 8180 TRAVELER 004 NHF AMF  
 BOYD FOREVER LADY 8003  
**S: S A V NET WORTH 4200 NHF AMF**  
 S A F 598 BANDO 5175 AMF  
 S A V MAY 2410  
 S A V MAY 6269

GEIS MAXIMUM 80'01  
 DRYLAND MAX 389  
 BAD LANDS BARBARA 746G  
**D: KBJ BLACKCAP 124R**  
 KBJ MAX 212F  
 KBJ BLACKCAP 533M  
 MINBURN BLACKCAP 109G

SC	YG	BW	WW	YW	MILK	MAT	BW	WW	YW
-	+37	+3.9	+48	+84	+18	+42	84	-	-

**SERVICE: A.I. ON JUNE 19 TO TC RITO 416.**

127W is just like her mother; deep bodied, nice muscled, good footed and well balanced. She still produced another very nice heifer calf this year. She is bred to TC Rito 416, an outcross, calving ease pedigree.



**SANE HERIT BARBIE 124X**

**LOT 49**

**SANE 124X JANUARY 24 2010 #1558767**

CAR TRACKER 904  
 CAR DUKE 104  
 C A R MISS RAINDANCER 421  
**S: S A V HERITAGE 6295 NHF AMF**  
 S A V 8180 TRAVELER 004 NHF AMF  
 S A V BLACKCAP MAY 4136  
 S A V MAY 2397

SAN RIGHT TIME 108F  
 SAN 108F RIGHT TIME 110K  
 SAN 1A PRIDE 6D  
**D: SANE 110K BARBIE 324M**  
 EMERALD HILLS BEAU  
 EMERALD HILLS BARBIE 17C  
 EMERALD HILLS EVERGREEN

SC	YG	BW	WW	YW	MILK	MAT	BW	WW	YW
-	+42	+3.5	+47	+89	+24	+48	90	-	-

124X is the maternal sister to the Barbie 122W who was named Senior Heifer Calf Champion at the Royal and Expo Boeuf 2009. Barbie 124S, another maternal sister was Reserve Champion at Expo Boeuf 2007. Barbie 110U, another maternal sister was Heifer Calf Champion and Reserve Champion at the Royal 2008. The mother always raises the good ones and 124X is no exception! All the work has been done for you!

# Sunset Acres

ROB & SANDY FOUBERT  
4373 Rideau River Rd. Kemptville, Ont. K0G 1J0  
(613) 258-1062

We would like to thank the Highlight Group for inviting us into this year's sale. Sunset Acres have been developing top end females for customers across the land. Please stop by to view the offering or give us a call and we will surely be glad to visit with you.



## J D QUEEN 26T

**LOT 50**

ESG 26T MARCH 07 2007 #1367057

B/R NEW DESIGN 036 NHF AMF  
IRONWOOD NEW DESIGN 022 701  
WARDENS LADY 022 5410  
S: IRONWOOD NEW LEVEL NHF AMF  
FINKS 5522-6148  
WARDENS BLACKCAP 6148 6309  
WARDENS BLACKCAP SC 025

ZAK'S EXTRA 3X  
EARLY SUNSET EXTRA 56B  
EARLY SUNSET LADY ANN 29S  
D: GREENBUSH QUEEN 12F  
BROOKMORE WINCHESTER 42T  
GREENBUSH QUEEN 6Z  
BROOKMORE QUEEN 4U

SC	YG	BW	WW	YW	MILK	MAT	BW	WW	YW
-	+25	+2.1	+29	+53	+17	+32	89	472	775

**SERVICE: A.I. ON MAY 10 TO DUFF'S NEW ATTRACTION. EXPOSED FROM JUNE 1 TO JULY 30 TO SUNSET ATTRACTION 6W.**

Here is a real nice deep bodied, great milking female. These Iron New Level cows have great maternal characteristics and style.



## SUNSET BESS 8W

**LOT 51**

SUF 8W APRIL 01 2009 #1528435

G A R PRECISION 1680 NHC AMC  
C A FUTURE DIRECTION 5321 NHC AMC  
C A MISS POWER FIX 308 AMF  
S: HFI NORTHEASTERN 7R AMF  
DOUBLE BAR ROGUE  
HFI MISS MORRISON 11L  
HFI MISS MORRISON 3G

SVF GDAR 216 LTD  
CIRCLE A 2000 PLUS AMF  
CIRCLE A RITA 5H11 3201  
D: SUNSET ACRES BESSIE 5L  
RED BUFCR ARROWHD VC1237  
STALBURN BESSIE 7B  
STALBURN BESSIE 78T

SC	YG	BW	WW	YW	MILK	MAT	BW	WW	YW
-	+20	+1.0	+32	+52	+10	+26	63	616	-

**SERVICE: EXPOSED FROM APRIL 1 TO JULY 30 TO SUNSET ATTRACTION 6W.**

A real deep bodied April yearling sired by the Grand Champion Bull 2005 RAWF. Her mother was also a champ at the RAWF in 2002.

HFI NORTHEASTERN 7R - SIRE OF LOT 51

## SUNSET ERICA 4X

**LOT 52**

SUF 4X JANUARY 07 2010 APPLIED FOR

SITZ TRAVELER 8180 AMF NHF  
S A V FINAL ANSWER 0035 AMF NHF  
S A V EMULOUS 8145  
S: S A V PIONEER 7301 AMF NHF  
BOYD NEW DAY 8005 AMF NHF  
S A V BLACKBIRD 5297  
S A V BLACKBIRD 1082

IRONWOOD NEW DESIGN 022  
IRONWOOD NEW LEVEL AMF NHF  
WARDENS BLACKCAP 6148  
D: SUNSET ERICA 7U  
LEACHMAN RIGHT TIME AMF  
HAWTHORNE ERICA 15R  
J D ERICA 9K

SC	YG	BW	WW	YW	MILK	MAT	BW	WW	YW
-	-	-	-	-	-	-	87	-	-

Here is a real deep bodied heifer calf out of a really good Iron New Level two year old heifer. These Pioneer heifers are really showing there mark in the showing and in our pastures. A great heifer prospect.



**SUNSET BLACKCAP 13X**  
**SUF 13X JANUARY 28 2010 APPLIED FOR**

**LOT 53**

SITZ TRAVELER 8180 AMF NHF  
 S A V FINAL ANSWER 0035 AMF NHF  
 S A V EMULOUS 8145  
**S: S A V PIONEER 7301 AMF NHF**  
 BOYD NEW DAY 8005 AMF NHF  
 S A V BLACKBIRD 5297  
 S A V BLACKBIRD 1082

C A FUTURE DIRECTION 5321 NHC AMC  
 HFI NORTHEASTERN 7R AMF  
 HFI MISS MORRISON 11L  
**D: SUNSET BLACKCAP 13U**  
 BURNBRAE INDY 03F  
 GREEN FIELD BLACKCAP 19J  
 GREEN FIELD BLACKCAP I 2A

SC	YG	BW	WW	YW	MILK	MAT	BW	WW	YW
-	-	-	-	-	-	-	78	-	-

This eye appealing Pioneer heifer comes from a real nice two year who's sire was 2005 Grand Champion Bull at the Royal Winter Fair HFI North Eastern 7R. She will make another great heifer show prospect.



**TamBri Angus**

**BRIAN AND TAMMI RIBEY & FAMILY**  
 RR#5 Paisley, Ont. N0G 2N0  
 (519) 389-4329

Tambri Farms is located west of Paisley in Bruce County. Tambri Farms is owned and operated by Brian and Tammi Ribey with their children Steven and Kelsey. We run a herd of 40 brood cows. We are constantly striving to produce attractive and hard working cattle. All calves are performance tested. We use AI sires including SAV Net Worth, Sitz Dash, Bismark and performance tested walking bulls. We are delighted to be asked to consign to the Highlight Sale. Visitors are always welcome at Tambri. Stop by and see our herd.

**TAMBRI CATHY 5P**  
**TMJ 5P JANUARY 04 2004 #1223963**

**LOT 54**

EMULATION N BAR 5522  
 N BAR EMULATION EXT NHF AMF  
 N BAR PRIMROSE 2424  
**S: WHITESTONE WIDESPREAD MB NHF AMF**  
 D H D TRAVELER 6807 NHF AMF  
 M B RACHEL 2173  
 R R P RACHEL 6072

MINERT'S FORTUNE 2000 NHF AMF  
 HARRON HULK 15G  
 BRANTNOR'S ERROLLINE 1W  
**D: TAMBRI HULK CATHY 5J**  
 RITO 4C13 OF 9M8 RITO 1B2  
 TAMBRI CONNIE 2G  
 NOBLEDEEN BLACK BEAUTY 11A

SC	YG	BW	WW	YW	MILK	MAT	BW	WW	YW
-	+31	+2.6	+40	+71	+7	+27	73	620	-

**SERVICE: A.I. ON APRIL 9 TO SAV NET WORTH 4200.**  
**SAFE TO A.I. DATE.**

Here is a Widespread daughter that won't disappoint! She is really deep bodied with a good udder. She was bred on April 9, 2010 to SAV Net Worth and is examined safe in calf.



**TAMBRI CATHY 5P - LOT 54**

**TAMBRI CATHY 11X**  
**TMJ 11X JANUARY 16 2010 #1546285**  
**S: W C C ADVENTURE S212 NHF AMF**

**LOT 54A**

SC	YG	BW	WW	YW	MILK	MAT	BW	WW	YW
-	+35	+3.8	+47	+82	+16	+39	78	-	-

11X is going to be a thick one, just like her momma. She is sired by WCC Adventure, the 2008 National Champion bull.



**TAMBRI CATHY 11X - LOT 54A**

# Timber Trail Angus

DOUG FISCHER  
Richmond, Ont. K0A 2Z0  
(613) 298-3146

This year again we have brought our best town. 1 cow calf pair, bred heifer and an outstanding open heifer to offer. Come by for a visit to the farm and see these females and the rest of the herd.

## TIMBER TRAIL 7T

TW TMBR 7T FEBRUARY 26 2007 #1415795

**LOT 55**

B/R NEW DESIGN 036 NHF AMF  
B/R NEW DESIGN 323  
B/R RUBY OF TIFFANY 155  
S: P V F NEW HORIZON 001 NHF AMF  
HYLINE TRAVEL AGENT NHF AMF  
HYLINE ELLEN 410  
HYLINE ELLEN 9062

C A FUTURE DIRECTION 5321 NHC AMC  
CLOVER LANE KILGOUR 2K  
CCCC MISS RIGHT TIME 4F  
D: SSSG NICKY  
BON VIEW EMULATION EXT 473 NHF AMF  
TENDER FOOT 1J  
CCCC BLACKDALE 56G



TIMBER TRAIL 7T - LOT 55  
WITH HER CALF - LOT 55A

SC	YG	BW	WW	YW	MILK	MAT	BW	WW	YW
-	-	-	-	-	-	-	-	-	-

SERVICE: EXPOSED FROM MAY 1 TO JULY 1 TO SUNSET GRID 5W.  
DUE MARCH 2011.

This New Horizon daughter traces back to EXT (the Female Maker) on the dam side and B/R New Design 036 on the sire side. She has a very stylish heifer calf with eye appeal and thickness at foot. She is bred to Sunset Grid 5W who was Grand Champion at South Mountain Fair 2010.

## LOT 55A

## TIMBER TRAIL NEW HORIZON 12X

TMBR 12X APRIL 2 2010 #122236

S: TMBR NETWORKTH'S UNDENIABLE

SC	YG	BW	WW	YW	MILK	MAT	BW	WW	YW
-	-	-	-	-	-	-	80	-	-



TIMBER TRAIL JESTRESS 6W - LOT 56

## TIMBER TRAIL JESTRESS 6W

**LOT 56**

TMBR 6W FEBRUARY 18 2009 #1543408

SITZ TRAVELER 8180 NHF AMF  
S A V 8180 TRAVELER 004 NHF AMF  
BOYD FOREVER LADY 8003  
S: S A V MASTERPIECE 5289  
LEACHMAN RIGHT TIME AMF  
S A V QUEEN 8301  
S A V STAR QUEEN 1780

B/R NEW DESIGN 323  
P V F NEW HORIZON 001 NHF AMF  
HYLINE ELLEN 410  
D: TIMBER TRAIL JESTRESS HORIZON  
SITZ ALLIANCE 6595 NHF AMF  
SANE 6595 JESTRESS 127N  
LSF DIR QUEEN JESTRESS

SC	YG	BW	WW	YW	MILK	MAT	BW	WW	YW
-	-	-	-	-	-	-	65	-	-

SERVICE: EXPOSED FROM MAY 1 TO JULY 1 TO SUNSET GRID 5W.

Top end genetics available here. She has a real future as a productive brood cow.



XCEL BARBIE 102X - LOT 57

## XCEL BARBIE 102X

XCEL 102X JANUARY 08 2010 #1553420

**LOT 57**

O C C DOCTOR 940D  
O C C GENESIS 872G  
BLACKBIRD OF R R 1204  
S: DUFF NEW ATTRACTION 6110  
O C C ANCHOR 771A  
O C C DIXIE ERICA 814G  
O C C DIXIE ERICA 764C

G D A R ROYCE 131  
STEVENSON ROYCE 741C NHF  
AHLGRENS ESTELLA 2758 E T E  
D: CURRAGHDALE BARBARA 19M  
GINGER HILL BOSS 150 HIC  
CCCC GINGER 1F  
CCCC BARBARA 3C

SC	YG	BW	WW	YW	MILK	MAT	BW	WW	YW
-	-	-	-	-	-	-	73	-	-

Check out this beauty! Eye appeal, thickness, depth of body and spring of rib. She has it all! Halter Broke and shows like a dream.

# Tullamore Angus

BILL & SYLVIA JACKSON & FAMILY  
12201 Torban Road Caledon East, Ont. L7C 2T4  
(905) 843-1236

Tullamore Angus is a third generation family operation established in 1923. The farm now consists of some 400 acres entirely in hay and pasture for the maintenance of an Angus herd consisting of 120 cows and heifers. Call or stop in for a visit anytime.



## BEA OF TULLAMORE 14W

**LOT 58**

GWJ 14W JANUARY 09 2009 #1521983

CONNEALY FOREFRONT NHF AMF  
TC FREEDOM 104 NHF AMF  
T C RUBY 9095  
S: SOUTHLAND FULL THROTTLE 15R  
DMM FLEX 6L  
SOUTHLAND DUCHESS 15N  
OMEGA FRENCH DUCHESS

BAND 234 OF IDEAL 3163  
Q A S TRAVELER 23-4 NHF AMF  
Q A S BLACKBIRD EVE 601 1  
D: DIAMOND D BEA 221J  
BLACK MEADOWS CASEY 25B  
DIAMOND D BEA 121E  
BLACK VELVET BEA 21A

SC	YG	BW	WW	YW	MILK	MAT	BW	WW	YW
-	+30	+2.9	+29	+59	+23	+38	78	472	-

**SERVICE: A.I. ON MAY 5 TO SITZ DASH 10277. EXPOSED FROM JUNE 1 TO JULY 30 TO CJ FREEDOM 212U.**

An excellent bred heifer by Southland Full Throttle 5R who has bred very well here at Tullamore. Southland Full Throttle 15R was Jr. & Reserve Grand Champion Bull at the 2006 NABC and also Jr. Champion Bull at the 2006 RWF. The dam of Bea 14W stood 3rd in a strong class at the 2008 Nation Angus at the Royal being sired by the popular QAS Traveler 23-4.



## PRIDE OF TULLAMORE 27W

**LOT 59**

GWJ 27W JANUARY 16 2009 #1522036

G D A R TRAVELER 71 NHF AMF  
SITZ TRAVELER 8180 NHF AMF  
SITZ EVERELDA ENTENSE 1137  
S: S A V FINAL ANSWER 0035 NHF AMF  
BON VIEW BANDO 598 AMF  
S A V EMULOUS 8145  
S A V SKY EMULOUS 2124

S A V 8180 TRAVELER 004 NHF AMF  
S A V NET WORTH 4200 NHF AMF  
S A V MAY 2410  
D: J L PRIDE 07139  
A J C H A F TRAVELER 01L  
YOUNG DALE PRIDE 65P  
YOUNG DALE PRIDE 40G

SC	YG	BW	WW	YW	MILK	MAT	BW	WW	YW
-	+47	+1.5	+55	+102	+21	+49	62	494	-

**SERVICE: A.I. ON MAY 5 TO SITZ DASH 10277. EXPOSED FROM JUNE 1 TO JULY 30 TO CJ FREEDOM 212U.**

This is a moderate framed bred heifer with an outstanding pedigree sired by the popular Final Answer and her dam from Johnson Livestock in Sask sired by Net Worth. CJ Freedom 212U is a son of TC Freedom 104 who stood 3rd in class at the 2009 World Angus Forum.

**LOT 60**

## ALLEGRA OF TULLAMORE 40W

GWJ 40W JANUARY 28 2009 #1521974

CONNEALY FOREFRONT NHF AMF  
TC FREEDOM 104 NHF AMF  
T C RUBY 9095  
S: SOUTHLAND FULL THROTTLE 15R  
DMM FLEX 6L  
SOUTHLAND DUCHESS 15N  
OMEGA FRENCH DUCHESS

DA ES RO CASEY 629  
YOUNG DALE BEN CASEY 15B  
YOUNG DALE KRISTINA 71Z  
D: ALLEGRA OF TULLAMORE 54G  
S C R LONE STAR 411  
DRYNOCH ALLEGRA 10X  
PROSPECT ALLEGRA 25S

SC	YG	BW	WW	YW	MILK	MAT	BW	WW	YW
-	+34	+5.0	+37	+71	+22	+41	82	535	-

**SERVICE: A.I. ON MAY 5 TO SITZ DASH 10277. EXPOSED FROM JUNE 1 TO JULY 30 TO CJ FREEDOM 212U.**

Allegra 40W is a larger framed bred heifer by Southland Full Throttle 15R, the 2006 & 2007 Ontario Show Bull of the Year. This heifer will go on to becoming an outstanding cow.



## LOT 61

### COUNTESS OF TULLAMORE 50W

GWJ 50W FEBRUARY 05 2009 #1522024

GREENS MARSHALL  
ALLENCROFT MARSHALL 04 154N  
ALLENCROFT JENNY 01 131H  
S: ALLENCROFT MARSHALL 03 37S  
ALLENCROFT POWER DRIVE 01 73B  
ALLENCROFT MANDY 01 135H  
ALLENCROFT MANDY 01 104F

HF MOST WANTED 46H  
HF CONTROLLER 35L  
HF LUCY 84J  
D: LLB COUNTESS 365R  
LLB BRUTE  
DOUBLE J COUNTESS 365Z  
DOUBLE J COUNTESS 209U

SC	YG	BW	WW	YW	MILK	MAT	BW	WW	YW
-	+25	+3.7	+45	+70	+12	+35	84	593	-

SERVICE: A.I. ON MAY 5 TO SITZ DASH 10277. EXPOSED FROM JUNE 1 TO JULY 30 TO CJ FREEDOM 212U.

Countess 50W is a very stylish, long bodied heifer that came to Tullamore in dam from the JPD Dispersal. Her dam, bred at LLB in Alberta, has another heifer calf here at Tullamore in 2010 and is doing an outstanding job.



## Whiskey Lane Livestock

SCOTT, PAULA & JASON CORNISH  
2295 Highway #7 Indian River  
Ontario K0L 2B0 (705) 295-2925

Whiskey Lane Livestock was established in 2001 when Scott and I purchased 150 acre farm in Indian River. Prior to that, since 1992 I had been raising Angus cattle and Scott grew up on a Hereford farm. We now run 40 cows with a 50/50 split of Angus and Hereford cows. Our program is based on producing functional, moderate framed cattle that excel in maternal ability and milk. Showing cattle is our passion and we use that activity to market our livestock, travel and create great friendships. Visitors are always welcome.



### WLL MARY 3W

WLL 3W JANUARY 05 2009 #1486843

D H D TRAVELER 6807 NHF AMF  
O C C EMBLAZON 854E NHF AMF  
DIXIE ERICA OF C H 1019  
S: B C C-J C L EMBLAZON 038-287  
ROCKN D AMBUSH 1531 NHF AMF  
B C C 1531 ELDORENE 826-038  
KAPP ELDORENE ERICA ND 826

VERMILION DATELINE 7078 NHF AMF  
EARLEY DATELINE 2M  
BROCKHILL BLACK DIAMOND 9G  
D: WLL MARY 1T  
GLEN ISLAY EMBLEM 8F  
J P D BLACKCAP MARY 17K  
J P D TRICIA MARY 28D

SC	YG	BW	WW	YW	MILK	MAT	BW	WW	YW
-	+41	+4.3	+44	+85	+7	+28	72	-	-

SERVICE: A.I. ON APRIL 10 TO B/R NEW FRONTIER 095.

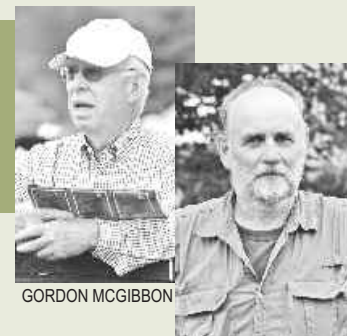
The quality runs deep in this eye appealing bred yearling. Mary is a fancy fronted, deep sided, thick made Emblazon daughter that is sure to add value to any herd. She is carrying a New Frontier 095 service and is due to calve the middle of January.

## LOT 62

## Wilgor Farms

GORDON MCGIBBON (450) 562-6313  
MICHAEL WILSON (Farm Manager) (450) 562-5112  
8426, Chemin Des Sources Mirabel, PQ. J7N 3B1

Wilgor Farms have been prominent Hereford breeders for over 40 years. We are now putting together a select Angus cow herd to provide the discriminate buyer with top quality breeding stock. Stop by for a visit anytime.



GORDON MCGIBBON

MICHAEL WILSON

# SELLING CHOICE - LOTS 63 & 63A

TC FREEDOM 104 NHF AMF  
 HF FREE WHEELER 191N  
 DURALTA 14C ECHO 32E  
**S: WILGOR 8L TELSTAR 10T**  
 WHITE LAKE STARWALKER 8H  
 TINA OF TULLAMORE 8L  
 BURKHOLMES TINA 2H

BACK ROADS 1418 LEGEND 1582  
 LLB LEGEND 34K  
 MVF MAYFLOWER 30G  
**D: WILGOR K5 MARJ 34K 56M**  
 V N A R FAMOUS PLAYERS 53G  
 LOCUST GROVE MARJORIE K5  
 GREENHURST MARJORIE 46B

## WILGOR 56M WILMA 41W LOT 63

TW JJZ 41W MARCH 12 2009 #1518501

SC	YG	BW	WW	YW	MILK	MAT	BW	WW	YW
-	+35	+4.1	+40	+75	+12	+32	82	630	-

**SERVICE: EXPOSED FROM APRIL 23 TO JULY 16 TO WILGOR 1L WORLDWIDE 095 4W. OBSERVED BRED MAY 22.**

JJZ 41W & JJZ 42W are excellent twin daughters out of Wilgor K5 Mary 34K 56M, one of our very top producing cows. Maternal sisters have sold in the 2006, 2007 and 2008 Highlight Sales for \$2600, \$2000 & \$1900 respectively. These 2 bred heifers sell in calf to Wilgor 1L Worldwide 095 4W, who was the Reserve Grand Champion Bull at the 2009 Royal Winter Fair and is maturing into a tremendous yearling.

## WILGOR 56M WILLAMENA 42W LOT 63A

TW JJZ 42W MARCH 12 2009 #1526520

SC	YG	BW	WW	YW	MILK	MAT	BW	WW	YW
-	+35	+4.1	+40	+75	+12	+32	80	652	-

**SERVICE: EXPOSED FROM APRIL 23 TO JULY 16 TO WILGOR 1L WORLDWIDE 095 4W. OBSERVED BRED MAY 9.**

WILGOR 56M WILMA 41W - LOT 63



WILGOR 56M WILLAMENA 42W - LOT 63A

## WIL-DORR 104P WILMA 55W LOT 64

MDW 55W APRIL 28 2009 #1526935

TC FREEDOM 104 NHF AMF  
 HF FREE WHEELER 191N  
 DURALTA 14C ECHO 32E  
**S: WILGOR 8L TELSTAR 10T**  
 WHITE LAKE STARWALKER 8H  
 TINA OF TULLAMORE 8L  
 BURKHOLMES TINA 2H

DWAJO CHIEF 92E  
 CRESCENT CREEK CHIEF 72L  
 LAZY J BARDELLA LASS 3D  
**D: CRESCENT CREEK BONNIE 104P**  
 ROYLE-HEAD RIGHT TIME 27E  
 LLB BONNIE 236L  
 DOUBLE J BONNIE 354D

SC	YG	BW	WW	YW	MILK	MAT	BW	WW	YW
-	+31	+5.7	+39	+70	+15	+34	93	748	994

**SERVICE: EXPOSED FROM APRIL 23 TO JULY 16 TO WILGOR 1L WORLDWIDE 095 4W. OBSERVED BRED MAY 22.**

This very feminine daughter by Wilgor 8L Telestar 10T and out of the good breeding Crescent Creek cow 104P will be a great addition to any herd. A maternal sister sold to Tullamore Angus for \$2900 in the 2007 Sale and was later shown to the top of her class at the Royal, a maternal brother purchased by Bellstar in 2008 was the highest indexing bull at the Douglas Test Station. Again bred to the Champion Wilgor 1L Worldwide 095 4W bull.



# WIL-DORR 404P LADY 1X

**LOT 65**

MDW 1X JANUARY 03 2010 #1576776

C H STACKER 7040  
 KRUGERRAND OF DONAMERE 490 NHF AMF  
 DONAMERE BACHEL BEAUTY 288  
**S: F A R KRUGERRAND 410H NHF AMF**  
 G M A R HI SPADE 039  
 F A R ERIANNA 286F  
 F A R ERIANNA 481D

WILLABAR SPECIALIST 141H  
 RCL RIBSTONE SPECIAL LINK 15M  
 LOR WIN IDELETTE 22D  
**D: BLACK WOLF ROSE LADY 404P**  
 TRAILVIEW TESTIMONY 9049  
 GH TESSIE ROSE 319M  
 GH BLACK ROSE 83H

SC	YG	BW	WW	YW	MILK	MAT	BW	WW	YW
-	+38	+1.2	+41	+79	+10	+31	90	-	-

A truly great calf, the dam of this calf 404P(A front pasture cow in her own right) consistently brings in our top heifer calf each year and 1X's maternal sister, Wil-Dorr 404P Tiffany 9T sold in the 2007 Highlight Sale to Soo Line Cattle Co. for \$3900 and is the dam of the Lot 6 bull in Soo Line's Bull Sale this past spring. She is presently in Soo Line's Donor Program. Her 2008 calf sold to Reynald Noiseux and was 2 Year Old Champion Female with her heifer calf at this year's Angus Showdown.



**WIL-DORR 404P TIFFANY 9T**  
 (MATERNAL SISTER TO LOT 65,  
 PICTURED HERE AS A 2 YEAR OLD)

# WILGOR 1P UNIE 2X

**LOT 66**

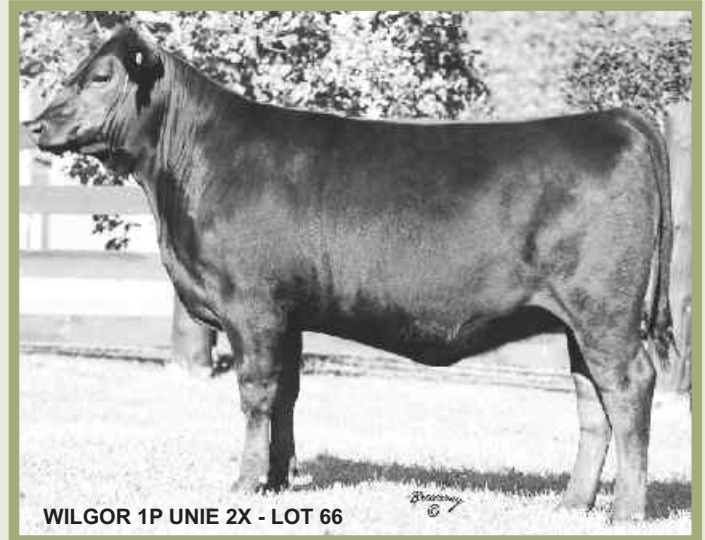
JJZ 2X JANUARY 10 2010 #1576757

SITZ TRAVELER 8180 NHF AMF  
 S A V 8180 TRAVELER 004 NHF AMF  
 BOYD FOREVER LADY 8003  
**S: S A V 004 DENSITY 4336 NHF AMF**  
 LEACHMAN RIGHT TIME AMF  
 S A V MAY 7238  
 S A R PROSPECTOR MAY 9124

SITZ TRAVELER 8180 NHF AMF  
 SITZ ALLIANCE 6595 NHF AMF  
 SITZ BARBARAMERE JET 2698  
**D: WILGOR 5K POLLY 1P**  
 V N A R FAMOUS PLAYERS 53G  
 LOCUST GROVE MARJORIE K5  
 GREENHURST MARJORIE 46B

SC	YG	BW	WW	YW	MILK	MAT	BW	WW	YW
-	+38	+3.4	+46	+84	+20	+43	88	-	-

A real stout Density daughter that will make a tremendous brood cow. Her Sitz Alliance 6595 Dam is a standout in our pasture. Her 2009 calf sold to Luc Noiseux and 2006 heifer brought \$2400.



WILGOR 1P UNIE 2X - LOT 66



WILGOR 9S EILEEN 3X - LOT 67

# WILGOR 9S EILEEN 3X

**LOT 67**

JJZ 3X JANUARY 10 2010 #1576760

CONNEALY FOREFRONT NHF AMF  
 TC FREEDOM 104 NHF AMF  
 T C RUBY 9095  
**S: TC STOUT 407 NHF AMF**  
 VERMILION DATELINE 7078 NHF AMF  
 TC PRIDE 2053  
 TC PRIDE 5045

B/R NEW DESIGN 036 NHF AMF  
 B/R NEW FRONTIER 095 NHF AMF  
 WHITE FENCE PRIDE H1  
**D: WILGOR 1L EILEEN BAR 9S**  
 KILMAURS DAQUANTAE 1H  
 KILMAURS EILEEN BAR 1L  
 GEIS EILEEN BAR 47'99

SC	YG	BW	WW	YW	MILK	MAT	BW	WW	YW
-	+40	+4.1	+51	+91	+23	+48	85	-	-

A TC Stout 407 daughter out of a great young cow. 9S is a maternal sister to Wilgor Worldwide 4W and her granddam 1L is the top producing cow at Wilgor.

**WIL-DORR 12T LADY-E 8X** **LOT 68**  
**MDW 8X JANUARY 15 2010 #1576779**

SITZ TRAVELER 8180 NHF AMF  
 S A V 8180 TRAVELER 004 NHF AMF  
 BOYD FOREVER LADY 8003  
**S: S A V NET WORTH 4200 NHF AMF**  
 S A F 598 BANDO 5175 AMF  
 S A V MAY 2410  
 S A V MAY 6269

EXAR SUDDEN IMPACT 1537 NHF AMF  
 PLAINVIEW SUDDEN IMPACT D27  
 PLAINVIEW PROUD LASSIE 13A  
**D: ANGUS GLEN LADY ENGINEER 12T**  
 R R SCOTCHCAP 9440 NHF AMF  
 ANGUS GLEN LADY ENGINEER 2N  
 LINMAR LADY ENGINEER 8E

SC	YG	BW	WW	YW	MILK	MAT	BW	WW	YW
-	+41	+3.6	+49	+90	+23	+48	98	-	-

8X will make a front pasture addition to anyone's herd. A good profile, thick butted, strong spined with good feet and legs. The dam of 8X was purchased in the 2007 Highlight Sale from Angus Glen Farms.



**WILGOR W 816U** **LOT 69**  
**LADY TIPTOP 13X**  
**JJZ 13X JANUARY 29 2010 #1576769**

SITZ TRAVELER 8180 NHF AMF  
 S A V 8180 TRAVELER 004 NHF AMF  
 BOYD FOREVER LADY 8003  
**S: S A V NET WORTH 4200 NHF AMF**  
 S A F 598 BANDO 5175 AMF  
 S A V MAY 2410  
 S A V MAY 6269

LLB NEW FRONTIER 81N  
 NORSEMAN FRONTIER 5'05  
 LLB NELLIE PRIDE 334M  
**D: LLB LADY TIPTOP 816U**  
 ASPELUND DIRK 64H  
 LLB LADY TIPTOP 91K  
 DOUBLE J LADY TIPTOP 430Y

SC	YG	BW	WW	YW	MILK	MAT	BW	WW	YW
-	+40	+4.8	+46	+86	+17	+40	98	-	-

A very attractive Net Worth daughter out of a front pasture 2 year old from LLB Angus. 13X would make a very nice junior project.



**Worth-Mor Cattle Co.**

**THE PETHERICK'S & GLOVER'S**  
 950 Cty. Rd. #8, Campbellford, Ont. K0K 1L0  
 Kyle's Cell: (705) 768-3560 • Hm: (705) 653-4597

Once again we are excited to be consigning to the Highlight Sale. We feel we have selected three females from the top end of our herd that will fit well into anyone's breeding program. Feel free to stop in at the farm or call anytime about our consignments. Visitor's always welcome!



**WMC DELIA 7W** **LOT 70**  
**WMC 7W JANUARY 03 2009 #1487803**

SITZ TRAVELER 8180 NHF AMF  
 SITZ ALLIANCE 6595 NHF AMF  
 SITZ BARBARAMERE JET 2698  
**S: K C F BENNETT TOTAL NHF AMF**  
 N BAR EMULATION EXT NHF AMF  
 EXT OF CONANGA 6790  
 LADY ENCHANTRESS OF CONANGA

G T MAXIMUM NHF AMF  
 BASIN MAX 602C NHF AMF  
 BASIN ELINE ERICA 315U  
**D: BENLOCK DELIA 37N**  
 JOHNSTON HI SPADE 484Z  
 BENLOCK DELIA 45D  
 HEATHERBROOK DELIA 27'88

SC	YG	BW	WW	YW	MILK	MAT	BW	WW	YW
-	+36	+2.4	+42	+78	+15	+36	85	586	803

**SERVICE: A.I. ON APRIL 2 TO SAV BISMARCK 5682.**

Delia 7W is a long sided heifer with tons of power and style. Delia's dam was purchased at this sale three years ago from Gary Harron and she hasn't let us down as you can see by our next consignment as well. 7W comes bred to Genex's next great sire SAV Bismarck for an early January calf. Don't miss this great opportunity on sale day!



## WMC DELIA 18X

**LOT 71**

WMC 18X FEBRUARY 02 2010 #1548653

LEACHMAN RIGHT TIME AMF  
 HYLINE RIGHT TIME 338 NHF AMF  
 HYLINE PRIDE 265  
**S: ANGUS GLEN 338 RIGHT TIME 1T**  
 JL B EXACTO 416 NHF AMF  
 ANGUS GLEN SABINA 4L  
 4 G PRIDE 926

G T MAXIMUM NHF AMF  
 BASIN MAX 602C NHF AMF  
 BASIN ELINE ERICA 315U  
**D: BENLOCK DELIA 37N**  
 JOHNSTON HI SPADE 484Z  
 BENLOCK DELIA 45D  
 HEATHERBROOK DELIA 27'88

SC	YG	BW	WW	YW	MILK	MAT	BW	WW	YW
-	+36	+2.4	+40	+76	+16	+36	74	-	-

Delia 18X is our pick of the 2010 heifer calf crop. Delia 18X is the complete package, quiet temperament, style and thickness throughout - she has it all! Because we love this heifer so much we are willing to take 18X home after the sale and show her at the Royal Winter Fair in November at our expense. Don't miss Delia 18X who will make a great show heifer in 2011!



## WMC KATINKA 5X

**LOT 72**

WMC 5X JANUARY 06 2010 #1548648

S A V 8180 TRAVELER 004 NHF AMF  
 S A V PAYROLL 5281 NHF AMF  
 S A V BESSIE HEIRESS 1184  
**S: PVF ALL PAYDAY 729 NHF AMF**  
 P V F NEW HORIZON 001 NHF AMF  
 P V F BLACKBIRD 201  
 P V F BLACKBIRD 020

G D A R TRAVELER 71 NHF AMF  
 SITZ TRAVELER 8180 NHF AMF  
 SITZ EVERELDA ENTENSE 1137  
**D: WATCHWIND KATINKA 05**  
 PARAMONT AMBUSH 2172 NHF AMF  
 HEATHCOTE KATINKA 357  
 HEATHCOTE KATINKA 355

SC	YG	BW	WW	YW	MILK	MAT	BW	WW	YW
-	+44	+1.7	+50	+94	+29	+54	82	-	-

Katinka 5X will be one of the first Payday heifer calves to sell in Ontario this year. This heifer comes from our Katinka family who have proven themselves time and time again. 5X is loaded with power from front to back, deep sided and pretty fronted. 5X will make an excellent front pasture cow to build a herd around!



# NOTES



# Donations

Dodds & Erwin Ltd Perth ON. – SHUR-GAIN  
Perth Veterinary Service – Steve Scott  
Eastern Breeders Inc. – 5 doses of 59AN 1156 GRID TOPPER  
Select Sires – 5 doses of Angus Semen – Dave Massey  
Genex – 5 doses of any Angus Bull in the catalogue  
ABS – Semen – Don Hess  
Generations - 5 Doses of SITZ DASH – Eric Rinker  
Pifzer – 2.5 Litres of Dectomax – Dennis Eagles

## TERMS & CONDITIONS

- 1. TERMS:** Unless otherwise previously arranged with an individual consignor, terms of this sale are cash payable in Canadian funds at the prevailing rate of exchange on the day of sale. All cattle may be held until the selling agent is satisfied that suitable arrangements for payment are made.
- In the case of illness, a veterinarian will be called by the Sales Committee if deemed necessary, but any expense noted will be the responsibility of the CONSIGNOR until the animal is sold and the PURCHASER thereafter.
- As soon as an animal is sold, it becomes the responsibility of the purchaser.
- 4. BIDS:** Every animal entering the sale ring will be sold to the highest bidder. There will be no by-bidding by the owner or anyone authorized by him, however, the owner will be permitted one protective bid.
- 5. DISPUTES:** In case of disputes, bidding will be reopened between the parties involved. If no further bid is made, the buyer will be the person from whom the auctioneer accepted the last bid. The auctioneer's decision in such matters will be final.
- 6. ANNOUNCEMENTS:** Errors discovered in the catalogue will be corrected by announcements from the Auction Stand at sale time and such corrections will take precedence over the printed matter in the catalogue.
- 7. CERTIFICATE OF REGISTRY:** A CANADIAN certificate of registry duly transferred will be furnished to the buyer for each animal after settlement is made.
- 8. SHIPPING:** Assistance will be given in making shipment after the sale, but no risk is assumed by the Canadian Red Angus Promotion Society, Sales Manager, or the Seller. Expenses incurred are the responsibility of the purchaser. Purchasers are required to furnish shipping instructions when making settlement.
- 9. BREEDERS GUARANTEE:** a) All animals sold are guaranteed

- breeders. b) All bred females have been declared safe in calf by a qualified veterinarian. Pregnant females are guaranteed pregnant a minimum of ninety (90) days. c) All mature females raised a calf in this year. d) All calendar year heifers are guaranteed open at time of sale. Any animal that has not proven itself a breeder within six months after the date of sale, if, in healthy condition, may be returned to seller at buyers expense. The seller reserves the privilege of trying for a period of six months to prove the animal a breeder. The seller, at his option, may either return the purchase price to the buyer or replace the animal with another of equal value in full settlement and satisfaction of ALL claims. Any complaints regarding fertility of any animal in this sale shall be directed to the Canadian Red Angus Promotion Society and the Contributor. All complaints regarding breeding difficulties must be reported in writing by the buyer to the seller within the time specified above and any animal returned must be free from disease and in good health. Any calendar year heifer shown and or flushed by the purchaser is no longer guaranteed a breeder under this paragraph #9.
- 10. ACCIDENTS:** Although every precaution will be taken to protect the safety and comfort of the buyers, neither the sponsoring association, Sales Manager, nor any owner assumes any responsibility in this matter and disclaims any liability, legal or otherwise in the event of accident or loss of property.
- 11. LIABILITY:** The Canadian Red Angus Promotion Society and the Sale Manager are acting as agents only and assume no responsibility for representations made by the Seller. Purchasers must look to the seller for fulfillment of all guarantees and representations made by the seller.
- 12. INSURANCE:** Livestock Insurance and or transit insurance will be available.
- 13. TESTING:** All cattle will be held at seller's expense until all necessary health requirements are met.