

56 BELL BLACK LUCY 5R

Female NBK 5R January 31 2005 1259407



STEVENSON ROYCE 741C NHF CAF
 STEVENSON BRUNO 561G NHF CAF
 JRS ENCHANTRESS 16A
 Sire: BELL 561G BRUNO 11L
 ONEILLS RENOVATOR
 BELL BLACKBIRD 2C
 BELL BLACKBIRD 1A

CENTURY TOUCHSTONE 131
 BELL TOUCHSTONE 2D
 BELL BLACKLASS 16Z
 Dam: BELL BLACK LUCY 29H
 V D A R NEW TREND 315 NHF AMF CAF
 BELL BLACK LUCY 4A
 BELL BLACK LUCY 11U

A very strong pedigree with Bruno, Touchstone and New Trend 31S close up in her tabulation. 5R's only bull calf was our high selling bull in the 2008 Triple A Sale to Glen Gabel. Her first daughter went to Russia and two daughters are being retained in the herd.

P.E. May 7 - June 20 to Hilow Titan 13P. Preg checked 4 1/2 months October 28.

EPDs:
 BW:+2.9
 WW:+38
 YW:+62
 Milk:+23
 TM:+42
 SC:+0.47
 YG:+24
 CED:-1.0
 CEM:+3.0
 Marb:+0.18
 REA:-0.16
 FAT:-.001

BW: 84 lbs. 205 wt: 706 lbs.

CANADIAN NATIONAL LIVE STOCK RECORDS
 CANADIAN ABERDEEN ANGUS ASSOCIATION
Incorporated under the Live Stock Pedigree Act of the Department of Agriculture, Ottawa, Canada.

CERTIFIED COPY OF PEDIGREE RECORDED IN THE CANADIAN ABERDEEN ANGUS HERD BOOK.
If a change of ownership occurs, this certificate with duplicates for transfer and transfer fee should immediately be forwarded to Record Office.

H. of A. No. _____

CRAVEN'S REVOLUTION L M -64923- Female Importation _____

Black, born March 12th, 1941, bred by Kenneth Holt, Craven, Sask.
 Transfer on other side.

DAM

Lady Marshal 5th -48270-	SIRE
Lady Marshal -42161-	Glenslg Cap Revolution -52699-
Lady of McLean -11723-	Prairie Range Marshal -39005-
Lady Victoria -3528-	Prairie Range Marshal -39006-
Lady Downing -2460-	Major of Wester Fowls -5651-
Fair Lady's Darling -1475-	Aguinaldo -1474-
Fair Lady of Simoon -235-	Aguinaldo -1474-
Fair Lady of Collithie -261- (4525)	College Home -950-
Fashion (982)	Julius of Kinnoul Park -256-
Lady Fanny (971)	Malcolm of Westertown (1457)
Etc.	Trojan (402)
	King Charles (236)

Typing by JAM 544937 OTTAWA, CANADA June 26th, 1941.
 FEE \$1.50

The above pedigree is on record in the Canadian Aberdeen Angus Herd Book.

Approved *Geo. R. Holt*
 For Minister of Agriculture.

CANADIAN NATIONAL LIVE STOCK RECORDS
 CANADIAN ABERDEEN ANGUS ASSOCIATION
Incorporated under the Live Stock Pedigree Act of the Department of Agriculture, Ottawa, Canada.

CERTIFIED COPY OF PEDIGREE RECORDED IN THE CANADIAN ABERDEEN ANGUS HERD BOOK.
If a change of ownership occurs, this certificate with duplicates for transfer and transfer fee should immediately be forwarded to Record Office.

H. of A. No. _____

CRAVEN'S REVOLUTION GIFT -65405- Male Importation _____
 Ear tag 25 Kenneth Holt Craven

Black, born January 15th, 1941, bred by Kenneth Holt, Craven, Sask.;
 2nd owners, June 5th, 1941, Bell Brothers, Keystown, Sask.

DAM

Craven's Beauty -58774-	SIRE
Craven's Joy -57598-	Glenslg Cap Revolution -52699-
Heroine of Buena Vista -45876-	Craven's Gift -55970-
Fride of Buena Vista -41633-	Prince Val of Brook -49031-
Tootsie of Buena Vista -38319-	Cresser of Buena Vista -41644-
Stella of Buena Vista -34179-	Craigie Ben Thickett -27107-
Glengyis Stella -9147-	Donald Dhu of Tiree -21139-
Lucretia of Glencarnock -6021-	Donald Dhu of Tiree -21139-
Lucretia of Dalmeny 9th -4023- (44422)	Black Ivy -6008-
Lucretia of Dalmeny 7th (36246)	Golden Gleam -3111-
Etc.	Clondyke of the Burn -1261- (16748)

Typing by LB 547845 OTTAWA, CANADA September 30th, 1941.
 FEE \$1.50 Transfer 50¢

The above pedigree is on record in the Canadian Aberdeen Angus Herd Book.

Approved *Geo. R. Thomas*
 For Minister of Agriculture.

Here are pedigrees from the first bull and one of the first females that Dad and Uncle Cecil purchased when they started in the purebred business. They both came from Ken Holt at Craven. I didn't ever get the chance to meet the Holt's, which I really regret as I understand that is who I was named after. The Lucy's are descendents of this female.

B
L
A
C
K

L
U
C
Y

B
L
A
C
K

L
U
C
Y



57 BELL EUGENIE ERICA 26W

Female NBK 26W February 22 2009 1493377

Sire: **BELL 9074 BANDO 19T**
 S A F 598 BANDO 5175 AMF CAC
 LT 598 BANDO 9074 NHF AMF CAF
 MILL COULEE BARBARA K 323
 CJD SCOTCHMAN 10K
 EASTONDALE BLACKBIRD 99'05
 EASTONDALE L7 BLACKBIRD 38'98

Dam: **BELL EUGENIE ERICA 53T**
 GDAR QUANTUM 963
 NORTHERN VIEW QUANTUM 86P
 CRESCENT CREEK BLACKBIRD 21J
 BELL 561G BRUNO 11L
 BELL EUGENIE ERICA 19R
 BELL EUGENIE ERICA 15M

EPDs:
 BW:+0.1
 WW:+39
 YW:+69
 Milk:+22
 TM:+42
 YG:+30
 CED:+6.0
 CEM:+9.0
 Marb:+0.25
 REA:-0.15
 FAT:+.005

BW: 71 lbs. 205 wt: 682 lbs. 365 wt: 926 lbs.

A long sided feminine heifer sired by a LT Bando 9074 son. Her dam is an excellent Quantum 86P daughter.

P.E. May 14 - September 26 to Bell Ribstone 53U. Preg checked 4 1/2 months October 28.

58 BELL QUEEN 43X

Female NBK 43X February 26 2010 1548913

Sire: **BELL NET RETURN 3U**
 S A V 8180 TRAVELER 004 NHF AMF CAF
 S A V NET WORTH 4200 NHF AMF CAF
 S A V MAY 2410
 LONE STAR ONLY PROFIT 1J
 BELL MS PRIDE 16L
 HOWE MS PRIDE 76J

Dam: **BELL QUEEN 13M**
 GARDENS FORTUNE 9213 S3 AMF
 STEVENSON FORTUNE 425C NHF AMF CAF
 J R S ENCHANTRESS 235Z
 HILOW ROCKET 41B
 HILOW QUEEN 43G
 PRWL QUEEN 25B

BW: 92 lbs.



We wanted to offer a heifer calf by each of our herd bulls. Queen 43X is a fancy, thick made daughter by Net Return 3U. Her dam is a top Stevenson Fortune 425C daughter.

Q
U
E
E
N

E
U
G
E
N
I
E
R
I
C
A



59 BELL EUGENIE ERICA 22W

Female NBK 22W February 20 2009 1493338

Sire: **HILOW TITAN 13P**
 CHICO HANNIBAL 43H
 ISLA BANK TITAN 148
 ISLA BANK PRIDE 11G
 PEAK DOT PROFIT 11C
 HILOW HEATHER 23E
 HILOW HEATHER 25W

Dam: **BELL EUGENIE ERICA 25M**
 R R SCOTCHCAP 9440 NHF AMF
 BAR DDJ 9440 FORECAST 7K
 ROSEGLEN ROYAL LADY 1C
 BELL STOCKADE 7G
 BELL EUGENIE ERICA 5K
 BELL EUGENIE ERICA 20F

EPDs:
 BW:+4.6
 WW:+41
 YW:+64
 Milk:+11
 TM:+32
 SC:+0.45
 YG:+23
 CED:-3.0
 CEM:+7.0
 Marb:+0.05
 REA:+0.03
 FAT:-.013

BW: 92 lbs. 205 wt: 684 lbs. 365 wt: 929 lbs.

22W's dam is an excellent producing cow. Her maternal grandsire came through the Northern Select Sale as the high selling bull calf.

P.E. May 14 - September 26 to Bell Ribstone 53U. Preg checked 4 1/2 months October 28.

60 BELL EUGENIE ERICA 2S

Female NBK 2S January 20 2006 1323587



A big, deep bodied Northern View Elixir 70P daughter. A yearling daughter was a high seller through the Triple A Sale to Glen Gabel.

P.E. May 8 - May 25 to Bell Net Return 3U - P.E. June 10 - September 26 to Bell Ribstone 53U. Preg checked 5 1/2 months October 28.

ANKONIAN ELIXIR 100
NORTHERN VIEW FLYING ELIXIR70M
CRESCENT CREEK RUTH 6F
Sire: NORTHERN VIEW ELIXIR 70P
JX RITO 2F
NORTHERN VIEW TIBBIE 73J
CRESCENT CREEK TIBBIE 129G

R R 9440 SCOTCH CAP 1483 NHF AMF CAF
E&B 1483 SCOTCHMAN 543
LADY SKYLAR B121
Dam: BELL EUGENIE ERICA 15M
BELL STOCKADE 7G
BELL EUGENIE ERICA 19J
BELL EUGENIE ERICA 20F

EPDs:
BW:+6.1
WW:+31
YW:+66
Milk:+12
TM:+28
SC:+0.06
YG:+35
CED:-8.0
CEM:+3.0
Marb:+0.13
REA:-0.11
FAT:+.028

BW: 90 lbs. 205 wt: 671 lbs. 365 wt: 902 lbs.

61 BELL EUGENIE ERICA 19R

Female NBK 19R February 22 2005 1272163



STEVENSON ROYCE 741C NHF CAF
STEVENSON BRUNO 561G NHF CAF
JRS ENCHANTRESS 16A
Sire: BELL 561G BRUNO 11L
ONEILLS RENOVATOR
BELL BLACKBIRD 2C
BELL BLACKBIRD 1A

R R 9440 SCOTCH CAP 1483 NHF AMF CAF
E&B 1483 SCOTCHMAN 543
LADY SKYLAR B121
Dam: BELL EUGENIE ERICA 15M
BELL STOCKADE 7G
BELL EUGENIE ERICA 19J
BELL EUGENIE ERICA 20F

EPDs:
BW:+4.1
WW:+30
YW:+54
Milk:+18
TM:+33
SC:+0.43
YG:+25
CED:-4.0
CEM:+4.0
Marb:+0.00
REA:-0.11
FAT:-.001

BW: 85 lbs. 205 wt: 650 lbs. 365 wt: 922 lbs.

The Eugenie Erica cow family came to us from Perryville Holdings through the old Tri-Plex Sale. A very solid cow line, easy doing cattle with calving ease. We have three daughters of 19R in the herd.

P.E. May 7 - June 20 to Hilow Titan 13P. Preg checked 5 months October 28.

EUGENIE ERICA

A**HF TIGER 5T**

Male HFDF 5T January 01 2007 1402252 NHF AMF



TC ADVANTAGE NHF AMF
 SANDY BAR ADVANTAGE 43M
 SANDY BAR JEMINA 44K

Sire: HF KODIAK 5R

VERMILION YELLOWSTONE NHF AMF
 WILBAR RUBY 955N
 WILBAR RUBY 161J

EPDs:

BW:-0.5

WW:+62

YW:+115

Milk:+22

TM:+53

SC:+0.59

YG:+52

CED:+9.0

CEM:+9.0

CONNEALY FOREFRONT NHF AMF
 TC FREEDOM 104 NHF AMF
 T C RUBY 9095

Dam: HF ECHO 84R

RIVERBEND POWERLINE 0050
 HFDF ECHO 6N
 HF ECHO 83J

BW: 76 lbs. 205 wt: 796 lbs. 365 wt: 1338 lbs.

½ interest sold at the CWA Masterpiece sale for \$50,000 to Ring Creek Farms. He is a Farmfair Champion bull, World Angus Forum Grand Champion & CWA Grand Champion. We have a HF Tiger 5T son entered with his mother MVF Tibbie 108U at Agribition. He is a long-spined calf with a great disposition.

B**S A V PIONEER 7301**

Male IMP 7301T February 27 2007 1481377 NHF AMF

G D A R TRAVELER 71 NHF AMF
 SITZ TRAVELER 8180 NHF AMF
 SITZ EVERELDA ENTENSE 1137

Sire: S A V FINAL ANSWER 0035 NHF AMF

BON VIEW BANDO 598 AMF
 S A V EMULOUS 8145
 S A V SKY EMULOUS 2124

A A R NEW TREND
 BOYD NEW DAY 8005 NHF AMF
 S V F FOREVER LADY 57D

Dam: S A V BLACKBIRD 5297

S A F 598 BANDO 5175 AMF
 S A V BLACKBIRD 1082
 S A V BLACKBID 4036

EPDs:

BW:+1.3

WW:+62

YW:+105

Milk:+28

SC:+1.63

CED:+10.0

CEM:+8.0

Marb:+0.47

REA:+0.58

FAT:+0.080



One of the most popular Genex sires. The high seller we purchased last year at the Valleyhills Dispersal was serviced to Pioneer. Definitely calving ease with lots of grow. The calf we got looks great.

C**NICHOLS STOUT T152**

Male IMP 152T March 27 2007 1539804 NHF AMF

GAR COMMITMENT AMF
 NICHOLS COMMITMENT K111
 NICHOLS BARBARAMERE D327

Sire: NICHOLS COMMITMENT M380

NICHOLS SUPER DUTY F253
 NICHOLS BLACK HEIRESS H295
 NICHOLS BLACK HEIRESS B382

B C C BUSHWACKER 41-93 NHF AMF
 NICHOLS BUSHWACKER K161 AMF
 NICHOLS BLACKBIRD Z54

Dam: NICHOLS LULA N77 NHF AMF

NICHOLS FORMULA H109
 NICHOLS LULA K387
 NICHOLS LULA H402 AMF



This bull offers a refreshing outcross genetic package. We have used Nichols genetics very successfully in the past. Nichols Supersystem R43 and Nichols Black Ink Y118 worked well on our cows. I will be very interested if you get a bull calf with one of these matings.

S
E
R
V
I
C
E

S
I
R
E
S

D HILOW RIGHT TIME 38F

Male HTD 38F February 03 1996 851801

EMULATION N BAR 5522
N BAR EMULATION EXT NHF AMF
N BAR PRIMROSE 2424
Sire: LEACHMAN RIGHT TIME AMF
TEHAMA BANDO 155 NHF AMF
LEACHMAN ERICA 0025
LEACHMAN ERICA 8058

Q A S TRAVELER 23-4 NHF AMF
TRAVELER 3173 G D A R
FOREVER LADY 626 G D A R
Dam: HILOW ROSEBUD 40D
DIRECTOR
HILOW ROSEBUD 36B
HILOW ROYAL ROSEBUD 35Z

EPDs:
BW:-2.4
WW:+16
YW:+38
Milk:+16
TM:+24
SC:-0.31
YG:+22
CED:+10.0
CEM:+7.0
Marb:+0.04
REA:-0.10
FAT:+0.015



38F is a calving ease specialist. His daughters have made exceptional mothers and his bull calves have worked well for their owners. Skye-View Angus of Choiceland purchased a son at the Triple 'A' Sale. He left quite an imprint in Colleen's herd.

BW: 80 lbs. 205 wt: 720 lbs. 365 wt: 1121 lbs.

S
E
R
V
I
C
E

S
I
R
E
S



Elixir 66U was the high selling calving ease bull purchased from Darby and Sarah Delorme at the 2009 South Shadow/Boundary Angus Sale. We were looking for consistent calving ease and Elixir 66U delivered - 25 heifers calved this spring without any problems. The average birth weight was 75 lbs. We AI'd a few heifers this spring and let Elixir 66U cover the majority as he did a great job his first season.

E DLD 4R NEW ELIXIR 66U

Male DLD 66U February 01 2008 1455242

B/R NEW DESIGN 036 NHF AMF
B/R NEW FRONTIER 095 NHF AMF
WHITE FENCE PRIDE H1
Sire: SSAP NEW ELIXIR 4R
ANKONIAN ELIXIR 100
SOUTH SHADOW EILEEN 5M
JAY EN DEE EILEEN 36D

CUDLOBE RAINMAKER 39K
SOUTH SHADOW RAIN MAN 2M
SOUTH SHADOW DIAMOND 13K
Dam: DLD AKITA 8S
GARDENS EXT 4137 S2 NHF AMF
DLD AKITA 25P
SOUTH SHADOW AKITA 3H

EPDs:
BW:-1.7
WW:+31
YW:+70
Milk:+21
TM:+37
YG:+39
CED:+11.0
CEM:+11.0
BW: 74 lbs.
205 wt: 716 lbs.
365 wt: 1234 lbs.

F HILOW TITAN 13P

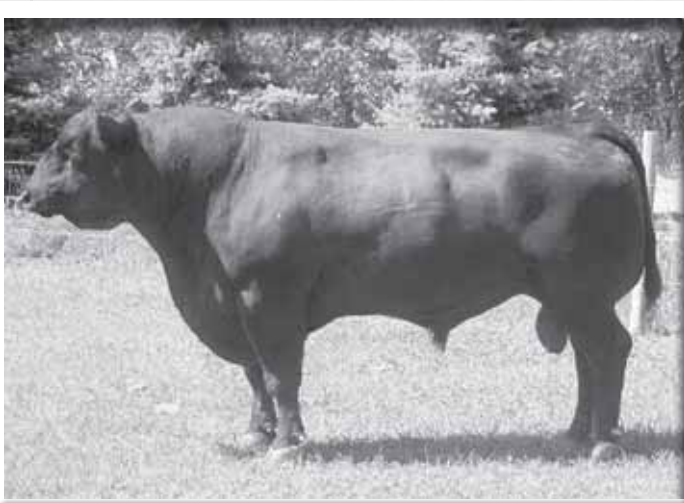
Male TW HNR 13P February 27 2004 1239941

TC STOCKMAN 365
CHICO HANNIBAL 43H
CHICO ROSEBUD 2E
Sire: ISLA BANK TITAN 148
MINERTS FORTUNE 2000 NHF AMF
ISLA BANK PRIDE 11G
ISLA BANK PRIDE 20E

FREYS EXTRA PROFIT
PEAK DOT PROFIT 11C
WINDOVER PRIDE 6U
Dam: HILOW HEATHER 23E
HILOW INDEPENDENCE 5S
HILOW HEATHER 25W
ROLLING STOCK HEATHER 7P

EPDs:
BW:+5.5
WW:+48
YW:+71
Milk:+13
TM:+37
SC:+0.73
YG:+22
CED:-5.0
CEM:+6.0
Marb:+0.09
REA:+0.20
FAT:-.045

BW: 84 lbs. 205 wt: 716 lbs. 365 wt: 1251 lbs.



Titan was purchased by Dan and Ken through the 2005 Triple A sale where he was the high selling bull that day. He's been used extensively in both herds for the last six years, with what they feel are outstanding results. Ken walks him early in the season and Dan uses him from mid June. His bull calves have great muscle pattern with plenty of performance and they have been easy to market. There are several daughters in production and they are making terrific cows - some daughters are also offered in the sale. Titan cracked the 2009 top 50 list of sires for registrations. There were not a lot of walking bulls on that list.

G BELL NET RETURN 3U

Male NBK 3U January 20 2008 1437908

SITZ TRAVELER 8180 NHF AMF
S A V 8180 TRAVELER 004 NHF AMF
BOYD FOREVER LADY 8003

Sire: S A V NET WORTH 4200 NHF AMF

S A F 598 BANDO 5175 AMF

S A V MAY 2410

S A V MAY 6269

MVFA NET PROFIT 6F

LONE STAR ONLY PROFIT 1J

KLUZAK ERICA 11F

Dam: BELL MS PRIDE 16L

MERIT 7163

HOWE MS PRIDE 76J

MS HOWE PRIDE DDH 137G

EPDs:

BW:+4.6

WW:+50

YW:+92

Milk:+19

TM:+44

SC:+0.64

YG:+43

CED:+0.0

CEM:+3.5

Marb:+0.16

REA:+0.18

FAT:+0.13

BW: 96 lbs. 205 wt: 833 lbs. 365 wt: 1361 lbs.

Net Return sires moderate framed, thick cattle with plenty of performance. Unfortunately he was lost this fall due to injury, so his progeny and services are very limited.



S A V Net Worth 4200
Sire of 3U

H BELL RIBSTONE 53U

Male NBK 53U March 25 2008 1464038

WILLABAR SPECIALIST 141H
RCL RIBSTONE SPECIAL LINK 15M
LOR WIN IDELETTE 22D

Sire: GH RIBSTONE 81P

ACN DMM DYNASTY 15J

GH DELIA INA 73M

TWIN HILLS DELIA INA 8'98

BLACK RIDGE W WIDESPREAD 2K

ISLA BANK WIDESPREAD 107N

ISLA BANK PRINCESS ANNIE 5K

Dam: IVANHOE ROYAL PRIDE 7S

YOUNG DALE CHALLENGER 4K

IVANHOE ROYAL PRIDE 25M

IVANHOE ROYAL PRIDE 14J

EPDs:

BW:-0.8

WW:+39

YW:+63

Milk:+13

TM:+33

SC:+1.02

YG:+25

CED:+4.0

CEM:+4.0

BW: 77 lbs. 205 wt: 816 lbs. 365 wt: 1228 lbs.

Ribstone was purchased in dam from Ivanhoe Angus. He had a 70 pound birth weight and consistently sires light birth calves. We've used him on our heifers for two years with no assisted births the first year. The dam is a very feminine, good uddered cow.

I S A V BISMARCK 5682

Male (ET) IMP 5682R February 01 2005 1369591 NHF AMF

D H D TRAVELER 6807 NHF AMF
G D A R TRAVELER 044 NHF AMF
G D A R BLACKCAP LADY 840

Sire: G A R GRID MAKER NHF AMF

G A R PRECISION 1680 NHC AMC

G A R PRECISION 2536 NHF AMC

G A R EXT 2104

A A R NEW TREND

SCHOENES FIX IT 826 NHF AMF

SKY HIGH BLACKBIRD 4119

Dam: S A V ABIGALE 0451

BON VIEW EMULATION EXT 473 NHF AMF

S A V ABIGALE 6062

CIRCLE A ABIGALE 3008

EPDs:

BW:+0.0

WW:+56

YW:+100

Milk:+27

SC:+0.93

CED:+12.0

CEM:+11.0

Marb:+0.06

REA:+0.54

FAT:-0.010



Bismark's progeny are most popular with buyers. His service is valuable.

Hi Low Angus
R.R. #1, Box 30
Lumsden, SK S0G 3C0

CANADA POSTES
POST CANADA

Port payé
Médiaposte
avec adresse

Postage paid
Addressed
Admail 03070247



Lot 19



Lot 23



Lot 55