

Feature FEMALE Sale

Ruby Cow Family The HF Ruby Cow Family

From the Dam of Kodiak 5R



LOT 98

HF RUBY 216T

98 FEMALE • HAMI 216T • JANUARY 28 2007 • #1403724
HF Ruby 216T

TC FREEDOM 104 NHF AMF
HF FREE WHEELER 191N
DURALTA 14C ECHO 32E

VERMILION YELLOWSTONE NHF AMF CAF
WILBAR RUBY 955N
WILBAR RUBY 161J

CONNELLY FOREFRONT NHF AMF CAF
T C RUBY 9095
HF WALK-ON 14C
STONEHAVEN MISS PONDEROSA 9U
VERMILION DATELINE 7078 NHF AMF CAF
VERMILION B JESTRESS 3912
EARLY SUNSET HIGH TIME 47G
WILBAR RUBY 3F

BW	ADJ WW	EPD'S	BW	WW	YW	MILK	TM	YG
85	621		2.8	40	79	21	41	39

OBSERVED BRED MAY 13 TO HF HEMI 151T CHECKED SAFE. PE HF HEMI 151T MAY 8 - JUNE 19

98A FEMALE • HAMI 320X • FEBRUARY 16 2010 • #1569270
HF Ruby 320X

SOUTHLAND FREE RIDE 68R
SOUTHLAND EXCLUSIVE 62U
SOUTHLAND SUSAN 58L

BW	ADJ WW	EPD'S	BW	WW	YW	MILK	TM	YG
78	692		2.7	48	87	20		37

TC FREEDOM 104 NHF AMF
SOUTHLAND ERROLINE 44L
RONAN R BANDOLIERMERE 108H
RONAN SUSAN 36J

100 FEMALE • HAMI 38S • JANUARY 12 2006 • #1332264
HF Ruby 38S

RIVERBEND POWERLINE 0050
HF POWER SOURCE 94M
DURALTA 14C ECHO 32E

VERMILION YELLOWSTONE NHF AMF CAF
WILBAR RUBY 955N
WILBAR RUBY 161J

CONNELLY FRONTLINE NHF AMF
LEACHMAN BLACKBIRD 8060
HF WALK-ON 14C
STONEHAVEN MISS PONDEROSA 9U
VERMILION DATELINE 7078 NHF AMF CAF
VERMILION B JESTRESS 3912
EARLY SUNSET HIGH TIME 47G
WILBAR RUBY 3F

BW	ADJ WW	EPD'S	BW	WW	YW	MILK	TM	YG
80	676		1.5	37	65	22	41	27

OBSERVED BRED MAY 4 TO HF KODIAK 250U CHECKED SAFE. PE HF KODIAK 250U MAY 15 - JULY 19

101A 4 Frozen Embryos

KMK ALLIANCE 6595 187
CONNELLY CONSENSUS
BLINDA OF CONANGA 004

VERMILION YELLOWSTONE NHF AMF CAF
WILBAR RUBY 955N
WILBAR RUBY 161J

101B 4 Frozen Embryos

KMK ALLIANCE 6595 187
CONNELLY CONSENSUS
BLINDA OF CONANGA 004

VERMILION YELLOWSTONE NHF AMF CAF
WILBAR RUBY 955N
WILBAR RUBY 161J



LOT 98A

HF RUBY 320X

99 FEMALE • HAMI 357X • FEBRUARY 25 2010 • #1589859
HF Ruby 357X

SANDY BAR ADVANTAGE 43M
HF KODIAK 5R
WILBAR RUBY 955N

DURALTA 429M REALIST 77R
HF RUBY 135T
HF RUBY 184M

TC ADVANTAGE NHF AMF CAF
SANDY BAR JEMINA 44K
VERMILION YELLOWSTONE NHF AMF CAF
WILBAR RUBY 161J LASS 34'93
SITZ ALLIANCE 6595 NHF AMF
DURALTA GEORGINA 59N
HF DYNA STAR 80J
CALEDONIAN RUBY 53J

BW	ADJ WW	EPD'S	BW	WW	YW	MILK	TM	YG
74	617		0.9	42	77	18		35



REF

WILBAR RUBY 955N • DAM OF LOT 100

The Blackcap Cow Family



LOT 102

HF BLACKCAP 17S



LOT 103

HF BLACKCAP 216W

102 FEMALE • HAMI 17S • JANUARY 08 2006 • #1332203

HF *Miss Blackcap* 17S

MILLCREEK DIVERSITY NHF AMF CAF
 CHICO NEBRASKA 13N
 CHICO BEAUTY LASS 46F
 GREENS PREMIUM 7578
 HF MISS BLACKCAP 163L
 HF MISS BLACKCAP 12C

G A R SLEEP EASY 1009 NHF AMF CAF
 MILLCREEK TRAVEL LASS
 V D A R NEW TREND 315 NHF AMF CAF
 LLB BEAUTY LASS 67B
 WK ULTIMATUM
 GREENS LORI 5078
 Q A S TRAVELER 23-4 NHF AMF CAF
 HF MISS BLACKCAP 27A

BW	ADJ WW	EPD'S	BW	WW	YW	MILK	TM	YG
80	604		3.4	42	75	15	36	33

PE HF KODIAK 250U MAY 26 - JULY 19 (FAVORABLE TO MAY 29 BREEDING) CHECKED SAFE



LOT 104

HF BLACKCAP 21S

103 FEMALE • HAMI 216W • JANUARY 23 2009 • #1511331

HF *Blackcap* 216W

S A V 004 PREDOMINANT 4438 NHF AMF CAF
 HF HEMI 151T
 HF TIBBIE 100M
 DURLOWE MAGIC 40J
 R.F. BLACKCAP 727M
 R F BLACKCAP 227D

S A V 8180 TRAVELER 004 NHF AMF CAF
 S A V EMBLYNETTE 1182
 REMITALL ICEMAN 10K
 HF TIBBIE 86K
 EBON HILL EQUALIZER 34'94
 DURLOWE EILEEN 504E
 V D A R NEW TREND 315 NHF AMF CAF
 R F BLACKCAP 27Z

BW	ADJ WW	EPD'S	BW	WW	YW	MILK	TM	YG
103	685		9.0	60	93	19	49	33

PE SIX MILE FINAL ROUND 914W MAY 5 - JULY 27 (FAVORABLE TO ~ JUNE 2) CHECKED SAFE

104 FEMALE • WYAA 21S • JANUARY 06 2006 • #1345301

2HR *Blackcap* 21S

TWIN VALLEY PRECISION E161 NHC AMF CAF
 BT TOUCHDOWN 14N NHC AMF
 BT EVERELDA ENTENSE 65J
 WHITSTONE WIDESPREAD MB NHF AMF
 HF BLACKCAP 138L
 ARDA BLACKCAP 16G

G A R PRECISION 1680 NHC AMC
 W C C BLACKCAP C9
 LEACHMAN RIGHT TIME AMF
 SITZ EVERELDA ENTENSE 1905
 N BAR EMULATION EXT NHF AMF CAF
 M B RACHEL 2173
 COLDSTREAM FOREST GUMP 62E
 ARDA BLACKCAP 110Y

BW	ADJ WW	EPD'S	BW	WW	YW	MILK	TM	YG
104	599		6.2	38	74	13	32	36

AI APR 7 TO HF TIGER 5T CHECKED SAFE. PE DUFF 927K MOVIN UP 874 MAY 3 - JUNE 26 TESTED FREE OF NH OR NHF

Feature FEMALE Sale

The Blackcap Cow Family



LOT 105 HF MISS BLACKCAP 125X

105 FEMALE • HAMI 125X • JANUARY 20 2010 • #1569135
HF Miss Blackcap 125X

HF KODIAK 5R HF KODIAK 5R
 HF KODIAK 5R
 WILBAR RUBY 955N
 RIVERBEND POWERLINE 0050
 HF MISS BLACKCAP 50N
 HF MISS BLACKCAP 8G

TC ADVANTAGE NHF AMF CAF
 SANDY BAR JEMINA 44K
 VERMILION YELLOWSTONE NHF AMF CAF
 WILBAR RUBY 161J
 CONNEALY FRONTLINE NHF AMF CAF
 LEACHMAN BLACKBIRD 8060
 HF WALK-ON 14C
 HF MISS BLACKCAP 23D

BW	ADJ WW	EPD'S	BW	WW	YW	MILK	TM	YG
86	635		1.7	43	74	20		34

Miss Blackcap 27R and her Tiger bull calf, HF Swagger 75W were awarded Reserve Late Mature Cow/Calf pair behind the Grand Champion Female from SOO Line Cattle Co. 27R is prototypical of what an Angus female should be...Lots of volume, beautiful udder, great structure, and nice fronted. HF Swagger 75W sold in the 2009 Masterpiece sale to Chute Creek Ranch for 37,500.00. Miss Blackcap 27R was Reserve Champion Female at Agribition 2006 and her heifer calf at side brought \$9000.00 in the HF sale going to GMC Angus. A great opportunity to purchase some very exciting matings.



REF HF MISS BLACKCAP 27R • DAM OF LOT 105



REF HF SWAGGER 75W
 SON OF HF MISS BLACKCAP 27R

HF MISS BLACKCAP 27R WITH CALF AT SIDE HF SWAGGER 75W. SWAGGER WAS THE HIGH SELLING BULL CALF AT THE MASTERPIECE SALE FOR \$37,500 TO CHUTE CREEK ANGUS

106A FEMALE
4 Frozen Embryos

HF KODIAK 5R TC FREEDOM 104
 HF TIGER 5T NHF AMF HF MISS BLACKCAP 27R
 HF ECHO 84R HF MISS BLACKCAP 50N

LOT 105A EMBRYOS WILL RESULT IN FULL SIBS TO HF SWAGGER 75W

106B FEMALE
4 Frozen Embryos

KMK ALLIANCE 6595 187 TC FREEDOM 104
 CONNEALY CONSENSUS HF MISS BLACKCAP 27R
 BLINDA OF CONANGA 004 HF MISS BLACKCAP 50N

107 FEMALE • HAMI 166T • JANUARY 19 2007 • #1401795
HF Florressa 166T

HF KODIAK 5R HF KODIAK 5R TC ADVANTAGE NHF AMF CAF
 HF KODIAK 5R SANDY BAR JEMINA 44K
 WILBAR RUBY 955N VERMILION YELLOWSTONE NHF AMF CAF
 HF PROGRESS 20K WILBAR RUBY 161J
 HF FLORRESSA 145M NORTHERN IMPROVEMENT 4480 GF NHF AMF CAF
 HF FLORRESSA 133J GNAS CRACKER 33G
 HF FLORRESSA 27B

BW	ADJ WW	EPD'S	BW	WW	YW	MILK	TM	YG
87	704		1.2	44	75	18	40	31

OBSERVED BRED MAY 6 TO SIX MILE FINAL ROUND 914W CHECKED SAFE.
 PE HF HEMI 151T MAY 7 - MAY 30; DFCC 32T NEXT BREAK 46W JUNE 1 - JULY 19



LOT 107 HF FLORRESSA 166T

Feature Females Hamilton Feature Females



LOT 108

HF BESSIE 291W



LOT 110A

HF JESTRESS 92X

108 FEMALE • HAMI 291W • FEBRUARY 07 2009 • #1511390

HF *Bessie* 291W

HF KODIAK 5R
HF TIGER 5T NHF AMF
HF ECHO 84R

CENTURY TOUCHSTONE 131
LINDON BESSIE 30'96
LINDON BESSIE 14'88

SANDY BAR ADVANTAGE 43M
WILBAR RUBY 955N
TC FREEDOM 104 NHF AMF
HFDF ECHO 6N
GINGER HILL DUSTER 89 NHF AMF CAF
WAR SARA 7142 0003
LINDBARRY GALAXIE 61'84
LINDBARRY BESSIE 10'85

BW	ADJ WW	EPD'S	BW	WW	YW	MILK	TM	YG
110	685		6.0	49	88	19	44	39

AI APR 9 TO HF DONE RIGHT 125R CHECKED SAFE. PE SIX MILE FINAL ROUND 914W MAY 5 - JULY 27

109 FEMALE • HAMI 132X • JANUARY 21 2010 • #1569141

HF *Bessie* 132X

SANDY BAR ADVANTAGE 43M
HF KODIAK 5R
WILBAR RUBY 955N

HF PROGRESS 20K
HF BESSIE 59P
HF BESSIE 63M

TC ADVANTAGE NHF AMF CAF
SANDY BAR JEMINA 44K
VERMILION YELLOWSTONE NHF AMF CAF
WILBAR RUBY 161J
NORTHERN IMPROVEMENT 4480 GF NHF AMF CAF
DURALTA 14C ECHO 32E
HF MOST WANTED 46H
HF BESSIE 120K

BW	ADJ WW	EPD'S	BW	WW	YW	MILK	TM	YG
76	581		-0.9	34	66	18		35

110 FEMALE • WYAA 79S • FEBRUARY 02 2006 • #1345318

2HR *Jestress* 79S

HF PROGRESS 20K
2HR PROGRESSION 8N
HF TIBBIE 75L

HF PREMIUM PLUS 74K
HF JESTRESS 182M
KBJ JESTRESS 47A

NORTHERN IMPROVEMENT 4480 GF NHF AMF CAF 10'85
DURALTA 14C ECHO 32E
WHITSTONE 9FB3 G228
HF TIBBIE 11H
GREENS PREMIUM 7578
HF EVENING TINGE 20F
WK EXTRO
VALLEYMERE HPS JESTRESS 3S

BW	ADJ WW	EPD'S	BW	WW	YW	MILK	TM	YG
84	607		4.8	42	60	16	37	19

AI MAY 2 TO HF KODIAK 5R CHECKED SAFE. PE DUFF 927K MOVIN UP 874 MAY 5 - MAY 27

110A FEMALE • HAMI 92X • JANUARY 17 2010 • #1569112

HF *Jestress* 92X

SANDY BAR ADVANTAGE 43M
HF KODIAK 5R
WILBAR RUBY 955N

TC ADVANTAGE NHF AMF CAF
SANDY BAR JEMINA 44K
VERMILION YELLOWSTONE NHF AMF CAF
WILBAR RUBY 161J

BW	ADJ WW	EPD'S	BW	WW	YW	MILK	TM	YG
90	621		3.5	45	71	16		28

Feature FEMALE Sale

Hamilton Feature Females

111 FEMALE • HAMI 282T • FEBRUARY 10 2007 • #1401857
HF Blackwood Lady 282T

GREENS PREMIUM 7578
 HF PREMIUM PLUS 74K
 HF EVENING TINGE 20F

RIVERBEND POWERLINE 0050
 HF BLACKWOOD LADY 19P
 HF MISS BLACKWOOD LADY 17E

WK ULTIMATUM
 GREENS LORI 5078
 MVHF INNOVATOR 49B
 R F EVENING TINGE 108C
 CONNEALY FRONTLINE NHF AMF CAF
 LEACHMAN BLACKBIRD 8060
 HF WALK-ON 14C
 BLACKWOOD LADY HK 3085

BW	ADJ WW	EPD'S	BW	WW	YW	MILK	TM	YG
75	659		2.7	50	73	15	40	23

PE HF HEMI 151T MAY 8 - JUNE 19. OBSERVED BRED MAY 15 CHECKED SAFE

111A FEMALE • HAMI 313X • FEBRUARY 15 2010 • #1569266
HF Blackwood Lady 313X

HF KODIAK 5R
 HF TIGER 5T NHF AMF
 HF ECHO 84R

SANDY BAR ADVANTAGE 43M
 WILBAR RUBY 955N
 TC FREEDOM 104 NHF AMF
 HFDF ECHO 6N

BW	ADJ WW	EPD'S	BW	WW	YW	MILK	TM	YG
74	659		0.6	54	92	19		38

112 FEMALE • HAMI 115T • JANUARY 13 2007 • #1405010
HF Misty's Valentine 115T

S A V 8180 TRAVELER 004 NHF AMF CAF
 S A V 004 TRAVELER 4147
 S A V EMBLYNETTE 1181

NORTHERN IMPROVEMENT 4480 GF NHF AMF CAF
 HF MISTY'S VALENTINE 166L
 EXAR MISTRESS 9481

SITZ TRAVELER 8180 NHF AMF CAF
 BOYD FOREVER LADY 8003
 S A F 598 BANDO 5175 AMF CAC
 SAV EMBLYNETTE DIAMOND 6377
 TC STOCKMAN 365
 BLACKCAP OF R R 5367
 O G L BATTLE CRY 427 128
 C C MISTRESS 4149-2177 M

BW	ADJ WW	EPD'S	BW	WW	YW	MILK	TM	YG
76	560		0.4	40	71	20	40	31

OBSERVED BRED MAY 2 TO DUFF 927K MOVIN UP 874 CHECKED SAFE.
 PE DUFF 927K MOVIN UP 874 MAY 3 - MAY 27; DURALTA 429M REALIST 77R MAY 28 - JULY 19

112A FEMALE • HAMI 396X • MARCH 12 2010 • #1569313
HF Misty's Valentine 396X

HF KODIAK 5R
 HF RANCH HAND 29U
 HF ECHO 200N

SANDY BAR ADVANTAGE 43M
 WILBAR RUBY 955N
 TC FREEDOM 104 NHF AMF
 DURALTA 14C ECHO 32E

BW	ADJ WW	EPD'S	BW	WW	YW	MILK	TM	YG
81	657		1.8	42	74	19		32



LOT 111A HF BLACKWOOD LADY 313X



LOT 111 HF BLACKWOOD LADY 282T



LOT 112A HF MISTY'S VALENTINE 396X

Feature Females Hamilton Feature Females

113 FEMALE • HAMI 115T • JANUARY 13 2007 • #1405010

HF Delia 296T

RIVERBEND POWERLINE 0050
HF POWER SOURCE 94M
DURALTA 14C ECHO 32E

VALLEY BLOSSOM ADVANTAGE 732M
SANDY BAR DELIA 528P
SANDY BAR DELIA 508M

CONNELLY FRONTLINE NHF AMF CAF
LEACHMAN BLACKBIRD 8060
HF WALK-ON 14C
STONEHAVEN MISS PONDEROSA 9U
TC ADVANTAGE NHF AMF CAF
SANDY BAR TILDA 742K
SQUAW COULEE PRIME TIME 8K
SANDY BAR DELIA 140K

BW	ADJ WW	EPD'S	BW	WW	YW	MILK	TM	YG
83	751		3.4	40	70	24	44	30

AI APR 8 TO HF TIGER 5T CHECKED SAFE. PE HF HEMI 151T MAY 8 - JUNE 19

113A FEMALE • HAMI 271X • FEBRUARY 05 2010 • #1569240

HF Delia 271X

HF KODIAK 5R
HF TIGER 5T NHF AMF
HF ECHO 84R

SANDY BAR ADVANTAGE 43M
WILBAR RUBY 955N
TC FREEDOM 104 NHF AMF
HFDF ECHO 6N

BW	ADJ WW	EPD'S	BW	WW	YW	MILK	TM	YG
70	650		0.1	47	87	23		41

115 FEMALE • HAMI 168W • JANUARY 20 2009 • #1511308

HF Charity 168W

SANDY BAR ADVANTAGE 43M
HF KODIAK 5R
WILBAR RUBY 955N

TC ADVANTAGE NHF AMF CAF
SANDY BAR JEMINA 44K
VERMILION YELLOWSTONE NHF AMF CAF
WILBAR RUBY 161J LASS 34'93
CRESCENT CREEK REVIVAL 06J
CRESCENT CREEK LASSIE 33H
BAR-E-L MCC 365 ICON 20H
BAR-E-L ENCHANTRESS 10G

BW	ADJ WW	EPD'S	BW	WW	YW	MILK	TM	YG
85	668		2.8	47	71	16	40	24

AI APR 7 TO HF DONE RIGHT 125R CHECKED SAFE. PE SIX MILE FINAL ROUND 914W MAY 5 - JULY 27

116 FEMALE • HAMI 130T • JANUARY 16 2007 • #1404998

HF Miss Marion 130T

S A V 8180 TRAVELER 004 NHF AMF CAF
S A V 004 TRAVELER 4147
S A V EMBLYNETTE 1181

SITZ TRAVELER 8180 NHF AMF CAF
BOYD FOREVER LADY 8003
S A F 598 BANDO 5175 AMF CAC
SAV EMBLYNETTE DIAMOND 6377
MERIT 6105
CEDAR CREEK 27G
G D A R EXECUTIVE 727 NHF AMF
ALLEN CROFT MISS MARION 01 49Y

PEAK DOT WONDER 13J
HF MISS MARION 134L
ALLEN CROFT MISS MARION 09 64J

BW	ADJ WW	EPD'S	BW	WW	YW	MILK	TM	YG
98	664		5.7	48	82	27	51	35

AI APR 7 TO HF KODIAK 5R.
PE DUFF 927K MOVIN UP 874 MAY 3 - JUNE 26 (FAVORABLE TO PE) CHECKED SAFE

114 FEMALE • HAMI 183S • FEBRUARY 06 2006 • #1349749

HF Delia 183S

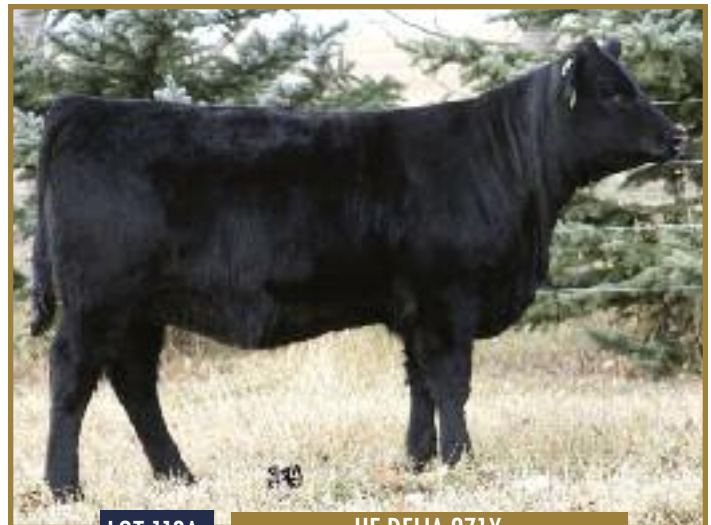
BWB TRAVELER 1'01 OF 044
BWB TRAVELER 110P
BWB LASS 52'01 OF ROYCE 741C

VALLEY BLOSSOM ADVANTAGE 732M
SANDY BAR DELIA 528P
SANDY BAR DELIA 508M

G D A R TRAVELER 044 NHF AMF BWB
LADY 18'96 OF THREAT
STEVENSON ROYCE 741C NHF CAF
BWB SPARTAN LASS 34'93
TC ADVANTAGE NHF AMF CAF
SANDY BAR TILDA 742K
SQUAW COULEE PRIME TIME 8K
SANDY BAR DELIA 140K

BW	ADJ WW	EPD'S	BW	WW	YW	MILK	TM	YG
70	707		1.1	42	71	14	35	29

AI APR 20 TO HF TIGER 5T CHECKED SAFE. PE HF KODIAK 250U MAY 29 - JULY 15



LOT 113A HF DELIA 271X



LOT 116 HF MISS MARION 130T

Feature FEMALE Sale

Hamilton Feature Females



LOT 150

HF ESTHER 150X

117 FEMALE • HAMI 150X • JANUARY 23 2010 • #1569163
HF *Esther* 150X

SANDY BAR IDEAL 18S
HF IDEAL 266U
HF ERICA 187R
HF ERICA 61F
HF PROGRESS 20K
HF ESTHER 70N
HIDDEN ESTHER 140L

PRAIRIELANE IDEAL 7451-2014
SANDY BAR PRIDE 89L
TC FREEDOM 104 NHF AMF
NORTHERN IMPROVEMENT 4480 GF NHF AMF CAF
DURALTA 14C ECHO 32E
SOUTHERN OX GUNNER 92G
GNS ESTHER 46H

BW	ADJ WW	EPD'S	BW	WW	YW	MILK	TM	YG
90	654		3.4	47	83	18		33



LOT 118A

HF ESTHER 377X

118 FEMALE • HAMI 25T • JANUARY 15 2007 • #1401843
HF *Esther* 25T

HF KODIAK 5R HF KODIAK 5R
HF KODIAK 5R
WILBAR RUBY 955N
HF PROGRESS 20K
HF ESTHER 70N
HIDDEN ESTHER 140L

TC ADVANTAGE NHF AMF CAF
SANDY BAR JEMINA 44K
VERMILION YELLOWSTONE NHF AMF CAF
WILBAR RUBY 161J
NORTHERN IMPROVEMENT 4480 GF NHF AMF CAF
DURALTA 14C ECHO 32E
SOUTHERN OX GUNNER 92G
GNS ESTHER 46H

BW	ADJ WW	EPD'S	BW	WW	YW	MILK	TM	YG
72	601		-0.1	40	68	14	34	28

PE HF HEMI 151T MAY 7 - JUNE 19. OBSERVED BRED JUNE 3 CHECKED SAFE

118A FEMALE • HAMI 377X • MARCH 03 2010 • #1569304
HF *Esther* 377X

SOUTHLAND FREE RIDE 68R
SOUTHLAND EXCLUSIVE 62U
SOUTHLAND SUSAN 58L

TC FREEDOM 104 NHF AMF
SOUTHLAND ERROLINE 44L
RONAN R BANDOLIERMERE 108H
RONAN SUSAN 36J

BW	ADJ WW	EPD'S	BW	WW	YW	MILK	TM	YG
85	638		2.7	45	77	16		32

120 FEMALE • HAMI 198T • JANUARY 23 2007 • #1404963
HF *June* 198T

HF MOST WANTED 46H
2HR WONDERBOY 15N
HF TIBBIE 74L

TC FREEDOM 104 NHF AMF
2HR JUNE 4R
2HR JUNE 7N

HF WALKER 107E
HFRF ROSEBUD 72F
PEAK DOT WONDER 13J
HF TIBBIE 127J
CONNELLY FOREFRONT NHF AMF CAF
T C RUBY 909S
HF PROGRESS 20K
HF JUNE 100L

BW	ADJ WW	EPD'S	BW	WW	YW	MILK	TM	YG
62	604		1.5	36	71	22	40	35

OBSERVED BRED APR 10 TO HF KODIAK 250U CHECKED SAFE.
PE DUFF 927K MOVIN UP 874 MAY 3 - JUNE 26

119 FEMALE • HAMI 23T • JANUARY 03 2007 • #1404989
HF *Princess Blackcap* 23T

S A V 8180 TRAVELER 004 NHF AMF CAF
S A V 004 PREDOMINANT 4438 NHF AMF CAF
S A V EMBLYNETTE 1182

SITZ TRAVELER 8180 NHF AMF CAF
BOYD FOREVER LADY 8003
S A F 598 BANDO 5175 AMF CAC
S A V EMBLYNETTE 7319

GREENS PREMIUM 7578
HF PRINCESS BLACKCAP 72L
HF PRINCESS BLACKCAP 10G

WK ULTIMATUM
GREENS LORI 5078
GV DUKE 18C
RANNOCH PRINCE BLACKCAP 159Z

BW	ADJ WW	EPD'S	BW	WW	YW	MILK	TM	YG
64	456		1.0	45	78	9	32	32

AI APR 25 TO HF TIGER 5T CHECKED SAFE. PE DUFF 927K MOVIN UP 874 MAY 3 - JUNE 26

Feature Females Hamilton Feature Females



LOT 121

2HR FANTASY 43S

121 FEMALE • WYAA 43S • JANUARY 12 2006 • #1345305
2HR *Fantasy* 43S

TWIN VALLEY PRECISION E161 NHC AMF CAF
BT TOUCHDOWN 14N NHC AMF
BT EVERELDA ENTENSE 65J
GREENS PREMIUM 7578
HF FANTASY 158L
NR FANTASY 9F
G A R PRECISION 1680 NHC AMC
W C C BLACKCAP C9
LEACHMAN RIGHT TIME AMF
SITZ EVERELDA ENTENSE 1905
WK ULTIMATUM
GREENS LORI 5078
BIG BEAR JACK FLASH 88C
BIG BEAR FANTASIA 51X

BW	ADJ WW	EPD'S	BW	WW	YW	MILK	TM	YG
85	541		2.8	38	73	18	37	35

AI APR 6 TO SOUTHLAND EXCLUSIVE 62U CHECKED SAFE. PE DUFF 927K MOVIN UP 874 MAY 3 - MAY 27 TESTED FREE OF NH OR NHF

121A FEMALE • HAMI 365X • FEBRUARY 26 2010 • #1586470
HF *Fantasy* 365X

TC FREEDOM 104 NHF AMF
2HR FREESTYLE 15R
2HR ERICA 34N
CONNEALY FOREFRONT NHF AMF CAF
T C RUBY 9095
HF PROGRESS 20K
HF ERICA 44L

BW	ADJ WW	EPD'S	BW	WW	YW	MILK	TM	YG
86	672		4.2	40	74	21		33

122 FEMALE • WYAA 1S • JANUARY 01 2006 • #1345348
2HR *Fantasy* 1S

TWIN VALLEY PRECISION E161
TWIN VALLEY PRECISION E161
TWIN VALLEY PRECISION E161
HF POWER STROKE 59M
2HR FANTASY 56P
HF FANTASY 158L
G A R PRECISION 1680
W C C BLACKCAP C9
LEACHMAN RIGHT TIME
SITZ EVERELDA ENTENSE 1905
RIVERBEND POWERLINE 0050
DURALTA 14C ECHO 32E
GREENS PREMIUM 7578
NR FANTASY 9F

BW	ADJ WW	EPD'S	BW	WW	YW	MILK	TM	YG
84	643		4.4	45	76	20	43	32

OBSERVED BRED APR 20 TO HF KODIAK 250U.
PE DUFF 927K MOVIN UP 874 MAY 3 - JUNE 26 (FAVORABLE TO MAY 15) CHECKED SAFE.
TESTED FREE OF NH OR NHF

123 FEMALE • NORS 22T • JANUARY 20 2007 • #1406731
Norseman *Ruby* 22'07

B/R NEW FRONTIER 095 NHF AMF CAF
LLB NEW FRONTIER 81N
ISLA BANK PRINCESS ANNIE 4L
BAYSHORE DIABLO 09L
NORSEMAN RUBY 7'04
ELLIOTT RUBY 53 66L
B/R NEW DESIGN 036 NHF AMF
WHITE FENCE PRIDE H1
CHICO HANNIBAL 43H
ISLA BANK PRINCESS ANNE 10G
LEACHMAN SAUGAHATCHEE 3000C NHF AMF CAF
BAYSHORE NANCY 02D
JOHNSTON BANDOLIER 170F
BATSCOL RUBY 53D

BW	ADJ WW	EPD'S	BW	WW	YW	MILK	TM	YG
77	669		3.0	39	69	14	34	30

AI APR 27 TO HF SWAGGER 75W CHECKED SAFE. PE HF HEMI 151T MAY 8 - JULY 19



LOT 122

2HR FANTASY 1S



LOT 123

NORSEMAN RUBY 22'07

Feature FEMALE Sale

Hamilton Feature Females



LOT 126A

HF MAYFLOWER 277X



LOT 124

HF MAYFLOWER 146X

124 FEMALE • HAMI 146X • JANUARY 22 2010 • #1569153

HF *Mayflower* 146X

SANDY BAR ADVANTAGE 43M
HF KODIAK 5R
WILBAR RUBY 955N

GREENS PREMIUM 7578
HF MAYFLOWER 83K
SCHELL'S MAYFLOWER 4F

TC ADVANTAGE NHF AMF CAF
SANDY BAR JEMINA 44K
VERMILION YELLOWSTONE NHF AMF CAF
WILBAR RUBY 161J
WK ULTIMATUM
GREENS LORI 5078
REMINGTON'S BARDOLENE 225D
MAYFLOWER 1R

BW	ADJ WW	EPD'S	BW	WW	YW	MILK	TM	YG
85	661		2.6	48	82	15		35

125 FEMALE • HAMI 195X • JANUARY 27 2010 • #1569198

HF *Mayflower* 195X

SANDY BAR IDEAL 18S
HF IDEAL 266U
HF ERICA 187R

GREENS PREMIUM 7578
HF MAYFLOWER 68L
SCHELL'S MAYFLOWER 4F

PRAIRIELANE IDEAL 7451-2014
SANDY BAR PRIDE 89L
TC FREEDOM 104 NHF AMF
HF ERICA 61F
WK ULTIMATUM
GREENS LORI 5078
REMINGTON'S BARDOLENE 225D
MAYFLOWER 1R

BW	ADJ WW	EPD'S	BW	WW	YW	MILK	TM	YG
70	640		0.2	39	72	20		34

126 FEMALE • JHF 67T • JANUARY 08 2007 • #1402317

HF *Mayflower* 67T

RIVERBEND POWERLINE 0050
HF POWER SOURCE 94M
DURALTA 14C ECHO 32E

PEAK DOT WONDER 13J
HF MAYFLOWER 201L
HF MAYFLOWER 63J

CONNELLY FRONTLINE NHF AMF CAF
LEACHMAN BLACKBIRD 8060
HF WALK-ON 14C
STONEHAVEN MISS PONDEROSA 9U
MERIT 6105
CEDAR CREEK 27G
MVHF INNOVATOR 49B
ASPELUND'S MAYFLOWER 18'95

BW	ADJ WW	EPD'S	BW	WW	YW	MILK	TM	YG
77	614		2.8	33	63	24	41	31

AI APR 9 TO SOUTHLAND EXCLUSIVE 62U CHECKED SAFE. PE HF HEMI 151T MAY 8 - JUNE 19

126A FEMALE • JHF 277X • FEBRUARY 06 2010 • #1569373

HF *Mayflower* 277X

SOUTHLAND FREE RIDE 68R
SOUTHLAND EXCLUSIVE 62U
SOUTHLAND SUSAN 58L

TC FREEDOM 104 NHF AMF
SOUTHLAND ERROLINE 44L
RONAN R BANDOLIERMERE 108H
RONAN SUSAN 36J

BW	ADJ WW	EPD'S	BW	WW	YW	MILK	TM	YG
77	642		2.1	36	67	21		33

Feature Females Hamilton Feature Females



LOT 128

HF STAR 43X



LOT 127A

HF PATRICIA 26X

127 FEMALE • JHF 256T • FEBRUARY 04 2007 • #1402322

HF Patricia 256T

RIVERBEND POWERLINE 0050
HF POWER SOURCE 94M
DURALTA 14C ECHO 32E

HF FORMATION 13K
ATLASTA PATRICIA 57P
ATLASTA PATRICIA 36L

CONNELLY FRONTLINE NHF AMF CAF
LEACHMAN BLACKBIRD 8060
HF WALK-ON 14C
STONEHAVEN MISS PONDEROSA 9U
CONNELLY KINCAID
DURALTA 14C ECHO 32E
DMM STOCKMAN 106J
ATLASTA PATRICIA 12H

BW	ADJ WW	EPD'S	BW	WW	YW	MILK	TM	YG
83	624		4.0	33	60	23	40	27

AI APR 9 TO HF TIGER 5T CHECKED SAFE. PE HF HEMI 151T MAY 8 - JUNE 19



LOT 127&A

HF PATRICIA 256T & HF PATRICIA 26X

127A FEMALE • JHF 26X • JANUARY 08 2010 • #1569366

HF Patricia 26X

SANDY BAR ADVANTAGE 43M
HF KODIAK 5R
WILBAR RUBY 955N

TC ADVANTAGE NHF AMF CAF
SANDY BAR JEMINA 44K
VERMILION YELLOWSTONE NHF AMF CAF
WILBAR RUBY 161J

BW	ADJ WW	EPD'S	BW	WW	YW	MILK	TM	YG
70	660		-0.1	38	69	20	32	

128 FEMALE • HAMI 43X • JANUARY 11 2010 • #1569077

HF Star 43X

HF KODIAK 5R
HF TIGER 5T NHF AMF
HF ECHO 84R

HF FREE WHEELER 191N
HF STAR 143R
NR STAR 3F

SANDY BAR ADVANTAGE 43M
WILBAR RUBY 955N
TC FREEDOM 104 NHF AMF
HFDF ECHO 6N
TC FREEDOM 104 NHF AMF
DURALTA 14C ECHO 32E
BIG BEAR JACK FLASH 88C
LADY MCB OF BIG BEAR

BW	ADJ WW	EPD'S	BW	WW	YW	MILK	TM	YG
73	639		-0.1	44	89	19	44	

Feature FEMALE Sale

Hamilton Feature Females



LOT 130 HF PRIDE LASS 209T



LOT 129 HF PRIDE LASS 255T



LOT 129A HF PRIDE LASS 362X

129 FEMALE • HAMI 255T • FEBRUARY 04 2007 • #1401600

HF Pride Lass 255T

BWB TRAVELER 1'01 OF 044
BWB TRAVELER 110P
BWB LASS 52'01 OF ROYCE 741C

ARSF OBSESSION 10B
LLB PRIDE LASS 59D
WK PRIDE LASS 1424

G D A R TRAVELER 044 NHF AMF BWB LADY 18'96 OF THREAT
STEVENSON ROYCE 741C NHF CAF
BWB SPARTAN LASS 34'93
ACUMEN BOLD LEADER 30X
DOUBLE A GAMMER 15U
WK ACE
ANKONY PRIDE 18P45

BW	ADJ WW	EPD'S	BW	WW	YW	MILK	TM	YG
78	532		1.4	30	49	7	22	19

AI APR 21 TO HF 176W CHECKED SAFE. PE HF HEMI 151T MAY 8 - JUNE 19

129A FEMALE • HAMI 362X • FEBRUARY 26 2010 • #1569295

HF Pride Lass 362X

SOUTHLAND FREE RIDE 68R
SOUTHLAND EXCLUSIVE 62U
SOUTHLAND SUSAN 58L

TC FREEDOM 104 NHF AMF
SOUTHLAND ERROLINE 44L
RONAN R BANDOLIERMERE 108H
RONAN SUSAN 36J

BW	ADJ WW	EPD'S	BW	WW	YW	MILK	TM	YG
77	664		2.0	41	69	13		27

130 FEMALE • HAMI 209T • JANUARY 26 2007 • #1401670

HF Pride Lass 209T

HF KODIAK 5R HF KODIAK 5R
HF KODIAK 5R
WILBAR RUBY 955N

HF MOST WANTED 46H
HF PRIDE LASS 13L
HF PRIDE LASS 53J

TC ADVANTAGE NHF AMF CAF
SANDY BAR JEMINA 44K
VERMILION YELLOWSTONE NHF AMF CAF
WILBAR RUBY 161J
HF WALKER 107E
HFRF ROSEBUD 72F
GREENS PREMIUM 7578
LLB PRIDE LASS 59D

BW	ADJ WW	EPD'S	BW	WW	YW	MILK	TM	YG
95	645		4.0	44	72	15	37	28

AI APR 6 TO SOUTHLAND EXCLUSIVE 62U CHECKED SAFE. PE HF HEMI 151T MAY 8 - JULY 19

Feature Females Hamilton Feature Females

131 FEMALE • HAMI 314T • FEBRUARY 18 2007 • #1402027
HF Queen 314T

S A R FAME 2089
PEAK DOT FAME 2N
BARBARA OF PEAK DOT 642F

HF POWER SOURCE 94M
HF QUEEN 155P
HF QUEEN 54L

S A F FAME NHF AMF CAF
THREE TREES SKYMERE 57X7
HF WALK-ON
BARBARA OF PEAK DOT 445D
RIVERBEND POWERLINE 0050
DURALTA 14C ECHO 32E
NORTHERN IMPROVEMENT 4480 GF NHF AMF CAF
HF QUEENON 81J

BW	ADJ WW	EPD'S	BW	WW	YW	MILK	TM	YG
95	660		5.4	42	72	18	39	31

OBSERVED BRED APR 23 TO HF KODIAK 250U CHECKED SAFE. PE HF HEMI 151T MAY 25 - JUNE 19

131A FEMALE • HAMI 403X • MARCH 16 2010 • #1569317
HF Queen 403X

SOUTHLAND FREE RIDE 68R
SOUTHLAND EXCLUSIVE 62U
SOUTHLAND SUSAN 58L

TC FREEDOM 104 NHF AMF
SOUTHLAND ERROLINE 44L
RONAN R BANDOLIERMERE 108H
RONAN SUSAN 36J

BW	ADJ WW	EPD'S	BW	WW	YW	MILK	TM	YG
79	706		3.6	47	81	18		33

133 FEMALE • HAMI 80W • JANUARY 13 2009 • #1511242
HF Queenie 80W

HF KODIAK 5R
HF TIGER 5T NHF AMF
HF ECHO 84R

GREENS PREMIUM 7578
HF QUEENIE 155L
HF QUEENIE 116H

SANDY BAR ADVANTAGE 43M
WILBAR RUBY 955N
TC FREEDOM 104 NHF AMF
HFDF ECHO 6N 34'93
WK ULTIMATUM
GREENS LORI 5078
GV DUKE 18C
BIG BEAR QUEENIE

BW	ADJ WW	EPD'S	BW	WW	YW	MILK	TM	YG
81	591		1.9	48	83	13	37	35

OBSERVED BRED MAY 12 TO SIX MILE FINAL ROUND 914W CHECKED SAFE.
PE SIX MILE FINAL ROUND 914W MAY 18 - JUNE 13

134 FEMALE • HAMI 110W • JANUARY 15 2009 • #1511258
HF Queenie 110W

HF KODIAK 5R
HF TIGER 5T NHF AMF
HF ECHO 84R

HF PREMIUM PLUS 74K
HF QUEENIE 199R
HF QUEENIE 101K

SANDY BAR ADVANTAGE 43M
WILBAR RUBY 955N
TC FREEDOM 104 NHF AMF
HFDF ECHO 6N 34'93
GREENS PREMIUM 7578
HF EVENING TINGE 20F
HF MOST WANTED 46H
BIG BEAR QUEENIE 46X

BW	ADJ WW	EPD'S	BW	WW	YW	MILK	TM	YG
62	572		-1.1	47	82	15	39	35

PE SIX MILE FINAL ROUND 914W MAY 5 - JULY 27. (BRED ~ MAY 31) CHECKED SAFE

132 FEMALE • HAMI 107S • JANUARY 23 2006 • #1349743
HF Queen 107S

BWB TRAVELER 1'01 OF 044
BWB TRAVELER 110P
BWB LASS 52'01 OF ROYCE 741C

HF POWER SOURCE 94M
HF QUEEN 155P
HF QUEEN 54L

G D A R TRAVELER 044 NHF AMF BWB LADY 18'96
OF THREAT
STEVENSON ROYCE 741C NHF CAF
BWB SPARTAN LASS 34'93
RIVERBEND POWERLINE 0050
DURALTA 14C ECHO 32E
NORTHERN IMPROVEMENT 4480 GF NHF AMF CAF
HF QUEENON 81J

BW	ADJ WW	EPD'S	BW	WW	YW	MILK	TM	YG
81	639		2.5	38	66	8	27	29

OBSERVED BRED MAY 3 TO HF EL TIGRE 28U.

PE HF KODIAK 250U MAY 8 - JULY 19 (FAVORABLE TO MAY 3) CHECKED SAFE



LOT 132

HF QUEEN 107S



LOT 134

HF QUEENIE 110W

Feature FEMALE Sale

Hamilton Feature Females



LOT 135

HF TILDA 311W



LOT 136

HF SALLY 327T

135 FEMALE • HAMI 311W • FEBRUARY 12 2009 • #1511408

HF Tilda 311W

D H D TRAVELER 6807 NHF AMF
DUFF ENCORE 702 NHF AMF CAF
O C C DIXIE ERICA 814G

SANDY BAR WONDERER 24D
VBR TILDA 113J
WIWA CREEK TILDA 33 54'90

Q A S TRAVELER 23-4 NHF AMF CAF
BEMINDFUL MAID D H D 0807
O C C ANCHOR 771A
O C C DIXIE ERICA 764C
TRAVELER OF WLA 1Z
SANDY BAR ANNIE K 26Y
ROYAL NORTH STAR 35W
WIWA CREEK TILDA 33'87

BW	ADJ WW	EPD'S	BW	WW	YW	MILK	TM	YG
81	600		3.9	34	61	10	27	26

AI APR 8 TO HF TIGER 5T CHECKED SAFE. PE SIX MILE FINAL ROUND 914W MAY 18 - JULY 27

136 FEMALE • HAMI 327T • FEBRUARY 24 2007 • #1401861

HF Sally 327T

S A R FAME 2089
PEAK DOT FAME 2N
BARBARA OF PEAK DOT 642F

REMITALL CHOICE MINT 99M
HF SALLY 28P
GV SALLY 40C

S A F FAME NHF AMF CAF
THREE TREES SKYMERE 57X7
HF WALK-ON 14C
BARBARA OF PEAK DOT 445D
S A F FOCUS OF E R NHF AMF CAF
REMITALL NEONIA 42J
ONEILLS NOBLE KNIGHT
GV SALLY 35A

BW	ADJ WW	EPD'S	BW	WW	YW	MILK	TM	YG
85	623		4.8	43	69	18	40	26

AI APR 8 TO HF KODIAK 5R CHECKED SAFE. PE HF HEMI 151T MAY 8 - JULY 19



LOT 137

HF ROSE 60S

137 FEMALE • WYAT 60S • JANUARY 16 2006 • #1349751

HF Rose 60S

RIVERBEND POWERLINE 0050
HF POWER SOURCE 94M
DURALTA 14C ECHO 32E

O G L BATTLE CRY 427 128
HF ROSE 20J
EXAR ROSE 6171

CONNELLY FRONTLINE NHF AMF CAF
LEACHMAN BLACKBIRD 8060
HF WALK-ON 14C
STONEHAVEN MISS PONDEROSA 9U
NICHOLS EUREKA W57
O G L DUSTY ROSE 128 902
B & L COMPUTER 2099
SUN UP ROSE 863

BW	ADJ WW	EPD'S	BW	WW	YW	MILK	TM	YG
75	547		2.4	29	57	24	39	28

AI MAY 11 TO HF KODIAK 5R CHECKED SAFE. PE HF KODIAK 250U JUNE 2 - JULY 19



Commercial Females HF Sired Commercial Heifers

Consigned by Echo Sands Ranching, Doug and Helga Price from Acme, Ab and George Murray, GW Murray Ranching Ltd. from Tilley, Ab.

These feature commercial heifers are sired by and bred to Hamilton Farms bulls. Approximately 150 bred heifers on offer.



Echo Sand Ranching Ltd. Is owned and operated by Doug and Helga Price and family from Acme AB. The ranch has been predominately a black herd for the past 15 yrs, using Black Angus bulls mainly from Hamilton Farms for our replacement females, with a shot of Black Maine bulls as a terminal cross. We calve about 3500 head, so calving ease and low maintenance type of cattle, with super mothering abilities are of the utmost importance. We finish our own calves, so top performance and easy finishing cattle are what we strive for. We got involved with Cow/Calf Herd Health Management services with DR. Troy Drake about 7yrs ago, and with this program we are able to fully trace the value of the carcass back to the mother cow within our herd, which has enabled us to use this in our selection criteria for our replacements.

These heifers have been selected out of 220 head of females sired by Hamilton bulls and bred back to Hamilton bulls. We started breeding 23Jun10 and bulls were out for 60days.

Doug Price 403-809-5866



GW Murray Ranches has been raising commercial cattle just outside of Brooks, Alberta for over 50 years. The cow herd has evolved into a predominantly Black Angus cow herd because of the need for easy maintenance, strong mothering ability, and trouble free udders. This past breeding season we synchronized our breeding heifers and AI'd them to easy calving, maternally focused sires. These bred heifers were mostly sired by Hamilton Farms bulls and were AI'd to HF Tiger ST. We will be offering 45 heifers bred to Tiger and 15 heifers bred to easy calving Hamilton Farms bulls between June 20 - July30th. The 45 synchronized heifers were bred to HF Tiger on June 14th. All of these heifers are brand free.

George Murray 403-362-1120



Feature **FEMALE** Sale

Reference Sires



REF

CONNELY CONSENSUS

RS BULL • 6759 • MARCH 18 2006 • #AAA 15513367
Connealy Consensus

SITZ ALLIANCE 6595
 KMK ALLIANCE 6595 187
 G A R EXT 916
 RITO 616 OF 4B20 6807
 BLINDA OF CONANGA 004
 BLEND OF CONANGA 129

SITZ TRAVELER 8180
 SITZ BARBARAMERE JET 2698
 N BAR EMULATION EXT
 G A R BANDO 338
 D H D TRAVELER 6807
 RITA 4B20 OF OFB1 BANDO
 LEACHMAN RIGHT TIME
 BLENDALIA OF CONANGA

BW	ADJ WW	ADJ YW	EPD'S	BW	WW	YW	MILK	TM	YG
0.3	73	130	19						



REF

SOUTHLAND EXCLUSIVE 62U

RS BULL • CADS 62U • JANUARY 21 2006 • #1421885
Southland Exclusive 62U

TC FREEDOM 104
 SOUTHLAND FREE RIDE 68R
 SOUTHLAND ERROLINE 44L
 RONAN R BANDOLIERMERE 108H
 SOUTHLAND SUSAN 58L
 RONAN SUSAN 36J

CONNELY FOREFRONT
 T C RUBY 9095
 SCA 03H OF IDEAL 1418
 SCA ERROLINE 16H
 KEWETIN BANDOLIERMERE 4A
 BLACKTOF ERICA 84B
 RONAN GIANT 16C
 RONAN BONNIE 46G

BW	ADJ WW	ADJ YW	EPD'S	BW	WW	YW	MILK	TM	YG
92	849	1419	3.7	48	83	18	42	35	



REF

HF FREE WHEELER 191N

HF ECHO 187N FULL SISTER

RS BULL • HAMI 191N • FEBRUARY 27 2003 • #1186212
HF Free Wheeler 191N

CONNELY FOREFRONT
 TC FREEDOM 104
 T C RUBY 9095
 HF WALK-ON 14C
 DURALTA 14C ECHO 32E
 STONEHAVEN MISS PONDEROSA 9U

CONNELY FRONTLINE
 EILEEN HEARTLAND CONANGA6443
 TC STOCKMAN 365
 TC RUBY 4068
 MVHF DREAMWALKER 29A
 KNIGHTS BLACKBIRD 9Y
 4S PONDEROSA
 STONEHAVEN JEAN 5L

BW	ADJ WW	ADJ YW	EPD'S	BW	WW	YW	MILK	TM	YG
98	731	1335	3.6	41	84	25	46	42	

Reference Sires



BULL • HAMI 176W • JANUARY 20 2009 • #1511307

HF *Hemi* 176W

S A V 004 PREDOMINANT 4438
 HF HEMI 151T
 HF TIBBIE 100M
 SANDY BAR ADVANTAGE 43M
 HF ECHO 7S
 HF ECHO 97K

S A V 8180 TRAVELER 004
 S A V EMBLYNETTE 1182
 REMITALL ICEMAN 10K
 HF TIBBIE 86K
 TC ADVANTAGE
 SANDY BAR JEMINA 44K
 GREENS PREMIUM 7578
 DURALTA 14C ECHO 32E

BW	ADJ WW	ADJ YW	EPD'S	BW	WW	YW	MILK	TM	YG
95	809	1326		7.2	68	105	18	52	37



REF HF HEMI 176W



SANDY BAR ADVANTAGE 43M



BULL • HAMI 75W • JANUARY 13 2009 • #1497021

HF *Swagger* 75W

HF KODIAK 5R
 HF TIGER 5T
 HF ECHO 84R
 TC FREEDOM 104
 HF MISS BLACKCAP 27R
 HF MISS BLACKCAP 50N

SANDY BAR ADVANTAGE 43M
 WILBAR RUBY 955N
 TC FREEDOM 104
 HFDF ECHO 6N
 CONNEALY FOREFRONT
 T C RUBY 9095
 RIVERBEND POWERLINE 0050
 HF MISS BLACKCAP 8G

BW	ADJ WW	ADJ YW	EPD'S	BW	WW	YW	MILK	TM	YG
80	769	1433		0.2	57	103	24	53	46



REF HF SWAGGER 75W



BULL • SIXM 914W • JANUARY 18 2009 • #1532696

SIX MILE *Final Round* 914W

SITZ TRAVELER 8180
 S A V FINAL ANSWER 0035
 S A V EMULOUS 8145
 CONNEALY FREIGHTLINER
 SIX MILE HEATHER 706T
 MVF HEATHER 158R

G D A R TRAVELER 71
 SITZ EVERELDA ENTENSE 1137
 BON VIEW BANDO 598
 S A V SKY EMULOUS 2124
 BON VIEW BANDO 598
 JOANA ERICA OF CONANGA
 WESTERN WIDESPREAD 1L
 MVF HEATHER 30M

BW	ADJ WW	ADJ YW	EPD'S	BW	WW	YW	MILK	TM	YG
72	687	1194		0.3	60	101	21	51	42



REF SIX MILE FINAL ROUND 914W

Feature FEMALE Sale

Reference Sires



REF

HF HEMI 151T



HF TIBBIE 100M

RS BULL • HAMI 151T • JANUARY 18 2007 • #1402681
HF *Hemi* 151T

S A V 8180 TRAVELER 004
S A V 004 PREDOMINANT 4438
S A V EMBLYNETTE 1182

REMITALL ICEMAN 10K
HF TIBBIE 100M
HF TIBBIE 86K

SITZ TRAVELER 8180
BOYD FOREVER LADY 8003
S A F 598 BANDO 5175
S A V EMBLYNETTE 7319
DURALTA 111A CHANCE 11H
LLB KEEPSAKE 94H
GREENS PREMIUM 7578
HF TIBBIE 2D

BW	ADJ WW	ADJ YW	EPD'S	BW	WW	YW	MILK	TM	YG
98	855	1404		10.0	88	128	23	67	40



REF

HF POWER SOURCE 94M



DURALTA 14C ECHO 32E

RS BULL • HAMI 94M • JANUARY 21 2002 • #1132770
HF *Power Source* 94M

CONNEALY FRONTLINE
RIVERBEND POWERLINE 0050
LEACHMAN BLACKBIRD 8060

HF WALK-ON 14C
DURALTA 14C ECHO 32E
STONEHAVEN MISS PONDEROSA 9U

CONNEALY DATELINE
PLEASANT PILL OF CONANGA
TC STOCKMAN 365
LEACHMAN BLACKBIRD 3084
MVHF DREAMWALKER 29A
KNIGHTS BLACKBIRD 9Y
4S PONDEROSA
STONEHAVEN JEAN 5L

BW	ADJ WW	ADJ YW	EPD'S	BW	WW	YW	MILK	TM	YG
91	754	1276		2.3	30	52	23	38	22



REF

HF EL TIGRE 28U

RS BULL • HAMI 28U • JANUARY 5 2008 • #1469322
HF *El Tigre* 28U

HF KODIAK 5R HF KODIAK 5R
HF KODIAK 5R
WILBAR RUBY 955N

TC FREEDOM 104
HF ECHO 84R
HFDF ECHO 6N

TC ADVANTAGE NHF AMF CAF
SANDY BAR JEMINA 44K
VERMILION YELLOWSTONE NHF AMF CAF
WILBAR RUBY 161J
CONNEALY FOREFRONT
T C RUBY 9095
RIVERBEND POWERLINE 0050
HF ECHO 83J

BW	ADJ WW	ADJ YW	EPD'S	BW	WW	YW	MILK	TM	YG
85	795	1425		1.6	55	98	22	50	44

Reference Sires



BULL • HAMI 250U • JANUARY 30 2008 • #1447593

HF *Kodiak* 250U

HF KODIAK SR HF KODIAK SR
 HF KODIAK 5R
 WILBAR RUBY 955N
 HF PROGRESS 20K
 2HR TIBBIE 18R
 2HR TIBBIE 16N

TC ADVANTAGE NHF AMF CAF
 SANDY BAR JEMINA 44K
 VERMILION YELLOWSTONE NHF AMF CAF
 WILBAR RUBY 161J
 NORTHERN IMPROVEMENT 4480 GF
 DURALTA 14C ECHO 32E
 HF MOST WANTED 46H
 HF TIBBIE 181L

BW	ADJ WW	ADJ YW	EPD'S	BW	WW	YW	MILK	TM	YG
83	731	1309		0.7	41	69	18	39	29



REF

HF KODIAK 250U



BULL • IMP 0050K • FEBRUARY 28 2000 • #1066283

RIVERBEND *Powerline* 0050

CONNEALY DATELINE
 CONNEALY FRONTLINE
 PLEASANT PILL OF CONANGA
 TC STOCKMAN 365
 LEACHMAN BLACKBIRD 8060
 LEACHMAN BLACKBIRD 3084

D H D TRAVELER 6807
 EILA EILA OF CONANGA
 TEHAMA BANDO 155
 PLEASANT PRIDE OF CONANGA
 TC STOCKMAN
 TC PRIDE 0014
 N BAR EMULATION EXT
 LEACHMAN BLACKBIRD 6002

BW	ADJ WW	ADJ YW	EPD'S	BW	WW	YW	MILK	TM	YG
				3.9	53	87	26	53	35



REF

RIVERBEND POWERLINE 0050



BULL • IMP 702T • JANUARY 1 2007 • #1485946

DUFF *Encore* 702

Q A S TRAVELER 23-4
 D H D TRAVELER 6807
 BEMINDFUL MAID D H D 0807
 O C C ANCHOR 771A
 O C C DIXIE ERICA 814G
 O C C DIXIE ERICA 764C

BAND 234 OF IDEAL 3163
 Q A S BLACKBIRD EVE 601 1
 PBC 707 1M F0203
 BEMINDFUL MAID OF R R 1079
 D H D TRAVELER 6807
 O C C JUANADA 709V
 N BAR EMULATION EXT
 O C C DIXIE ERICA 739A

BW	ADJ WW	ADJ YW	EPD'S	BW	WW	YW	MILK	TM	YG
				3.9	48	78	14	38	30



REF

DUFF ENCORE 702



Hamilton
FARMS

Mark your calendar

16th Annual

BULL
Sale

April 4

2011 • 1 pm

**at the Ranch,
Cochrane Alberta Canada**

Selling over 100 rugged yearling bulls sired by HF Kodiak 5R, HF Tiger 5T, HF El Tigre 28U, Southland Exclusive 62U, and other breed leading sires...Bulls available for preview December 13th 2010

