

SPRUCE VIEW KODIAK 72Y - LOT 72Y



SPRUCE VIEW KODIAK 72Y

72Y

WGO 72Y FEBRUARY 13 2011 #1611862
BW: 94LBS. DEC 1 WT: 1050LBS.

SANDY BAR ADVANTAGE 43M
HF KODIAK 5R AMF CAF NHF MAF
WILBAR RUBY 955N

S: GEIS KODIAK 42'07

DOUBLE AA BLACKMAN 252'96
GEIS GEORGINA 175'99
GEIS GEORGINA 160'93

TERRLENE PRIDE ACHIEVER 10B
GEIS ACHIEVER 73'98
SPRUCE VIEW JESTRESS 45A

D: SPRUCE VIEW JESTRESS 69K

ANGUS ACRES LANCER 60U
SPRUCE VIEW JESTRESS 28B
SPRUCE VIEW JESTRESS 34Y

A complete bull from a top end cow.



SPRUCE VIEW BANDY 73Y - LOT 73

SPRUCE VIEW BANDY 73Y

73Y

WGO 73Y FEBRUARY 13 2011 #1611863
BW: 94LBS. DEC 1 WT: 950LBS.

ANGUS ACRES BANDOLIER 75T
ANGUS ACRES BANDY 96X
ANGUS ACRES LADY 90R

S: ANGUS ACRES X BAND 128N

ANGUS ACRES DANCER 7Z
ANDERS BLACKBIRD 4C
SILVERBUCKLE BLACKBIRD 1R

LOMA LANES CRACKER JACK 4F
LOMA LANES CRACKER JACK 164J
ALTA BLACKCAP 164B

D: ANGUS ACRES MISS ROSEBUD 31L

RONAN BANDOLIER ESTON 34E
BRIMAR MISS ROSEBUD 49J
BRIMAR MISS ROSE 3E

He is all there in the right places.

SPRUCE VIEW KODIAK 78Y - LOT 78Y



SPRUCE VIEW KODIAK 78Y

78Y

WGO 78Y FEBRUARY 13 2011 #1611866

BW: 92LBS. DEC 1 WT: 1040LBS.

SANDY BAR ADVANTAGE 43M
HF KODIAK 5R AMF CAF NHF MAF
WILBAR RUBY 955N

S: GEIS KODIAK 42'07

DOUBLE AA BLACKMAN 252'96
GEIS GEORGINA 175'99
GEIS GEORGINA 160'93

KILMAURS DAQUANTAE 1H
GEIS DAQUANTAE 11'03
DOUBLE J ALLEGRA 230F

D: SPRUCE VIEW PRIDE 31R

BCC EILEENMERE LAD 23H
CL ANGUS PRIDE 16L
LAZY J PRIDE 19D

From a very solid cow.

SPRUCE VIEW BANDY 81Y

81Y

WGO 81Y FEBRUARY 13 2011 #1611869

BW: 92LBS. DEC 1 WT: 880LBS.

ANGUS ACRES BANDOLIER 75T
ANGUS ACRES BANDY 96X
ANGUS ACRES LADY 90R

S: ANGUS ACRES X BAND 128N

ANGUS ACRES DANCER 7Z
ANDERS BLACKBIRD 4C
SILVERBUCKLE BLACKBIRD 1R

DOUBLE AA BLACKMAN 252'96
GEIS BLACKMAN 7'00
GEIS PRIDE 209'96

D: SPRUCE VIEW PRIDE 3P

ANGUS ACRES JYM DANDY 93D
SPRUCE VIEW PRIDE 21G
SPRUCE VIEW PRIDE 48B

A Bandy – they are hard to fault.



SPRUCE VIEW KODIAK 33X - SOLD TO LLB ANGUS IN 2011 SALE



SPRUCE VIEW BARIN 83Y

83Y

WGO 83Y FEBRUARY 13 2011 #1611871
BW: 87LBS. DEC 1 WT: 820LBS.

BRESEE ACRES ROSES LAD
BRESEE ACRES WINNIES LAD 4
WINNIE OF REO 10

S: BAR HEART BARIN 325T

HAMBLIN NEW TREND 324L
HAMBLIN ERICA 325P
LITTLE BUFFALO ERICA 19D 18F

ANGUS ACRES JURASSIC 172C
ANGUS ACRES JURASSIC 69E
BUFFALO COULEE COUNTESS 279B

D: SPRUCE VIEW JESTRESS 82L

BLACKTOF MARSHALL 70B
SPRUCE VIEW JESTRESS 52G
SPRUCE VIEW JESTRESS 8U

Solid calf – can go on heifers or cows.

SPRUCE VIEW BARIN 85Y

85Y

WGO 85Y FEBRUARY 13 2011 #1611873
BW: 88LBS. DEC 1 WT: 860LBS.

BRESEE ACRES ROSES LAD
BRESEE ACRES WINNIES LAD 4
WINNIE OF REO 10

S: BAR HEART BARIN 325T

HAMBLIN NEW TREND 324L
HAMBLIN ERICA 325P
LITTLE BUFFALO ERICA 19D 18F

YOUNG DALE GABRIEL 7L
GEIS GABRIEL 126'04
GEIS GEORGINA 175'99

D: SPRUCE VIEW BLUEBIRD LASS 117U

ANGUS ACRES HEADS UP 121H
SPRUCE VIEW BLUEBIRD LASS 7M
SPRUCE VIEW BLUEBIRD LASS 109J

Nice calf again, these Barins can go either with heifers or cows.

SPRUCE VIEW PACESETTER 86Y

86Y

WGO 86Y FEBRUARY 13 2011 #1611874
BW: 90LBS. DEC 1 WT: 850LBS.

WILLABAR AMBUSH 45G
LOOKOUT PACESETTER 258M
GRASSY LANES MILLY 29U

S: FAIRMAC PACESETTER 30U

KEWETIN BLACKMAN ESTON 8B
FAIRMAC DUCHESS 72G
FAIRMAC DUCHESS 54'82

GEIS DAQUANTAE 11'03
SPRUCE VIEW RENOVATOR 51R
SPRUCE VIEW GEORGINA 14K

D: SPRUCE VIEW LENA 147U

GEIS ACHIEVER 73'98
CL ANGUS LENA 11K
SILVER DOME LENA 53B

A Pacesetter that will work.

SPRUCE VIEW PACESETTER 88Y

88Y

WGO 88Y FEBRUARY 15 2011 #1611876
BW: 95LBS. DEC 1 WT: 840LBS.

WILLABAR AMBUSH 45G
LOOKOUT PACESETTER 258M
GRASSY LANES MILLY 29U

S: FAIRMAC PACESETTER 30U

KEWETIN BLACKMAN ESTON 8B
FAIRMAC DUCHESS 72G
FAIRMAC DUCHESS 54'82

KILMAURS DAQUANTAE 1H
GEIS DAQUANTAE 11'03
DOUBLE J ALLEGRA 230F

D: SPRUCE VIEW JESTRESS 92U

LOOKOUT AMBUSH 259M
SPRUCE VIEW JESTRESS 52P
SPRUCE VIEW JESTRESS 132M

Pacesetters have thickness.

SPRUCE VIEW JOE 89Y

89Y

WGO 89Y FEBRUARY 15 2011 #1611877
BW: 86LBS. DEC 1 WT: 910LBS.

YOUNG DALE GABRIEL 7L
GEIS GABRIEL 126'04
GEIS GEORGINA 175'99

S: SPRUCE VIEW GABRIEL 115T

LOOKOUT AMBUSH 259M
SPRUCE VIEW FANNY 126P
SPRUCE VIEW FANNY 9M

DOUBLE AA BLACKMAN 252'96
GEIS BLACKMAN 7'00
GEIS PRIDE 209'96

D: SPRUCE VIEW TIPTOP 28S

HILL VIEW TROOPER 20H
COUNTRY LANE BAND TIPTOP 16L
COUNTRY LANE TIPTOP 7G

Pounds are what we get paid on.

SPRUCE VIEW KODIAK 90Y - LOT 90Y

SPRUCE VIEW KODIAK 90Y

90Y

WGO 90Y FEBRUARY 15 2011 #1611878
BW: 85LBS. DEC 1 WT: 975LBS.

SANDY BAR ADVANTAGE 43M
HF KODIAK 5R AMF CAF NHF MAF
WILBAR RUBY 955N

S: GEIS KODIAK 42'07

DOUBLE AA BLACKMAN 252'96
GEIS GEORGINA 175'99
GEIS GEORGINA 160'93

GEIS DAQUANTAE 11'03
SPRUCE VIEW RENOVATOR 51R
SPRUCE VIEW GEORGINA 14K

D: SPRUCE VIEW GEORGINA 62T

BCC EILEENMERE LAD 23H
SPRUCE VIEW GEORGINA 18M
SPRUCE VIEW GEORGINA 24F

Kodiaks seem to have that little extra.

SPRUCE VIEW ADVENTURE 91Y

WGO 91Y FEBRUARY 15 2011 #1652860
BW: 82LBS. DEC 1 WT: 850LBS.

91Y

COLUMBUS OF WYE
COLUMBUS ADVENTURE 310
PRIM LASSIE 21

S: PROSPECT ADVENTURE 43G

BARDOLIER OF EILEENMERE 4Y
MISS MORRISON DON WOOD 43 72
MISS MORRISON DON WOOD 52'69

HF KODIAK 5R AMF CAF NHF MAF
GEIS KODIAK 42'07
GEIS GEORGINA 175'99

D: SPRUCE VIEW BLACKBIRD 22W

LOOKOUT AMBUSH 259M
SPRUCE VIEW BLACKBIRD 46P
SPRUCE VIEW BLACKBIRD 27M

Adventures weigh up, have hair and made for heifers.

SPRUCE VIEW JOE 95Y

WGO 95Y FEBRUARY 16 2011 #1611882
BW: 85LBS. DEC 1 WT: 990LBS.

95Y

YOUNG DALE GABRIEL 7L
GEIS GABRIEL 126'04
GEIS GEORGINA 175'99

S: SPRUCE VIEW GABRIEL 115T

LOOKOUT AMBUSH 259M
SPRUCE VIEW FANNY 126P
SPRUCE VIEW FANNY 9M

CRESCENT CREEK 06 RITO 50L
BAR-E-L RHETT BUTLER 129R
BAR-E-L 365 HUDE 123J

D: SPRUCE VIEW MISSIE 197T

ANGUS ACRES HEADS UP 121H
SPRUCE VIEW MISSIE 26M
SPRUCE VIEW MISSIE 75G

Most Joes are well made.

SPRUCE VIEW KODIAK 100Y - LOT 100Y



SPRUCE VIEW KODIAK 100Y

WGO 100Y FEBRUARY 17 2011 #1611887
BW: 83LBS. DEC 1 WT: 975LBS.

100Y

SANDY BAR ADVANTAGE 43M
HF KODIAK 5R AMF CAF NHF MAF
WILBAR RUBY 955N

S: GEIS KODIAK 42'07

DOUBLE AA BLACKMAN 252'96
GEIS GEORGINA 175'99
GEIS GEORGINA 160'93

KILMAURS DAQUANTAE 1H
GEIS DAQUANTAE 11'03
DOUBLE J ALLEGRA 230F

D: SPRUCE VIEW BLACKWOOD 43U

BLACKTOF REVOLUTION 24N
SPRUCE VIEW BLACKWOOD 130R
SPRUCE VIEW BLACKWOOD 61N

Kodiak from a never miss cow.

SPRUCE VIEW RENOVATOR 101Y

101Y

WGO 101Y FEBRUARY 17 2011 #1611888

BW: 81LBS. DEC 1 WT: 760LBS.

GEIS DAQUANTAE 11'03
SPRUCE VIEW RENOVATOR 51R
SPRUCE VIEW GEORGINA 14K

GEIS GABRIEL 126'04
SPRUCE VIEW GABRIEL 115T
SPRUCE VIEW FANNY 126P

S: SPRUCE VIEW RENOVATOR 43T **D: SPRUCE VIEW GEORGINA 109W**
GEIS BLACKMAN 7'00 BCC EILEENMERE LAD 23H
SPRUCE VIEW BLACKWOOD 61N SPRUCE VIEW GEORGINA 29M
SPRUCE VIEW BLACKWOOD 18B SPRUCE VIEW GEORGINA 93X

Renovator – nice package, heifer type.

SPRUCE VIEW BARIN 104Y

104Y

WGO 104Y FEBRUARY 17 2011 #1611891

BW: 94LBS. DEC 1 WT: 800LBS.

BRESEE ACRES ROSES LAD
BRESEE ACRES WINNIES LAD 4
WINNIE OF REO 10

GEIS MAXIMUM 26'95
GEIS MAXIMUM 50'05
GEIS LASS 84'98

S: BAR HEART BARIN 325T **D: SPRUCE VIEW JESTRESS 130T**
HAMBLIN NEW TREND 324L BCC EILEENMERE LAD 23H
HAMBLIN ERICA 325P SPRUCE VIEW JESTRESS 64M
LITTLE BUFFALO ERICA 19D 18F SPRUCE VIEW JESTRESS 52G

Barin from a cow that has performance.

SPRUCE VIEW RENOVATOR 105Y

105Y

WGO 105Y FEBRUARY 17 2011 #1611893

BW: 83LBS. DEC 1 WT: 860LBS.

GEIS DAQUANTAE 11'03
SPRUCE VIEW RENOVATOR 51R
SPRUCE VIEW GEORGINA 14K

YOUNG DALE GABRIEL 7L
GEIS GABRIEL 126'04
GEIS GEORGINA 175'99

S: SPRUCE VIEW RENOVATOR 43T **D: SPRUCE VIEW BLACKCAP 191W**
GEIS BLACKMAN 7'00 BCC EILEENMERE LAD 23H
SPRUCE VIEW BLACKWOOD 61N SPRUCE VIEW BLACKCAP 119N
SPRUCE VIEW BLACKWOOD 18B SPRUCE VIEW BLACKCAP 80D

We used these Renovators on our heifers – good results.

SPRUCE VIEW BANDY 107Y

107Y

WGO 107Y FEBRUARY 18 2011 #1611895

BW: 92LBS. DEC 1 WT: 950LBS.

ANGUS ACRES BANDOLIER 75T
ANGUS ACRES BANDY 96X
ANGUS ACRES LADY 90R

TERRLENE PRIDE ACHIEVER 10B
GEIS ACHIEVER 73'98
SPRUCE VIEW JESTRESS 45A

S: ANGUS ACRES X BAND 128N **D: CL ANGUS LENA 11K**
ANGUS ACRES DANCER 7Z SILVER DOME WINDER SLEAK 21Z
ANDERS BLACKBIRD 4C SILVER DOME LENA 53B
SILVERBUCKLE BLACKBIRD 1R RONAN LENA 53Z

From a cow that you always wish you had more of.

SPRUCE VIEW KODIAK 109Y - LOT 109Y



SPRUCE VIEW KODIAK 109Y

WGO 109Y FEBRUARY 19 2011 #1611896
BW: 96LBS. DEC 1 WT: 1000LBS.

109Y

SANDY BAR ADVANTAGE 43M
HF KODIAK 5R AMF CAF NHF MAF
WILBAR RUBY 955N

S: GEIS KODIAK 42'07

DOUBLE AA BLACKMAN 252'96
GEIS GEORGINA 175'99
GEIS GEORGINA 160'93

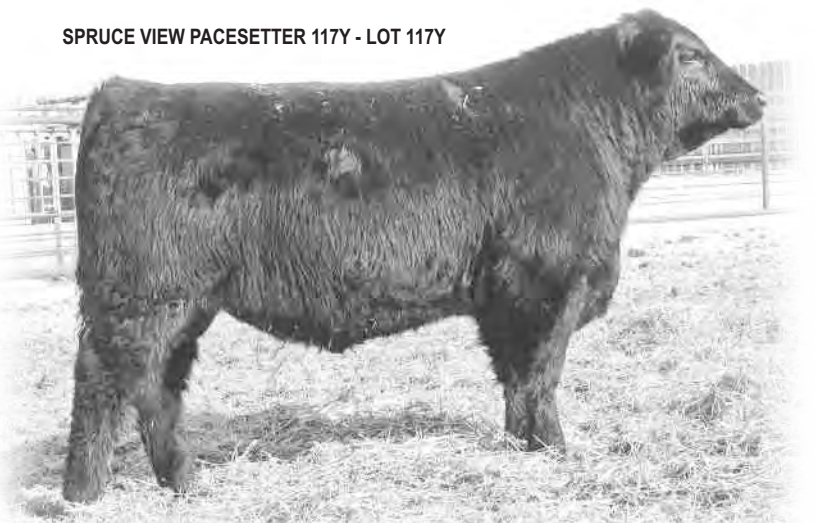
YOUNG DALE GABRIEL 7L
GEIS GABRIEL 126'04
GEIS GEORGINA 175'99

D: SPRUCE VIEW GEORGINA 214U

ANGUS ACRES JYM DANDY 93D
SPRUCE VIEW GEORGINA 14K
SPRUCE VIEW GEORGINA 93X

Good bull, terrific gain – longer, thicker type.

SPRUCE VIEW PACESETTER 117Y - LOT 117Y



SPRUCE VIEW PACESETTER 117Y

WGO 117Y FEBRUARY 21 2011 #1611903
BW: 92LBS. DEC 1 WT: 840LBS.

117Y

WILLABAR AMBUSH 45G
LOOKOUT PACESETTER 258M
GRASSY LANES MILLY 29U

S: FAIRMAC PACESETTER 30U

KEWETIN BLACKMAN ESTON 8B
FAIRMAC DUCHESS 72G
FAIRMAC DUCHESS 54'82

GEIS DAQUANTAE 11'03
SPRUCE VIEW RENOVATOR 51R
SPRUCE VIEW GEORGINA 14K

D: SPRUCE VIEW PATRICIA 162U

BCC EILEENMERE LAD 23H
SPRUCE VIEW PATRICIA 63P
CL ANGUS PATRICIA 10K

A Pacesetter with a good quarter, most do.

SPRUCE VIEW BANDY 119Y

WGO 119Y FEBRUARY 21 2011 #1611905
BW: 93LBS. DEC 1 WT: 950LBS.

119Y

ANGUS ACRES BANDOLIER 75T
ANGUS ACRES BANDY 96X
ANGUS ACRES LADY 90R

S: ANGUS ACRES X BAND 128N

ANGUS ACRES DANCER 7Z
ANDERS BLACKBIRD 4C
SILVERBUCKLE BLACKBIRD 1R

WILLABAR AMBUSH 45G
LOOKOUT AMBUSH 259M
WILLABAR COUNTESS 187F

D: SPRUCE VIEW BLACKBIRD 46P

ANGUS ACRES HEADS UP 121H
SPRUCE VIEW BLACKBIRD 27M
SPRUCE VIEW BLACKBIRD 19G

A very nest bull from a faultless cow.

SPRUCE VIEW BARIN 122Y - LOT 122Y



SPRUCE VIEW BARIN 122Y

WGO 122Y FEBRUARY 21 2011 #1611907
BW: 75LBS. DEC 1 WT: 840LBS.

122Y

BRESEE ACRES ROSES LAD
BRESEE ACRES WINNIES LAD 4
WINNIE OF REO 10

S: BAR HEART BARIN 325T

HAMBLIN NEW TREND 324L
HAMBLIN ERICA 325P
LITTLE BUFFALO ERICA 19D 18F

LAMBS OVERDRIVE 45E
BCC SUPERBULL 19M
BCC BLACK VELVET 11H

D: SPRUCE VIEW PRIDE 171R

ANGUS ACRES JYM DANDY 93D
SPRUCE VIEW PRIDE 66K
SPRUCE VIEW PRIDE 87C

Here is one you might consider for heifers – good gain.

SPRUCE VIEW PACESETTER 128Y

WGO 128Y FEBRUARY 23 2011 #1611913
BW: 91LBS. DEC 1 WT: 900LBS.

128Y

WILLABAR AMBUSH 45G
LOOKOUT PACESETTER 258M
GRASSY LANES MILLY 29U

S: FAIRMAC PACESETTER 30U

KEWETIN BLACKMAN ESTON 8B
FAIRMAC DUCHESS 72G
FAIRMAC DUCHESS 54'82

KILMAURS DAQUANTAE 1H
GEIS DAQUANTAE 11'03
DOUBLE J ALLEGRA 230F

D: SPRUCE VIEW BRIDE 101R

GEIS ACHIEVER 73'98
SPRUCE VIEW BRIDE 67L
SPRUCE VIEW BRIDE 20H

Pacesetters are hard to fault.



SPRUCE VIEW KODIAK 129Y

129Y

WGO 129Y FEBRUARY 12 2011 #1611861
BW: 84LBS. DEC 1 WT: 960LBS.

SANDY BAR ADVANTAGE 43M
HF KODIAK 5R AMF CAF NHF MAF
WILBAR RUBY 955N

GEIS DAQUANTAE 11'03
SPRUCE VIEW RENOVATOR 51R
SPRUCE VIEW GEORGINA 14K

S: GEIS KODIAK 42'07

D: SPRUCE VIEW BLACKCAP 25U

DOUBLE AA BLACKMAN 252'96
GEIS GEORGINA 175'99
GEIS GEORGINA 160'93

BCC EILEENMERE LAD 23H
SPRUCE VIEW BLACKCAP 89M
SPRUCE VIEW BLACKCAP 8F

From a smaller framed cow, she is a producer.

SPRUCE VIEW RENOVATOR 132Y

132Y

WGO 132Y FEBRUARY 24 2011 #1611916
BW: 75LBS. DEC 1 WT: 750LBS.

GEIS DAQUANTAE 11'03
SPRUCE VIEW RENOVATOR 51R
SPRUCE VIEW GEORGINA 14K

BCC SUPERBULL 19M
SPRUCE VIEW OVERDRIVE 63R
SPRUCE VIEW FANNY 40H

S: SPRUCE VIEW RENOVATOR 43T

D: SPRUCE VIEW GEORGINA 68W

GEIS BLACKMAN 7'00
SPRUCE VIEW BLACKWOOD 61N
SPRUCE VIEW BLACKWOOD 18B

GEIS BLACKMAN 7'00
SPRUCE VIEW GEORGINA 192R
SPRUCE VIEW GEORGINA 26G

Used these Renovators on our heifers, no problems. Good, thick cattle but smaller framed.

SPRUCE VIEW JOE 134Y

134Y

WGO 134Y FEBRUARY 25 2011 #1611918
BW: 85LBS. DEC 1 WT: 960LBS.

YOUNG DALE GABRIEL 7L
GEIS GABRIEL 126'04
GEIS GEORGINA 175'99

KBJ CONQUOR ALL 447J
KBJ CONQUOR 604M
KBJ BLACKCAP 488H

S: SPRUCE VIEW GABRIEL 115T

D: SPRUCE VIEW BLCP MISSIE 155P

LOOKOUT AMBUSH 259M
SPRUCE VIEW FANNY 126P
SPRUCE VIEW FANNY 9M

ANGUS ACRES RENE ESTON 181C
SPRUCE VIEW BLCKCAP MISSIE 85L
SPRUCE VIEW BLACKCAP MISSIE 10

From a slightly smaller, smooth cow.



SPRUCE VIEW BANDY 139Y

WGO 139Y FEBRUARY 25 2011 #1611922
BW: 95LBS. DEC 1 WT: 1030LBS.

139Y

ANGUS ACRES BANDOLIER 75T	KILMAURS DAQUANTAE 1H
ANGUS ACRES BANDY 96X	GEIS DAQUANTAE 11'03
ANGUS ACRES LADY 90R	DOUBLE J ALLEGRA 230F
S: ANGUS ACRES X BAND 128N	D: SPRUCE VIEW BLACKBIRD 5R
ANGUS ACRES DANCER 7Z	GEIS ACHIEVER 73'98
ANDERS BLACKBIRD 4C	SPRUCE VIEW BLACKBIRD 86M
SILVERBUCKLE BLACKBIRD 1R	SPRUCE VIEW BLACKBIRD 61J

These Bandys are made for cows, this is a good one.

SPRUCE VIEW JOE 141Y

WGO 141Y FEBRUARY 26 2011 #1611924
BW: 92LBS. DEC 1 WT: 800LBS.

141Y

YOUNG DALE GABRIEL 7L	BCC SUPERBULL 19M
GEIS GABRIEL 126'04	SPRUCE VIEW OVERDRIVE 63R
GEIS GEORGINA 175'99	SPRUCE VIEW FANNY 40H
S: SPRUCE VIEW GABRIEL 115T	D: SPRUCE VIEW BLACKWOOD 13U
LOOKOUT AMBUSH 259M	CRESCENT CREEK CHIEF 45L
SPRUCE VIEW FANNY 126P	SPRUCE VIEW BLACKWOOD 62R
SPRUCE VIEW FANNY 9M	SPRUCE VIEW BLACKWOOD 26L

Good, solid bull from a younger mother.

SPRUCE VIEW BARIN 144Y

WGO 144Y FEBRUARY 28 2011 #1611927
BW: 94LBS. DEC 1 WT: 900LBS.

144Y

BRESEE ACRES ROSES LAD	APEX STOCKMAN 061
BRESEE ACRES WINNIES LAD 4	WIWA CREEK STOCKMAN 38'97
WINNIE OF REO 10	WIWA CREEK JENNIFER 4'83
S: BAR HEART BARIN 325T	D: CL ANGUS BLACK ANGEL 6J
HAMBLIN NEW TREND 324L	SPRUCE VIEW LANCER 3C
HAMBLIN ERICA 325P	CL ANGUS BLACK ANGEL 4G
LITTLE BUFFALO ERICA 19D 18F	KEWETIN BLACK ANGEL 7A

Bigger framed bull from a good old cow.

SPRUCE VIEW PACESETTER 150Y

150Y

WGO 150Y MARCH 01 2011 #1611931
BW: 92LBS. DEC 1 WT: 875LBS.

WILLABAR AMBUSH 45G
LOOKOUT PACESETTER 258M
GRASSY LANES MILLY 29U

S: FAIRMAC PACESETTER 30U

KEWETIN BLACKMAN ESTON 8B
FAIRMAC DUCHESS 72G
FAIRMAC DUCHESS 54'82

DOUBLE AA BLACKMAN 252'96
GEIS BLACKMAN 7'00
GEIS PRIDE 209'96

D: SPRUCE VIEW JESTRESS 48R

BLACKTOF MARSHALL 70B
SPRUCE VIEW JESTRESS 30H
SPRUCE VIEW JESTRESS 92D

A Pacesetter – he will be thick and good.

SPRUCE VIEW JOE 153Y

153Y

WGO 153Y MARCH 02 2011 #1611934
BW: 92LBS. DEC 1 WT: 910LBS.

YOUNG DALE GABRIEL 7L
GEIS GABRIEL 126'04
GEIS GEORGINA 175'99

S: SPRUCE VIEW GABRIEL 115T

LOOKOUT AMBUSH 259M
SPRUCE VIEW FANNY 126P
SPRUCE VIEW FANNY 9M

GEIS MAXIMUM 26'95
GEIS MAXIMUM 50'05
GEIS LASS 84'98

D: SPRUCE VIEW GEORGINA 136U

LOOKOUT AMBUSH 259M
SPRUCE VIEW GEORGINA 121P
SPRUCE VIEW GEORGINA 63M

From a solid cow.

SPRUCE VIEW PACESETTER 156Y

156Y

WGO 156Y MARCH 04 2011 #1611936
BW: 93LBS. DEC 1 WT: 850LBS.

WILLABAR AMBUSH 45G
LOOKOUT PACESETTER 258M
GRASSY LANES MILLY 29U

S: FAIRMAC PACESETTER 30U

KEWETIN BLACKMAN ESTON 8B
FAIRMAC DUCHESS 72G
FAIRMAC DUCHESS 54'82

DONMAC EXTRA 90G
RONAN R EXTRADITION 505R
RONAN BARBARA ROSE 1G

D: SPRUCE VIEW GEORGINA 11T

GEIS DAQUANTAE 11'03
SPRUCE VIEW GEORGINA 39R
SPRUCE VIEW GEORGINA 66B

Good solid bull.



SPRUCE VIEW GABRIEL 114X - SOLD TO MINBURN ANGUS IN 2011 SALE



SPRUCE VIEW PACESETTER 159Y

159Y

WGO 159Y MARCH 05 2011 #1611938
BW: 96LBS. DEC 1 WT: 1025LBS.

WILLABAR AMBUSH 45G
LOOKOUT PACESETTER 258M
GRASSY LANES MILLY 29U

S: FAIRMAC PACESETTER 30U

KEWETIN BLACKMAN ESTON 8B
FAIRMAC DUCHESS 72G
FAIRMAC DUCHESS 54'82

GEIS MAXIMUM 26'95
GEIS MAXIMUM 123'00
GEIS BAYBERRY 196'96

D: GEIS MISSIE 83'02

WIWA CREEK ATLAS 10'89
RON'S MISSIE 34C
CALLAMERE MISSIE 10M

Wow – Here is a bull. Dallas is proud of this one.

SPRUCE VIEW JOE 161Y

161Y

WGO 161Y MARCH 06 2011 #1611940
BW: 92LBS. DEC 1 WT: 910LBS.

YOUNG DALE GABRIEL 7L
GEIS GABRIEL 126'04
GEIS GEORGINA 175'99

S: SPRUCE VIEW GABRIEL 115T

LOOKOUT AMBUSH 259M
SPRUCE VIEW FANNY 126P
SPRUCE VIEW FANNY 9M

GEIS DAQUANTAE 11'03
SPRUCE VIEW RENOVATOR 51R
SPRUCE VIEW GEORGINA 14K

D: SPRUCE VIEW BLACKWOOD 121T

GEIS BLACKMAN 7'00
SPRUCE VIEW BLACKWOOD 6N
SPRUCE VIEW BLACKWOOD 64D

From one of our favorite cows.

SPRUCE VIEW JOE 162Y

162Y

WGO 162Y MARCH 06 2011 #1611941
BW: 96LBS. DEC 1 WT: 975LBS.

YOUNG DALE GABRIEL 7L
GEIS GABRIEL 126'04
GEIS GEORGINA 175'99

S: SPRUCE VIEW GABRIEL 115T

LOOKOUT AMBUSH 259M
SPRUCE VIEW FANNY 126P
SPRUCE VIEW FANNY 9M

ANGUS ACRES BANDY 214Y
ANGUS ACRES JYM DANDY 93D
ANGUS ACRES LASSIE 43B

D: SPRUCE VIEW ERROLLINE 39H

ANGUS ACRES LANCER 60U
SPRUCE VIEW ERROLLINE 30B
SPRUCE VIEW ERROLLINE 73Y

From a slightly bigger framed cow.

SPRUCE VIEW PACESETTER 164Y

164Y

WGO 164Y MARCH 07 2011 #1611943
BW: 94LBS. DEC 1 WT: 860LBS.

WILLABAR AMBUSH 45G
LOOKOUT PACESETTER 258M
GRASSY LANES MILLY 29U

TC FREEDOM 104 AMF CAF NHF
TC STOUT 407 AMF NHF
TC PRIDE 2053

S: FAIRMAC PACESETTER 30U

D: SPRUCE VIEW ANNNE 107T

KEWETIN BLACKMAN ESTON 8B
FAIRMAC DUCHESS 72G
FAIRMAC DUCHESS 54'82

SPRUCE VIEW LANCER 4F
RIVERCREST ANNE 12J
RIVERCREST BLUE ANNE 18D

Smoothly made – turn out and let him work.

SPRUCE VIEW JOE 165Y

165Y

WGO 165Y MARCH 07 2011 #1611944
BW: 92LBS. DEC 1 WT: 850LBS

YOUNG DALE GABRIEL 7L
GEIS GABRIEL 126'04
GEIS GEORGINA 175'99

DOUBLE AA BLACKMAN 252'96
GEIS BLACKMAN 7'00
GEIS PRIDE 209'96

S: SPRUCE VIEW GABRIEL 115T

D: SPRUCE VIEW MISSIE 83N

LOOKOUT AMBUSH 259M
SPRUCE VIEW FANNY 126P
SPRUCE VIEW FANNY 9M

ANGUS ACRES JURASSIC 69E
SPRUCE VIEW MISSIE 61H
SPRUCE VIEW MISSIE 3B

Another Joe – Turn them out and they will add the pounds.

SPRUCE VIEW PACESETTER 167Y

167Y

WGO 167Y MARCH 08 2011 #1611946
BW: 95LBS. DEC 1 WT: 930LBS.

WILLABAR AMBUSH 45G
LOOKOUT PACESETTER 258M
GRASSY LANES MILLY 29U

CRESCENT CREEK 06 RITO 50L
BAR-E-L RHETT BUTLER 129R
BAR-E-L 365 HUDE 123J

S: FAIRMAC PACESETTER 30U

D: SPRUCE VIEW LENA 172T

KEWETIN BLACKMAN ESTON 8B
FAIRMAC DUCHESS 72G
FAIRMAC DUCHESS 54'82

GEIS ACHIEVER 73'98
CL ANGUS LENA 11K
SILVER DOME LENA 53B

Again a Pacesetter with lots of middle.



SPRUCE VIEW GABRIEL 142X - SOLD TO GARY HRYCUN IN 2011 SALE

SPRUCE VIEW KODIAK 171Y

171Y

WGO 171Y MARCH 11 2011 #1611950
BW: 92LBS. DEC 1 WT: 950LBS.

SANDY BAR ADVANTAGE 43M
HF KODIAK 5R AMF CAF NHF MAF
WILBAR RUBY 955N

YOUNG DALE GABRIEL 7L
GEIS GABRIEL 126'04
GEIS GEORGINA 175'99

S: GEIS KODIAK 42'07

D: SPRUCE VIEW BLACKBIRD 70T

DOUBLE AA BLACKMAN 252'96
GEIS GEORGINA 175'99
GEIS GEORGINA 160'93

ANGUS ACRES JYM DANDY 93D
SPRUCE VIEW BLACKBIRD 14J
SPRUCE VIEW BLACKBIRD 95C

These Kodiaks will add frame and pounds.

SPRUCE VIEW BANDY 172Y

172Y

WGO 172Y MARCH 14 2011 #1611951
BW: 92LBS. DEC 1 WT: 850LBS.

ANGUS ACRES BANDOLIER 75T
ANGUS ACRES BANDY 96X
ANGUS ACRES LADY 90R

DONMAC EXTRA 90G
RONAN R EXTRADITION 505R
RONAN BARBARA ROSE 1G

S: ANGUS ACRES X BAND 128N

D: SPRUCE VIEW GEORGINA 5T

ANGUS ACRES DANCER 7Z
ANDERS BLACKBIRD 4C
SILVERBUCKLE BLACKBIRD 1R

CRESCENT CREEK CHIEF 45L
SPRUCE VIEW GEORGINA 110R
SPRUCE VIEW GEORGINA 18M

A thick made Bandy – most are. From a solid bigger cow.

SPRUCE VIEW BANDY 174Y

174Y

WGO 174Y MARCH 16 2011 #1611953
BW: 92LBS. DEC 1 WT: 850LBS.

ANGUS ACRES BANDOLIER 75T	BJ JACK DANIELS 25'92
ANGUS ACRES BANDY 96X	BCC EILEENMERE LAD 23H
ANGUS ACRES LADY 90R	BJ LADY WREN 13'90
S: ANGUS ACRES X BAND 128N	D: SPRUCE VIEW JESTRESS 4M
ANGUS ACRES DANCER 7Z	WILLABAR JIMBO 128B
ANDERS BLACKBIRD 4C	SPRUCE VIEW JESTRESS 28D
SILVERBUCKLE BLACKBIRD 1R	SPRUCE VIEW JESTRESS 28B

From a slightly larger framed cow, he will work.

SPRUCE VIEW BANDY 177Y

177Y

WGO 177Y MARCH 17 2011 #1611956
BW: 94LBS. DEC 1 WT: 870LBS.

ANGUS ACRES BANDOLIER 75T	WILLABAR AMBUSH 45G
ANGUS ACRES BANDY 96X	LOOKOUT AMBUSH 259M
ANGUS ACRES LADY 90R	WILLABAR COUNTESS 187F
S: ANGUS ACRES X BAND 128N	D: SPRUCE VIEW GEORGINA 121P
ANGUS ACRES DANCER 7Z	WAVENY REVOLUTION 80J
ANDERS BLACKBIRD 4C	SPRUCE VIEW GEORGINA 63M
SILVERBUCKLE BLACKBIRD 1R	SPRUCE VIEW GEORGINA 14K

These Bandys are wide across the top which means pounds.

SPRUCE VIEW RENOVATOR 180Y

180Y

WGO 180Y MARCH 19 2011 #1611959
BW: 82LBS. DEC 1 WT: 750LBS.

GEIS DAQUANTAE 11'03	GEIS MAXIMUM 50'05
SPRUCE VIEW RENOVATOR 51R	SPRUCE VIEW MAX 40T
SPRUCE VIEW GEORGINA 14K	SPRUCE VIEW GEORGINA 27E
S: SPRUCE VIEW RENOVATOR 43T	D: SPRUCE VIEW BRIDE 204W
GEIS BLACKMAN 7'00	GEIS DAQUANTAE 11'03
SPRUCE VIEW BLACKWOOD 61N	SPRUCE VIEW BRIDE 101R
SPRUCE VIEW BLACKWOOD 18B	SPRUCE VIEW BRIDE 67L

Heifer type – they grow out with thickness.

SPRUCE VIEW JOE 183Y

183Y

WGO 183Y MARCH 21 2011 #1611962
BW: 92LBS. DEC 1 WT: 850LBS.

YOUNG DALE GABRIEL 7L (EE)	DWAJO CHIEF 92E
GEIS GABRIEL 126'04	CRESCENT CREEK CHIEF 45L
GEIS GEORGINA 175'99	ANGUS ACRES LAWN 85Z
S: SPRUCE VIEW GABRIEL 115T	D: SPRUCE VIEW GEORGINA 110R
LOOKOUT AMBUSH 259M	BCC EILEENMERE LAD 23H
SPRUCE VIEW FANNY 126P	SPRUCE VIEW GEORGINA 18M
SPRUCE VIEW FANNY 9M	SPRUCE VIEW GEORGINA 24F

Long type with good quarter. He is a Joe.

SPRUCE VIEW RENOVATOR 187Y

187Y

WGO 187Y MARCH 25 2011 #1611964

BW: 81LBS. DEC 1 WT: 825LBS.

GEIS DAQUANTAE 11'03

SPRUCE VIEW RENOVATOR 51R

SPRUCE VIEW GEORGINA 14K

S: SPRUCE VIEW RENOVATOR 43T

GEIS BLACKMAN 7'00

SPRUCE VIEW BLACKWOOD 61N

SPRUCE VIEW BLACKWOOD 18B

COLUMBUS ADVENTURE 310

PROSPECT ADVENTURE 43G

MISS MORRISON DON WOOD 43 72

D: SPRUCE VIEW FANNY 12W

SPRUCE VIEW OVERDRIVE 63R

SPRUCE VIEW FANNY 178T

SPRUCE VIEW FANNY 19P

Renovator from a first calver, they gain.

SPRUCE VIEW RENOVATOR 188Y

188Y

WGO 188Y MARCH 29 2011 #1611965

BW: 80LBS. DEC 1 WT: 810LBS.

GEIS DAQUANTAE 11'03

SPRUCE VIEW RENOVATOR 51R

SPRUCE VIEW GEORGINA 14K

S: SPRUCE VIEW RENOVATOR 43T

GEIS BLACKMAN 7'00

SPRUCE VIEW BLACKWOOD 61N

SPRUCE VIEW BLACKWOOD 18B

GEIS GABRIEL 126'04

SPRUCE VIEW GABRIEL 115T

SPRUCE VIEW FANNY 126P

D: SPRUCE VIEW JESTRESS 35W

BLACKTOF REVOLUTION 24N

SPRUCE VIEW JESTRESS 130S

SPRUCE VIEW JESTRESS 38P

Not only easy calvers but good gains on pasture too.

**PURCHASING
A HERD BULL IS
AS SIMPLE AS
ABC**

TERMS & CONDITIONS

CATTLE INSPECTION: All cattle will carry ear tags corresponding to lot numbers. We encourage inspection of the sale cattle at the farm any time prior to the sale.

ANNOUNCEMENTS: Announcements made from the auction block on sale day shall take precedence over printed material in the catalogue. It is therefore the buyer's responsibility to pay attention to any such announcements.

HEALTH: Overall herd health is excellent. Official vaccinates are designated.

PREGNANCY: All bred females will have been examined prior to the sale.

EXPORT SALES: PLEASE MAKE YOURSELF FAMILIAR WITH THE HEALTH REQUIREMENTS IN YOUR STATE. Bangs vaccinates are noted as O.C.V. In the event that animals are sold to the continental U.S.A., the animals will be kept under excellent care, health tested and have export health charts supplied at no extra charge. Release of export animals will only take place upon full and complete payment of such animals.

AGENT ONLY: It is clearly understood that the sales management is acting only as intermediary between buyer and seller and is not responsible for any failure by either party to live up to their obligations. Any legal action that may in extreme cases have to be taken must be between the buyer and seller and will in no way involve sales management.

MAIL/PHONE BIDS: Mail or phone bids may be entrusted to any of the sales staff or OBI.

INSURANCE: Insurance agents will be present at the sale to cover all insurance needs.

ACCIDENTS: Although every precaution will be taken to protect the safety and comfort of buyers. Neither sales management, auctioneer or the owner assumes any responsibility in these matters and disclaims any liability or otherwise in the event of accident or loss of property.

TERMS OF SALE: Terms of sale are cash or cheque at par, payable sale day. U.S. funds will be accepted at the current rate of exchange. No release will be given without satisfactory settlement. Registration papers will be transferred upon full payment.

HANDLING: Each animal becomes the property of the purchaser when sold and will be maintained at the purchaser's risk. Due care will be exercised to ensure the animals' safe welfare.

ALL PERSONS: All persons who attend the sale do so at their own risk and the owners, management and sale staff assume no liability, legal or otherwise, for property loss or for any accidents that may occur.



WGO 47Y



OPTIMAL BOVINES INC.

#407, 4808 Ross St.
Red Deer, AB
T4N 1X5



WGO 63Y

CANADA POSTES
POST CANADA



Postage paid Port payé
Addressed Média poste
Admail avec adresse

0 2 7 1 6 9 3 3

PURCHASING A HERD BULL IS AS SIMPLE AS ABC