

GRAND BONNIE

WINDY WILLOWS BULL & FEMALE SALE

TUESDAY APRIL 3, 2012 ♦ 1:00 PM
WINDY WILLOWS FARMS, HODGEVILLE, SK
(16 MILES SOUTH OF HWY #1 ON HWY #19)



Join us for complimentary
"Beef Barbecue Lunch"
Last Year's Reviews Were Great!

View Catalogue online:
www.optimalbovines.com
www.cattlemanagement.ca



OFFERING: 88 LOTS

- 61 Black Angus Yearling Bulls
- 12 Red Angus Yearling Bulls
- 15 Angus Open Heifers



You Won't Know - If You Don't Go!

Auctioneer: Steve Dorran(760) 972-7736
Ringmen:
Mark Stock(306) 678-4811
Bob Toner.....(306) 834-7385
Accommodations:
Hodgeville Hub (Inn)(306) 677-7890
Super 8, Swift Current(306) 778-6088
Best Western, Swift Current(306) 773-4660
Travelodge, Swift Current.....(306) 773-3101
Insurance: Earl Haubrich, EMTAAgencies(306) 677-2207



OPTIMAL BOVINES INC.

Rob Holowaychuk
#407, 4808 Ross St.
Red Deer, AB T4N 1X5
Ph: (403) 341-5098
Fax: (403) 343-6133
Bob Toner: (306) 834-7385
Kirk Hurlburt: (306) 222-8210
Luc Noiseux: (450) 379-9989
email: o.b.i@shaw.ca
www.cattlemanagement.ca
www.optimalbovines.com

SALE DAY PHONES: COLLIN'S CELL: (306) 677-7544
ROB'S CELL: (780) 916-2628 • BOB'S CELL: (306) 834-7385

THE WINDY WILLOWS PROGRAM

Useful information: It is our goal to provide you with information that will help you make accurate bull selection decisions, whatever the traits you are interested in.

Calving Ease:	birth wts, EPDs and CE & CE Elite designations
Growth:	adjusted wts, EPDs and current wts.
Maternal:	Milk EPDs
Carcass:	ultrasound ribeye area, fat thickness and marbling
Fertility:	scrotal circumferences and breeding soundness exam

Current weights and scrotal circumferences will be available sale day or call us!
We'd be happy to show you the dams of the bulls selling; just ask us!

Calving Ease and Birth Weight: Our breeding program has emphasized reasonable birth weights and the average birth weight of our calves has decreased markedly in recent years. Our cows and heifers calve without problems. In 2010 and 2011 we calved a total of 115 heifers and we assisted only three. **You can select calving ease bulls from our program with confidence.**

Bull Development: All of our bulls are grown on grass and mother's milk prior to weaning. They receive no creep feed! After weaning the bulls from both herds are fed together in a large pen and developed on a high protein cereal silage and alfalfa hay ration with mineral/vitamin fortified 14% pellets and rolled barley. This enables the bulls to express their growth potential without excessive fattening.

Customer Service: We would be pleased to assist customers with their bull selections, just ask us! Remember too, we offer **free delivery** within 200 miles or **save \$50 if you pick up your bull on sale day**. We stand behind our bulls 100%. We have confidence in our bulls, but if you have a problem, call us, we want to help!

Sale Eligibility: Only the best bulls sell. Each bull must meet our expectations before he can meet yours guaranteed!

Affordable: Real good bulls at prices you can live with; you get exceptional value from our bulls!

WELCOME TO THE NEW WINDY WILLOWS & GUEST BULL & FEMALE SALE

"One Step Shopping" seems to be the word of the day and here we have just that! You as a buyer will be able to select from some of the finest Black Angus Genetics available. Complement this with Red Angus Bulls and some great Charolais Bulls and foundation open heifers – and what more could you ask for.

Well a great location, with great hospitality and a product that will work for you. Repeat buyers are abundant at Windy Willows – a proven fact that folks are pleased with their product. Windy Willows Genetics allows you the buyer to invest with confidence and reap the benefits; whether in pounds of desirable steers or in great replacement females.

Collin and Michelle are constantly on the lookout for new herdsires, adding new bloodline to their reputation cows. Check out the offering this year with the powerful Sitz Upward sons. They are impressive and popular. Also check out the great Kodiak son out of the CAR Catherine 028 cow whose influence is nothing short of impressive.

The most uniform set of bulls to date – come and enjoy going through the pens sale day. The Red Bulls are also the stoutest, most uniform offered by Windy Willows.

If you pride yourself as no nonsense beef producers then the obvious source for your genetics should come from a No Nonsense Seedstock Producer – Windy Willows is just that! This family operation raises livestock as their main source of income; rest assured that most of the production kinks are removed.

If able to, please join us the evening before for their great steak hospitality then make sale day an event. If you are unable to attend or if you would like to visit about the offering, please do not hesitate to call any of the sales staff or OBI. We are certainly familiar with this leading program for Angus Seedstock.

Rob Holowaychuk, OBI

CARCASS DATA

In order to use body composition EPD's or ultrasound data to its full potential, a breeder must have an understanding of the ultrasound terminology. Several of the ultrasound measurements are comparable to the familiar carcass measurements. The data is simply collected on yearling bulls and heifers instead of market ready steers. Take a step back from looking at the numbers and become comfortable with the terminology.

ULTRASOUND CARCASS MEASUREMENTS

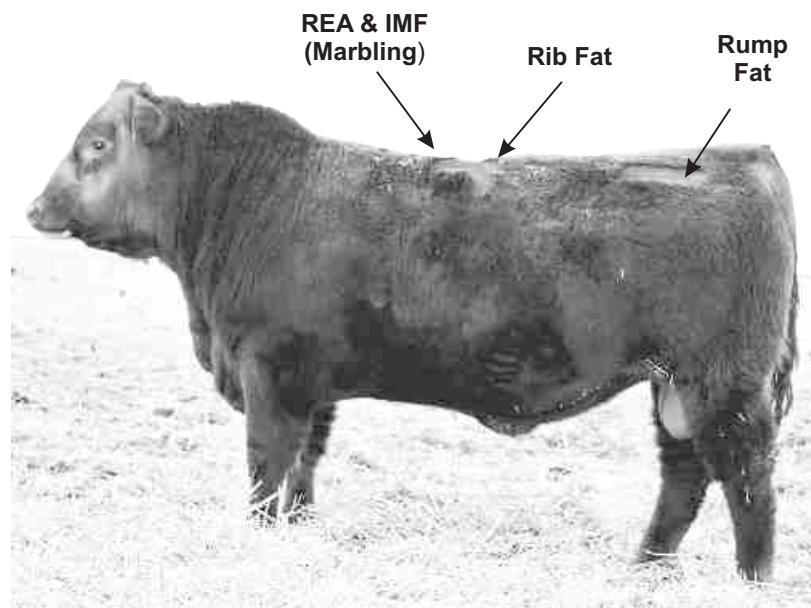
Rib Fat/Backfat: An external fat measurement taken between the 12th and 13th Reported in inches. Rib fat is the main trait that affects percent lean meat yield ie; A1, A2, A3, & A4. Percent lean meat yield is the calculation that estimates the percent of lean muscle on the carcass. For example, a lean meat yield of 60% on a 1000lb carcass would have 600lbs of lean muscle and 400lbs of bone and fat.

Ribeye Area (REA): An area measurement of the loin or ribeye muscle. Reported in square inches. While an increase in backfat will lower the percent lean meat yield an increase in REA will raise the percent lean meat yield.

Rump Fat: An external fat measurement taken from an image collected between the hooks and the pins of the animal. Reported in inches. The rump fat measurement, coupled with the rib fat measurement will increase the accuracy of percent lean meat yield.

Intramuscular Fat (%IMF)/ Marbling:

This measurement determines the amount of fat within the muscle. Reported in "%", it is used to determine the quality grade of the carcass. As %IMF increases so does juiciness, flavor, and tenderness, all factors affecting eating quality.



% IMF	(US) QUALITY GRADE (CAN)	
2.3 - 3.0	SELECT -	AA -
3.1 - 3.9	SELECT +	AA +
4.0 - 5.7	CHOICE -	AAA -
5.8 - 7.6	CHOICE 0	AAA 0
7.7 - 9.7	CHOICE +	AAA +
9.8 - 12.1	PRIME -	PRIME -
12.2 +	PRIME 0	PRIME 0

USING ULTRASOUND DATA TO SELECT BULLS

1. Fat levels, including marbling, will normally be higher in steers than in similarly fed bulls due to the lack of testosterone.
2. Carcass traits such as ribeye area (REA) and marbling (%IMF) are highly heritable, therefore using sires with high ultrasound scores for these traits will significantly improve carcass quality.
3. Significant premiums are being paid by packers for carcasses that meet high quality grade and yield grade standards. There are extra profits to be made!
4. Less backfat is not always better! Extremely low backfat bulls may sire steers with high yield grades, but they may be slow to finish. Their heifer counterparts may reach puberty later and have more difficulty milking, rebreeding and maintaining a short calving interval. On the other hand, overfat bulls may have reduced fertility.
5. Evaluate your cowherd, decide what kind of progeny you wish to produce and choose bulls with the ultrasound data to match your needs.

WHAT THE NUMBERS MEAN!

Windy Willows Farms have been performance testing our herd on the Canadian Angus Performance Program (CAP) since its inception.. We use the information within our own herd and we pride ourselves in providing useful performance information to you so that you can use it to help select the bull or bulls that best suit your operation. We do understand, however, that all these numbers can be mind boggling. This page will try to make some sense of the performance information that is provided in this catalog so that you may use it more effectively.

GROWTH TRAITS

Birth Weight (BW) – the actual weight of the calf taken within 24 hours of birth, not a guess and not a taped estimate.

Calving Ease (CE) – describes the type of birth. Codes used are: U – unassisted, E – easy pull, H – hard pull, M – malpresentation and S – surgical.

Age of Dam (AOD) – age of dam at time of calving. Two year olds, 3 year olds and very old cows tend to have lighter calves at birth.

Weaning Weight (WW) or **(Adjusted 205 Day Wt)** - the weight taken at weaning and adjusted to 205 days of age, also adjusted for the age of dam.

Weaning Index or Adjusted 205 Day Index – a means of comparing an individual bull's weaning weight to the average weaning weight of his group. Weaning weights and indexes are only comparable within the herd of origin, not between herds.

Yearling Weight (YW) – the weight taken at end of test and adjusted to 365 days of age.

Average Daily Gain (ADG) – the average daily gain while on 112 day gain test. The gain test begins after a 28 day adjustment period to allow bulls from the 4 different herds to adapt to a common environment at the feedlot.

ADG Index – a means of comparing an individual bull's ADG to the average of his group. It is expressed as a percentage of the group ADG.

Weight Per Day of Age (WPDA) – the weight of a bull at end of test divided by his age in days.

WPDA Index - a means of relating an individual bull's WPDA to the average of his group. It is expressed as a percentage of the group WPDA.

What is an EPD? (Expected Progeny Difference) – An EPD is a measure of differences in a trait that will be expected from progeny of different sires. EPDs are expressed in pounds plus (+) or minus (-) a zero standard.

Why are EPDs valuable as a selection tool? – EPDs can be used to compare bulls in different herds within the same breed. They are based on an individual's performance as well as that of his relatives and progeny. They factor out the management and environmental differences that may exist between herds.

Accuracy (Acc) – the more information that is used to calculate an EPD, the more reliable it is. Accuracies are expressed as a number between 0 and 1. The closer the accuracy is to 1, the greater the probability that the EPD will not change with the addition of more information.

BW EPD - the difference in birth weight you would expect between a bull's calves and calves from a bull with a BW EPD of 0. It is a much more accurate indication of expected progeny birth weight than the bull's own BW. All the Black bulls designated as Calving Ease in this catalog have BW EPDs of +3.0 or less. Black bulls designated as Calving Ease Elite have BW EPDs below +1.0.

WW EPD – the difference in weaning weight you would expect between a bull's calves and calves from a bull with a WW EPD of 0. Bulls with higher WW EPDs will sire heavier calves at weaning.

YW EPD – the difference in yearling weight you would expect between a bull's calves and calves from a bull with a YW EPD of 0. Bulls with higher YW EPDs will sire heavier calves at yearling age.

MILK EPD – the difference in weaning weight attributable to milking ability you would expect from a bull's daughters' progeny and progeny of daughters of a bull with a MILK EPD of 0. Bulls with higher MILK EPDs will sire daughters that will have heavier calves at weaning due to their milking ability.

Average EPD - It is helpful to know the average EPD for all calves born in 2011.

	BW	WW	YW	MILK
2011 Black average	+2.8	+42	+74	+17
2011 Red average	+0.5	+26	+50	+14

It is important to note that Black and Red EPDs cannot be directly compared.

Percentile – a ranking of a bull within the population by percentage. It is helpful to know where a bull ranks in the population for a particular trait.

BULL WARRANTY

We guarantee to provide you with a sound, fertile bull capable of servicing a reasonable number of cows. In the event that your bull is a non-satisfactory breeder the seller will not, under any circumstances, be responsible for more than the original selling price of any bull or female sold in the sale. The consignors will not provide replacement or credit for physical injury or mismanagement. Therefore we stress the importance of insurance on your bull. An insurance agent will be available on sale day.

WINDY WILLOWS RESERVES THE RIGHT TO DRAW SEMEN FOR IN-HERD USE ON ANY BULL IN THE SALE, AT THE BUYER'S CONVENIENCE AND OUR EXPENSE.

CALVING EASE & CALVING EASE ELITE BULLS

In response to our customers needs we have designated a group of bulls that we would recommend for heifers based primarily on their Birth Weight EPD. The Black bulls that have been designated Calving Ease (CE) have a BW EPD of +1.0 to +2.8 for this important trait. (Red bulls are 0 to +1.2.) The Black bulls designated as Calving Ease Elite (CEE) have a BW EPD of below +1.0 and are in the top 10% of the breed for low birth weight. (Red bulls are below 0.) Most of these bulls have been bred for calving ease and represent at least two generations of calving ease sires. These designations are guidelines and only you can decide which bulls are most appropriate for your situation.



SOUTH WEST ANIMAL HEALTH CENTRE LTD.

P.O. Box 1650, Swift Current, SK S9H 4G6 Canada
 Phone: (306) 773-4121 (24 Hours) Fax: (306) 773-1811
 Email: ahe@r2.net

Located on No. 1 Highway West of Swift Current

Windy Willows Angus has been a long time client of South West Animal Health Centre. The herd has been on a comprehensive health program for many years and follows the most up to date recommendations as to vaccination protocols.

The entire herd is on a modified live vaccination protocol which includes IBR, BVD Type I and II, PI3, and BRSV. The young calves receive at least 2 and most often 3 shots of this vaccine as well as 7 or 8 way clostridial and hemophilus by the time they are yearlings.

The purpose of such a vaccination program is to have and sell healthy cattle with a minimal risk of getting sick or transmitting disease. The protocol ensures No BVD carrier calves are born.

All cattle receive a pour on ivermectin in the fall. The calves are weaned in early October and are fed a balanced ration that allows them to grow at their genetic potential.

All bulls are semen evaluated and only satisfactory potential breeders sell in their sale with any non-testers supplying a freezer beef clientel.

Best of luck with your purchase.

Doug Mann, DVM

THE CANADIAN ELITE COW REPORT

The Canadian Elite Cow Report is an effort to identify superior cows in the Angus breed. Emphasis is placed on early puberty, breeding and early calving, followed by regularity of calving and above-average performance of the offspring. The Elite Cow Report requires a cow to have a minimum of four calves to determine her regularity of calving and ability to consistently produce calves with a superior weaning weight year after year.

We are proud of the number of Elite Cows we have in the Windy Willows herd. A total of 58 of our cows have been designated as Elite Cows and 23 of them are currently in our herd. Maternal ability has been a focus of our program for over 30 years. If you are interested in improving the maternal ability of your cowherd there is no better way than to use a son of a superior cow. We are offering 8 bulls in this sale who are direct sons of Elite dams. Seize the opportunity!

CAN'T MAKE IT TO THE SALE?

If you just can't make it to the sale because of weather, calving, prior commitments or whatever, please call us! Collin or any of the sale staff would be happy to discuss the offering with you. We encourage you to plan a trip to the farm to see the bulls and their dams, prior to the sale. We would welcome the opportunity to visit with you about which bulls will meet your needs. On sale day we can make arrangements to have you bid by phone or we would be pleased to personally represent you. We guarantee satisfaction! In the event that the bull purchased for you does not meet your expectations upon delivery, you do not own him!

WINDY WILLOWS FARMS

Collin Sauder & Michelle Potapinski

Box 55, Hodgeville, SK, S0H 2B0 • (306) 677-2507 • Cell: (306) 677-7544

Email: windy.willows@sasktel.net

Welcome to the 9th Annual Git 'R Done Bull and Female Sale

If you are in the beef business – hang on for the ride! In our lifetime, markets have never been this high and optimism has never been so strong! The best, however, is yet to come, so make sure you have the genetics that will allow you to take advantage of the brightest future our industry has ever seen. The time to invest in quality genetics is now!

Our bulls were weaned in early October without creep. After 130 days on feed the sale group gained an average of 3.59 lbs/day with an average WPDA of 3.12 lbs. They have access to a large pen for plenty of exercise and must move between feed and water daily. We do our best to develop these bulls in a manner which ensures their fitness and provides for a long breeding career.

We aim to provide our customers with the best service available and we stand behind our bulls 100%. If you should have a problem, we want to be the first to know so that we can deal with it.

This year we are offering 15 black purebred yearling heifers from the heart of our herd which we are confident will be assets to purebred or commercial herds alike. Be sure to check them out.

We are pleased and excited to have our neighbours, Cedarlea Farms, Garner & Lori Deobald and family join us this year with a strong set of yearling Charolais bulls. They share our commitment to the beef industry and to the success of their customers and are therefore a welcome addition to the Git 'R Done Bull Sale.

Please plan to join us on Tuesday, April 3. See you then!

Collin & Michelle

BLACK ANGUS BULLS

REFERENCE SIRE



SITZ UPWARD 307R

IMP 307R MARCH 12 2005 #1385926 AMF CAF NHF

BW: 85LBS. ADJ 205 DAY WT: 902LBS

ADJ 365 DAY WT: 1395LBS.

CONNEALY LEADTIME AMF CAF NHF

CONNEALY LEAD ON AMF CAF NHF

ELIGENCE PLUS OF CONANGA

S: CONNEALY ONWARD AMF CAF NHF

G A R TRAVELER 1489 AMF CAF

ALTUNE OF CONANGA 6104

AVALON 1418 OF CONANGA 6276

SITZ TRAVELER 6802

SITZ VALUE 7097 AMF CAF NHF

SITZ EISA EVERGREEN 791

D: SITZ HENRIETTA PRIDE 81M

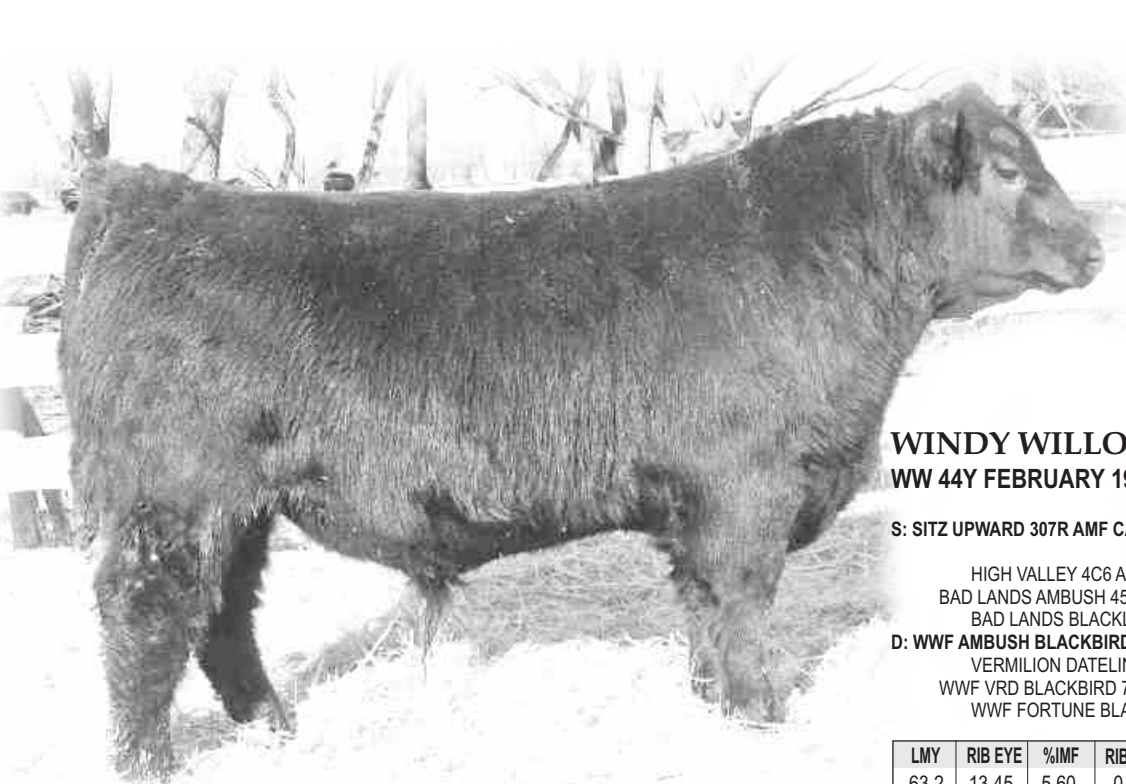
O C C GREAT PLAINS 943G AMF CAF NHF

SITZ HENRIETTA PRIDE 1370

SITZ HENRIETTA PRIDE 2155

BW	WW	YW	MILK	REA	%IMF	FAT
+2.4	+72	+137	+44	+0.65	+0.39	+0.003

Upward has quickly become one of the most popular bulls of the breed. He is unmatched for weaning and yearling growth with moderate birth weights. His daughter's milking ability and his carcass genetics are a bonus not usually found in a high growth bull. His calves at WWF, both bulls and heifers, exhibit his performance and eye appeal.



WINDY WILLOWS UPPER CUT 44Y

WW 44Y FEBRUARY 19 2011 #1631133

S: SITZ UPWARD 307R AMF CAF NHF

HIGH VALLEY 4C6 AMBUSH AMF
BAD LANDS AMBUSH 45M
BAD LANDS BLACKLASS 808H

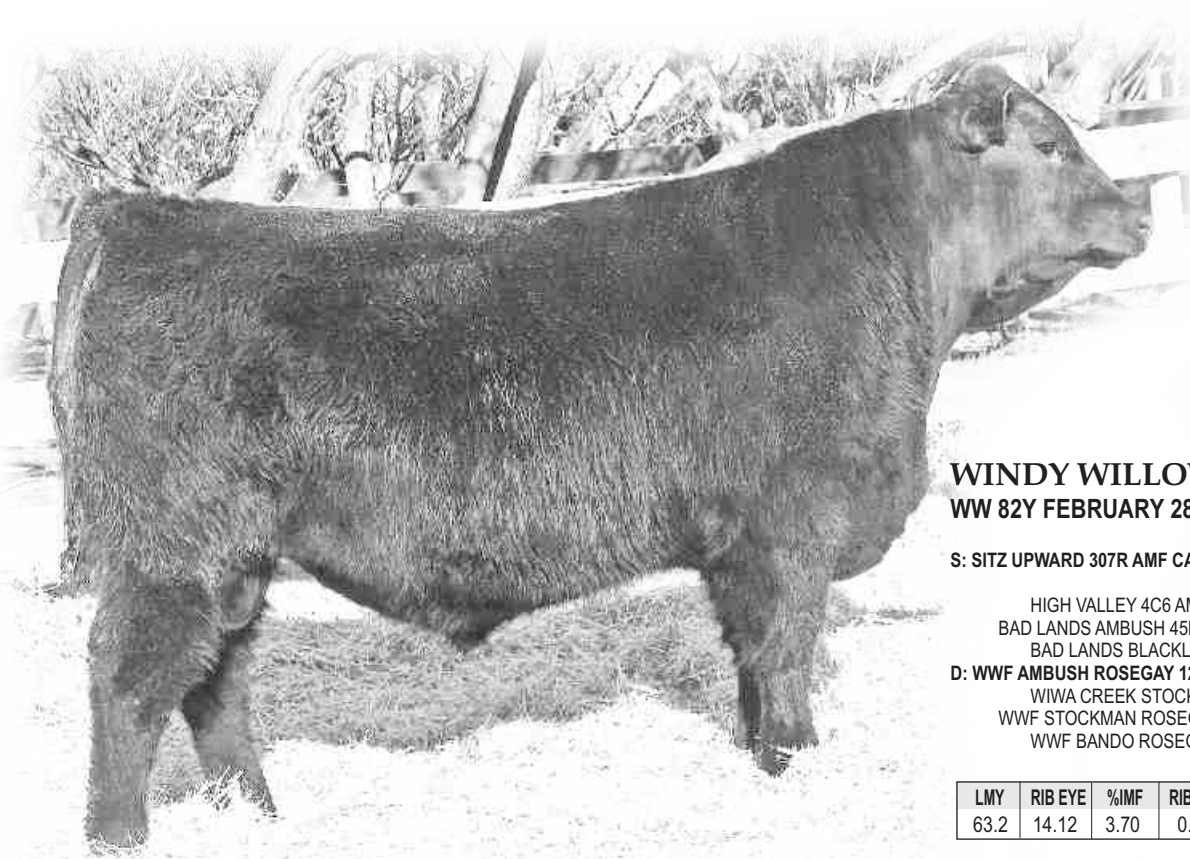
D: WWF AMBUSH BLACKBIRD 100R

VERMILION DATELINE 7078 AMF CAF NHF
WWF VRD BLACKBIRD 79N
WWF FORTUNE BLACKBIRD 63E

LMY	RIB EYE	%IMF	RIB FAT	RUMP FAT
63.2	13.45	5.60	0.25	0.23

	WTs	EPDs
BW	92	+3.6
WW	687	+64
YW	1305	+115
MILK	-	+34
AGE DAM	6	-
TEST ADG	3.86	-

FEATURE: Upper Cut has been a standout from the time he was a young calf. This is particularly remarkable since he lost his mother when he was 6 weeks old! He managed to survive on his own and that's an understatement! He was the heaviest calf we weaned last fall at 763lbs. You really have to appreciate his big, full hip, wide top and long, thick hair coat. What's under that hair coat is pretty impressive too. Upper Cut has the highest adjusted %IMF (marbling) in the entire offering at 5.60 for a ratio of 140. In addition, he ratioed 109 for adjusted REA at 13.45 sq inches. His mother was a beautiful Ambush daughter, long, smooth and thick with a perfect udder and small teats. Study this bull and his numbers. He is a herd bull for sure! **SELLING 2/3 INTEREST AND FULL POSSESSION**



WINDY WILLOWS UPWARD 82Y

WW 82Y FEBRUARY 28 2011 #1631160

S: SITZ UPWARD 307R AMF CAF NHF

HIGH VALLEY 4C6 AMBUSH AMF
BAD LANDS AMBUSH 45M
BAD LANDS BLACKLASS 808H

D: WWF AMBUSH ROSEGAY 122S

WIWA CREEK STOCKMAN 26'95
WWF STOCKMAN ROSEGAY 141L
WWF BANDO ROSEGAY 32G

LMY	RIB EYE	%IMF	RIB FAT	RUMP FAT
63.2	14.12	3.70	0.27	0.29

	WTs	EPDs
BW	88	+2.3
WW	695	+62
YW	1381	+111
MILK	-	+30
AGE DAM	5	-
TEST ADG	4.29	-
CALVING EASE		

FEATURE: Upward 82Y is the second highest gaining and second highest yearling weight bull in the sale. He has a big hip, is very long bodied and eye appealing. Does he have muscle? You bet! He has a 14.12 sq inch adjusted REA, second highest in the sale. He is a ¾ brother to Lot 1 with his Ambush dam having produced a feature bull to Tim Sawers in 2010 and another to Roh Bros in 2009.



WINDY WILLOWS UPTOWN 13Y - LOT 3

WINDY WILLOWS UPTOWN 13Y

WW 13Y FEBRUARY 10 2011 #1631113

S: SITZ UPWARD 307R AMF CAF NHF

GARDENS PRIME TIME AMF CAF NHF
CAR PRIME TIME 013
C A R MISS 871

D: WWF PRIME TIME MISSIE 75M
WIWA CREEK STOCKMAN 26'95
WWF STOCKMAN MISSIE 137K
CALLAMERE MISSIE 72G

LMY	RIB EYE	%IMF	RIB FAT	RUMP FAT
60.1	12.21	3.77	0.33	0.31

	WTs	EPDs
BW	90	+1.8
WW	556	+51
YW	1168	+105
MILK	+15	+28
AGE DAM	9	-
TEST ADG	3.83	-
CALVING EASE		

Missie 75M is an Elite Dam. She has been flushed and produced 3 Pioneer sons in last year's sale as well as the Heavy Metal bull a few years ago.

WINDY WILLOWS UPWARD 48Y

WW 48Y FEBRUARY 21 2011 #1631136

S: SITZ UPWARD 307R AMF CAF NHF

STEVENSON ROYCE 741C CAF NHF
STEVENSON BRUNO 561G CAF NHF
JRS ENCHANTRESS 16A

D: WWF BRUNO PRIDE 31M
WIWA CREEK STOCKMAN 32'95
THOMASON PRIDE 16J
WIWA CREEK PRIDE 12'92

LMY	RIB EYE	%IMF	RIB FAT	RUMP FAT
60.3	12.08	3.97	0.32	0.29

	WTs	EPDs
BW	90	+2.7
WW	595	+52
YW	1214	+97
MILK	-	+31
AGE DAM	9	-
TEST ADG	3.87	-
CALVING EASE		

Dam is one of our very productive Bruno daughters. Bruno did a super job for us.

WINDY WILLOWS UPWARD 56Y

WW 56Y FEBRUARY 22 2011 #1631141

S: SITZ UPWARD 307R AMF CAF NHF

RR HERO 6267
HERO 6267 OF R R 2418
R R EVERELDA ENTENSE 0413

D: WWF HERO BLACKBIRD 64R
WIWA CREEK STOCKMAN 26'95
WWF STOCKMAN BLACKBIRD 100H
WWF B SKY EBARD 28Y

LMY	RIB EYE	%IMF	RIB FAT	RUMP FAT
62.7	11.89	3.77	0.22	0.33

	WTs	EPDs
BW	92	+3.9
WW	570	+53
YW	1188	+100
MILK	-	+31
AGE DAM	6	-
TEST ADG	3.86	-

Hero daughters are renowned for being good mammas and 64R was no exception.



WINDY WILLOWS UPWARD 39Y

WW 39Y FEBRUARY 18 2011 #1631130

S: SITZ UPWARD 307R AMF CAF NHF

HOFF GALAXY S C 9147
HOFF TRADITION S C 456
HOFF MISS S C 1112

D: SOUTHERN ERELITE 43K
Q A S TRAVELER 23-4 AMF CAF NHF
SOUTHERN ERELITE 209E
SOUTHERN TALL ERELITE 87W

LMY	RIB EYE	%IMF	RIB FAT	RUMP FAT
62.9	12.73	4.66	0.24	0.27

	WTs	EPDs
BW	76	+0.5
WW	571	+53
YW	1112	+107
MILK	-	+28
AGE DAM	11	-
TEST ADG	3.38	-
CALVING EASE ELITE		

The lowest birth weight Upward calf born at WWF. Pretty good carcass too, ratioed 116 for %IMF.



WINDY WILLOWS UPWARD 48Y - LOT 5



WINDY WILLOWS UPWARD 56Y - LOT 6

WINDY WILLOWS UPWARD 60Y

WW 60Y FEBRUARY 23 2011 #1631143

S: SITZ UPWARD 307R AMF CAF NHF

PAPA EQUATOR 2928 AMF NHF
YOUNG DALE HERCULES 810H
YOUNG DALE GRACE 16C

D: WWF HERCULES BARBARA 152N

WIWA CREEK STOCKMAN 26'95

WWF STOCKMAN BARBARA 119H

WWF TT BARBARA 33F

LMY	RIB EYE	%IMF	RIB FAT	RUMP FAT
65.3	14.11	4.39	0.19	0.28

	WTs	EPDs
BW	94	+3.2
WW	604	+55
YW	1152	+109
MILK	-	+30
AGE DAM	8	-
TEST ADG	3.42	-

Here is another top notch carcass bull. He has a 14.11 adj REA, third highest in the sale, a 109 ratio for %IMF and the highest Lean Meat Yield (LMY) in the sale. His dam, Barbara 152N produced the high selling bull in the 2005 WWF Bull Sale.

7



WINDY WILLOWS UPWARD 60Y - LOT 7

WINDY WILLOWS UPWARD 75Y

WW 75Y FEBRUARY 27 2011 #1631155

S: SITZ UPWARD 307R AMF CAF NHF

C H QUANTUM 3330
BAD LANDS QUANTUM 016K
BAD LANDS ERICA 624F

D: WWF QUANTUM ERICA 163N

STEVENSON BRUNO 561G CAF NHF

WWF BRUNO ERICA 95L

WWF PUCKETT ERICA 70H

LMY	RIB EYE	%IMF	RIB FAT	RUMP FAT
63.4	12.78	3.85	0.22	0.30

	WTs	EPDs
BW	82	+0.3
WW	610	+51
YW	1252	+99
MILK	-	+30
AGE DAM	8	-
TEST ADG	4.02	-
CALVING EASE ELITE		

Upward 75Y is a powerful bull that gained over 4 lbs per day on feed. He will be easy to find. His mother, Erica 163N is a beautiful little cow with an excellent udder and lots of milk.

WINDY WILLOWS UPWARD 75Y - LOT 8

8

WINDY WILLOWS UPWARD 86Y

WW 86Y MARCH 01 2011 #1631164

S: SITZ UPWARD 307R AMF CAF NHF

LEACHMAN RIGHT TIME AMF
BAD LANDS RIGHT TIME 78N
BAD LANDS DUCHESS 809H

D: WWF RIGHT TIME ROSEGAY 120U

MINERTS FORTUNE 2000 AMF CAF NHF

WWF FORTUNE ROSEGAY 12J

WWF BANDO ROSEGAY 32G

LMY	RIB EYE	%IMF	RIB FAT	RUMP FAT
61.7	12.59	4.03	0.28	0.29

	WTs	EPDs
BW	80	+1.4
WW	611	+60
YW	1138	+110
MILK	-	+31
AGE DAM	3	-
TEST ADG	3.29	-
CALVING EASE		

Another good carcass bull by Upward. Upward's EPDs for REA and %IMF are well above average and these sons demonstrate that.

WINDY WILLOWS UPWARD 86Y - LOT 9

9

REFERENCE SIRE



S A V FINAL ANSWER 0035

IMP 035K FEBRUARY 22 2000 #1061938 AMF CAF NHF

BW: 69LBS. ADJ 205 DAY WT: 843LBS.

ADJ 365 DAY WT: LBS.

TRAVELER 1148 G D A R
G D A R TRAVELER 71 AMF CAF NHF
G D A R MISS BLACKCAP 567

S: SITZ TRAVELER 8180 AMF CAF NHF
G D A R RAINMAKER 340
SITZ EVERELDA ENTENSE 1137
SITZ EVERELDA ENTENSE 2335

TEHAMA BANDO 155 AMF CAF NHF
BON VIEW BANDO 598 AMF CAC
BON VIEW DORA 56

D: S A V EMULOUS 8145 CAF
ELLANIN SKY DIVER
S A V SKY EMULOUS 2124
TAIL N 0383

BW	WW	YW	MILK	REA	%IMF	FAT
-1.0	+61	+105	+24	+0.36	+0.43	+0.040

Final Answer is probably the most widely used calving ease bull in North America and with good reason. His calves are consistently low birth weight. We have used him on most of our heifers the last four years and their average birth weight is just over 70 pounds. Despite being so small at birth they really grow! You may be surprised by the performance these Final Answer sons have exhibited. While we recommend many of his sons for use on heifers, make no mistake, they are much more than calving ease bulls. His first daughters at WWF are now in production and the news gets even better!



10

WINDY WILLOWS FINAL ANSWER 18Y

WW 18Y FEBRUARY 14 2011 #1631116

S: S A V FINAL ANSWER 0035 AMF CAF NHF

CAR DUKE 104
S A V HERITAGE 6295 AMF CAF NHF
S A V BLACKCAP MAY 4136 CAF

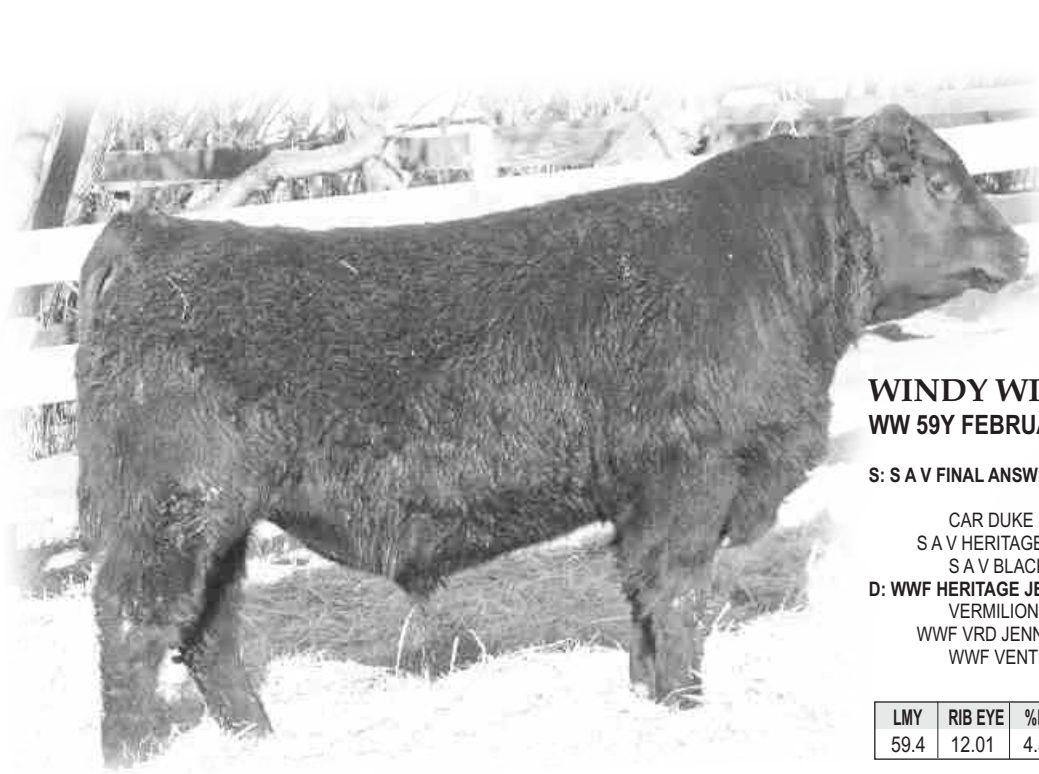
D: WWF HERITAGE MISS LARK 51W
SITZ ALLIANCE 6595 AMF NHF
WWF ALLIANCE MISS LARK 57N
FAIRMOUNT MISS LARK 5J

LMY	RIB EYE	%IMF	RIB FAT	RUMP FAT
61.9	12.87	5.36	0.28	0.42

	WTs	EPDs
BW	88	+2.6
WW	716	+66
YW	1391	+110
MILK	-	+27
AGE DAM	2	-
TEST ADG	4.22	-
CALVING EASE		

FEATURE: A high performance bull. He is the highest Adjusted Yearling Wt bull in the sale and the third highest gaining bull on test. His dam is a very good Heritage daughter that did a super job on her first calf with a 124 weaning index and ranking 3 out of 69 bulls. Carcass value is also strong with a %IMF ratio of 134, fourth highest out of 53 bulls and an REA index of 104. Much more than numbers, he looks like a herd bull. You will like him!

9TH ANNUAL GIT 'R DONE BULL & FEMALE SALE



FEATURE: Here's a $\frac{3}{4}$ brother to the previous lot and much like him in many ways. He weaned with a 121 index ranking 5 out of 69 bulls. His grand dam, 31N is an Elite cow and 75W may be on her way to achieving the same status. Excellent marbling!

WINDY WILLOWS FINAL ANSWER 59Y 11

WW 59Y FEBRUARY 23 2011 #1631142

S: S A V FINAL ANSWER 0035 AMF CAF NHF

CAR DUKE 104
S A V HERITAGE 6295 AMF CAF NHF
S A V BLACKCAP MAY 4136 CAF

D: WWF HERITAGE JENNIFER 75W
VERMILION DATELINE 7078 AMF CAF NHF
WWF VRD JENNIFER 31N
WWF VENTURE JENNIFER 34J

LMY	RIB EYE	%IMF	RIB FAT	RUMP FAT
59.4	12.01	4.50	0.35	0.35

	WTs	EPDs
BW	84	+2.8
WW	696	+68
YW	1303	+117
MILK	-	+26
AGE DAM	2	-
TEST ADG	3.79	-
CALVING EASE		



WINDY WILLOWS FINAL ANSWER 1Y - LOT 12

WINDY WILLOWS FINAL ANSWER 1Y 12

WW 1Y FEBRUARY 03 2011 #1644210

S: S A V FINAL ANSWER 0035 AMF CAF NHF

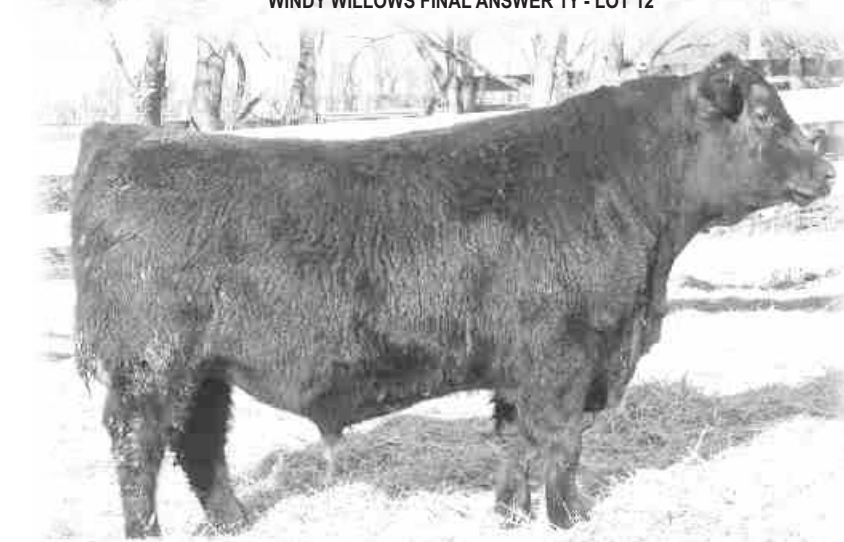
G A R GRID MAKER AMF CAF NHF
S A V BISMARCK 5682 AMF CAF NHF
S A V ABIGALE 0451

D: WWF BISMARCK BLACKBIRD 11W
BAD LANDS RIGHT TIME 78N
WWF RIGHT TIME BLACKBIRD 104T
WWF TRENDY BLACKBIRD 17H

LMY	RIB EYE	%IMF	RIB FAT	RUMP FAT
58.6	12.90	3.87	0.41	0.42

	WTs	EPDs
BW	72	-0.8
WW	647	+65
YW	1257	+106
MILK	-	+24
AGE DAM	2	-
TEST ADG	3.11	-
CALVING EASE ELITE		

The Final Answer - Bismarck combination works really well. The result here is an ultra thick and easy fleshing bull that will be a popular choice for breeding heifers.



WINDY WILLOWS FINAL ANSWER 7Y - LOT 13

WINDY WILLOWS FINAL ANSWER 7Y 13

WW 7Y FEBRUARY 08 2011 #1631109

S: S A V FINAL ANSWER 0035 AMF CAF NHF

CAR DUKE 104
S A V HERITAGE 6295 AMF CAF NHF
S A V BLACKCAP MAY 4136 CAF

D: WWF HERITAGE KEEPSAKE 49W
V F VENTURE FORWARD AMF CAF NHF
WWF VENTURE KEEPSAKE 17L
WWF FORTUNE KEEPSAKE 19J

LMY	RIB EYE	%IMF	RIB FAT	RUMP FAT
60.1	12.57	2.85	0.34	0.38

	WTs	EPDs
BW	68	-0.4
WW	630	+61
YW	1333	+107
MILK	-	+27
AGE DAM	2	-
TEST ADG	4.39	-
CALVING EASE ELITE		

Upward 7Y is another $\frac{3}{4}$ brother to Lots 10 and 11. This calf holds the distinction of being the fastest gaining bull on test this year. Check out his EPDs. How often do you see a bull with a minus BW EPD and a YW EPD greater than 100? Here is a true "spread" bull, low birth – high growth, a rare and valuable combination.

**WINDY WILLOWS
FINAL ANSWER 14Y
WW 14Y FEBRUARY 11 2011 #1644213**

S: S A V FINAL ANSWER 0035 AMF CAF NHF

SOUTHERN KRUGGERAND 16H
WINDY WILLOWS KRUGERRAND 1M
SOUTHERN PRIDE 45K

D: WWF KRUG ERICA 82W
SITZ ALLIANCE 6595 AMF NHF
WWF ALLIANCE ERICA 25P
WWF STOCKMAN ERICA 71H

LMY	RIB EYE	%IMF	RIB FAT	RUMP FAT
62.5	12.33	3.85	0.24	0.26

	WTs	EPDs
BW	74	+0.7
WW	618	+57
YW	1183	+96
MILK	-	+24
AGE DAM	2	-
TEST ADG	3.53	-
CALVING EASE ELITE		

Here is another really good Final Answer that would be a great choice for heifers. His dam is a deep bodied, good looking young cow.

WINDY WILLOWS FINAL ANSWER 14Y - LOT 14

**WINDY WILLOWS
FINAL ANSWER 17Y
WW 17Y FEBRUARY 12 2011 #1631115**

S: S A V FINAL ANSWER 0035 AMF CAF NHF

MINBURN MAIN EVENT 181N
MINBURN MAIN STREET 146S
MINBURN KEEPSAKE 16J

D: WWF MN STREET BRIDE 119W
SOUTHERN KRUGGERAND 16H
WWF KRUGERRAND BRIDE 126P
WWF FORTUNE BRIDE 22E

LMY	RIB EYE	%IMF	RIB FAT	RUMP FAT
60.1	11.93	3.54	0.32	0.33

	WTs	EPDs
BW	82	+2.0
WW	677	+56
YW	1341	+100
MILK	-	+26
AGE DAM	2	-
TEST ADG	4.15	-
CALVING EASE		

17Y and 19Y are very similar bulls as one might expect since they are 7/8 brothers with pedigrees that really represent the Windy Willows breeding program well.

WINDY WILLOWS FINAL ANSWER 17Y - LOT 15

**WINDY WILLOWS FINAL ANSWER 19Y 16
WW 19Y FEBRUARY 14 2011 #1644214**

S: S A V FINAL ANSWER 0035 AMF CAF NHF

MINBURN MAIN EVENT 181N
MINBURN MAIN STREET 146S
MINBURN KEEPSAKE 16J

D: WWF MN STREET BLACKBIRD 133W
SOUTHERN KRUGGERAND 16H
WWF KRUGERRAND BLACKBIRD 6P
WWF EXT BLACKBIRD 11G

LMY	RIB EYE	%IMF	RIB FAT	RUMP FAT
58.3	11.87	1.98	0.39	0.28

	WTs	EPDs
BW	82	+1.7
WW	709	+59
YW	1305	+106
MILK	-	+28
AGE DAM	2	-
TEST ADG	3.72	-
CALVING EASE		

Final Answer 19Y has a weaning index of 124, third highest out of 69 bulls. No surprise as both Final Answer and Main Street are performance leaders.

WINDY WILLOWS FINAL ANSWER 19Y - LOT 16

WINDY WILLOWS FINAL ANSWER 23Y 17

WW 23Y FEBRUARY 15 2011 #1631118

S: S A V FINAL ANSWER 0035 AMF CAF NHF

CRESCENT CREEK ALLIANCE 29N
CRESCENT CREEK IRON MAN 93R
CRESCENT CREEK DANA 35M

D: WWF IRON MAN ERICA 80W

E&B 1483 SCOTCHMAN 543
WWF SCOTCHMAN ERICA 90M
WWF PUCKETT ERICA 70H

LMY	RIB EYE	%IMF	RIB FAT	RUMP FAT
63.1	13.98	3.03	0.27	0.23

	WTs	EPDs
BW	96	+3.3
WW	743	+65
YW	1379	+102
MILK	-	+27
AGE DAM	2	-
TEST ADG	3.98	-

Final Answer 23Y was the second highest indexing bull at weaning, 128, with an adjusted weaning weight of 743 lbs. He is loaded with muscle as evidenced by the full hips, wide top and an ultrasound REA of 13.98 sq in, fourth out of 53 bulls. He darn sure looks like a bull should look!



WINDY WILLOWS FINAL ANSWER 23Y - LOT 17

WINDY WILLOWS FINAL ANSWER 24Y 18

WW 24Y FEBRUARY 15 2011 #1631119

S: S A V FINAL ANSWER 0035 AMF CAF NHF

MINBURN MAIN EVENT 181N
MINBURN MAIN STREET 146S
MINBURN KEEPSAKE 16J

D: WWF MN STREET LADY 170W

KBJ ROUND MR ANGUS 2P
KBJ ELOQUENT LADY 478H
KBJ ELOQUENT LADY 394F

LMY	RIB EYE	%IMF	RIB FAT	RUMP FAT
61.5	11.39	2.86	0.25	0.30

	WTs	EPDs
BW	72	+0.6
WW	642	+53
YW	1178	+92
MILK	-	+25
AGE DAM	2	-
TEST ADG	3.35	-

CALVING EASE ELITE

This Final Answer sire group will certainly impress!

WINDY WILLOWS FINAL ANSWER 36Y 20

WW 36Y FEBRUARY 18 2011 #1631127

S: S A V FINAL ANSWER 0035 AMF CAF NHF

SOUTHERN KRUGGERAND 16H
WINDY WILLOWS KRUGGERAND 1M
SOUTHERN PRIDE 45K

D: WWF KRUG JENNIFER 113W

BAD LANDS QUANTUM 016K
WWF QUANTUM JENNIFER 102N
WWF STOCKMAN JENNIFER 139K

LMY	RIB EYE	%IMF	RIB FAT	RUMP FAT
64.1	12.93	2.05	0.20	0.27

	WTs	EPDs
BW	90	+2.7
WW	662	+58
YW	1241	+98
MILK	-	+22
AGE DAM	2	-
TEST ADG	3.62	-

CALVING EASE

The Kruggerand 1M daughters are big, soggy cows with loads of capacity, a lot like the bull himself. 113W did a great job on her Final Answer son. Impressive Lean Meat Yield (LMY) of 64.1%



WINDY WILLOWS FINAL ANSWER 36Y - LOT 20

WINDY WILLOWS FINAL ANSWER 25Y 19

WW 25Y FEBRUARY 15 2011 #1631120

S: S A V FINAL ANSWER 0035 AMF CAF NHF

G A R GRID MAKER AMF CAF NHF
S A V BISMARCK 5682 AMF CAF NHF
S A V ABIGALE 0451

D: WWF BISMARCK BELL 78W

CRESCENT CREEK IRON MAN 93R
WWF IRON BELL 181T
SPRING VIEW BELL 9M

LMY	RIB EYE	%IMF	RIB FAT	RUMP FAT
61.2	12.98	3.91	0.31	0.22

	WTs	EPDs
BW	78	-0.2
WW	685	+62
YW	1282	+103
MILK	-	+25
AGE DAM	2	-
TEST ADG	3.73	-

CALVING EASE ELITE

25Y is another Final Answer – Bismarck combination that almost guarantees low birth weights and rapid growth.



WINDY WILLOWS FINAL ANSWER 25Y - LOT 19

